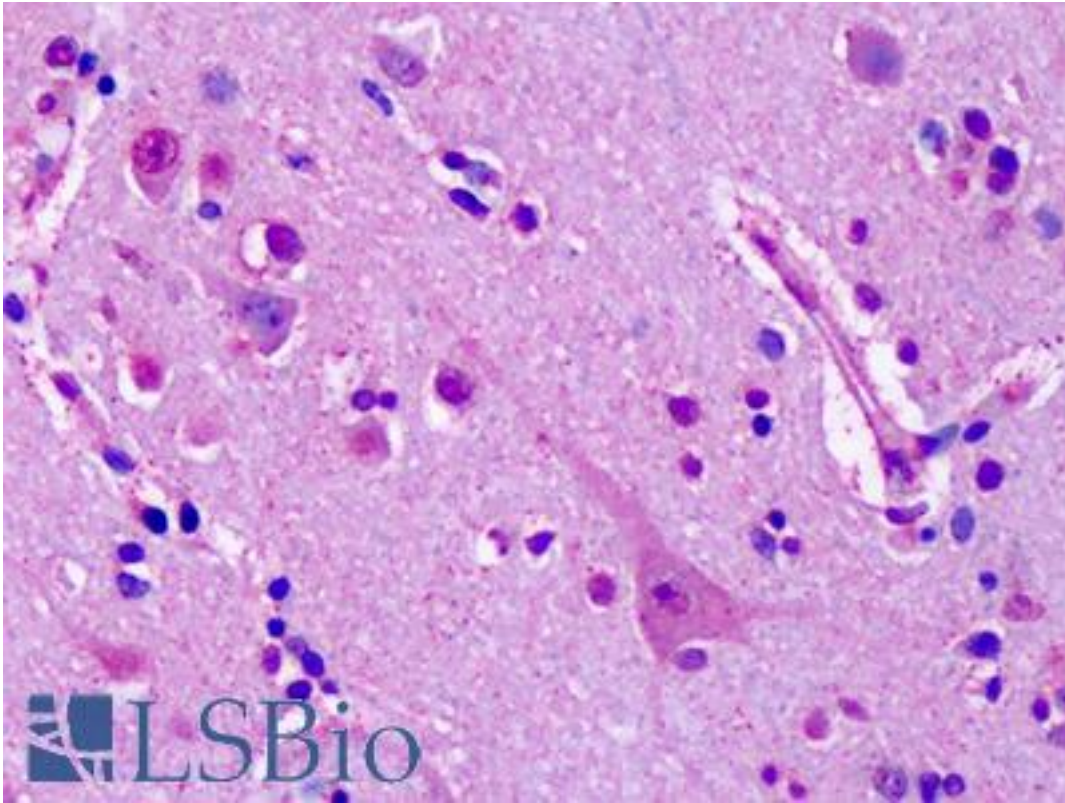


GRM7 / MGLUR7 Rabbit anti-Human Polyclonal (Extracellular Domain) Antibody - LS-A2694 - LSBio

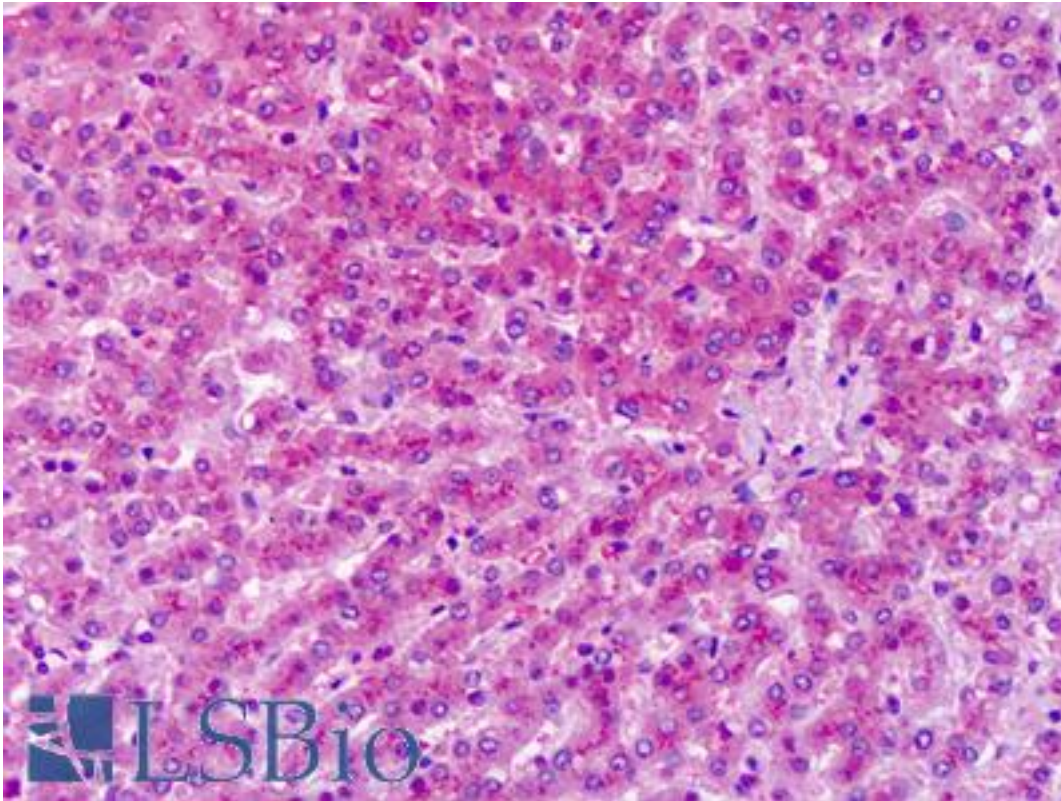
<b>CatalogID:</b>	LS-A2694
<b>Target:</b>	glutamate receptor, metabotropic 7 (GRM7)
<b>Synonyms:</b>	GRM7 Antibody, GLUR7 Antibody, MGLU7 Antibody, MGLUR7 Antibody, GPRC1G Antibody
<b>Family / Subfamily:</b>	GPCR / Metabotropic glutamate
<b>Host</b>	GRM7 antibody was produced in Rabbit
<b>Clonality:</b>	Polyclonal
<b>Immunogen Species:</b>	GRM7 / MGLUR7 antibody was raised against Human
<b>Antigen Type:</b>	Synthetic peptide
<b>Immunogen:</b>	GRM7 / MGLUR7 antibody was raised against synthetic 15 amino acid peptide from 2nd extracellular domain of human GRM7 / MGLUR7. Percent identity with other species by BLAST analysis: Human, Chimpanzee, Gorilla, Orangutan, Gibbon, Monkey, Marmoset, Mouse, Rat, Dolphin, Elephant, Panda, Bovine, Dog, Horse, Rabbit, Pig (100%); Opossum, Turkey, Chicken (93%).
<b>Specificity:</b>	Human GRM7 / MGLUR7. BLAST analysis of the peptide immunogen showed no homology with other human proteins, except GRM8 (67%).
<b>Epitope:</b>	Extracellular Domain
<b>Reactivity:</b>	Human, Chimpanzee, Gorilla, Orangutan, Gibbon, Monkey, Mouse, Rat, Bovine, Dog, Horse, Pig, Rabbit
<b>Predicted Reactivity:</b>	Chicken
<b>Purification:</b>	Immunoaffinity purified
<b>Presentation:</b>	PBS, 0.1% sodium azide.
<b>Recommended Storage:</b>	Long term: -70°C; Short term: +4°C
<b>Uses:</b>	IHC - Paraffin (10 µg/ml) (Optimal dilution to be determined by the researcher)
<b>Size:</b>	50 µg
<b>Concentration:</b>	1 mg/ml

**Immunohistochemistry Image:**



Anti-GRM7 / MGLUR7 antibody IHC of human brain, cortex, neurons. Immunohistochemistry of formalin-fixed, paraffin-embedded tissue after heat-induced antigen retrieval. Antibody LS-A2694 dilution 10 ug/ml.

**Immunohistochemistry Image:**



Anti-GRM7 / MGLUR7 antibody IHC of human liver. Immunohistochemistry of formalin-fixed, paraffin-embedded tissue after heat-induced antigen retrieval. Antibody LS-A2694 dilution 10 ug/ml.

**Requested From:**

Japan

Laboratory Reagent For In Vitro Research Use Only

Not for resale without prior written consent from LifeSpan BioSciences, Inc.

Created on 9/23/2014

© 2014 LifeSpan BioSciences