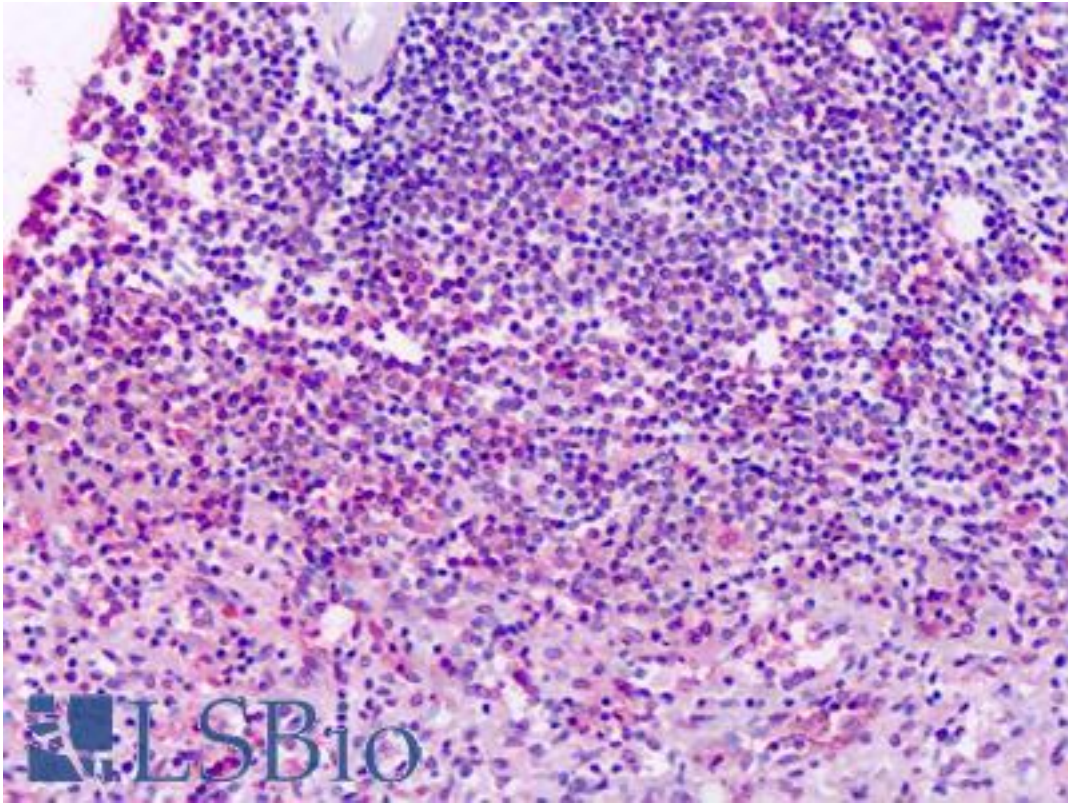


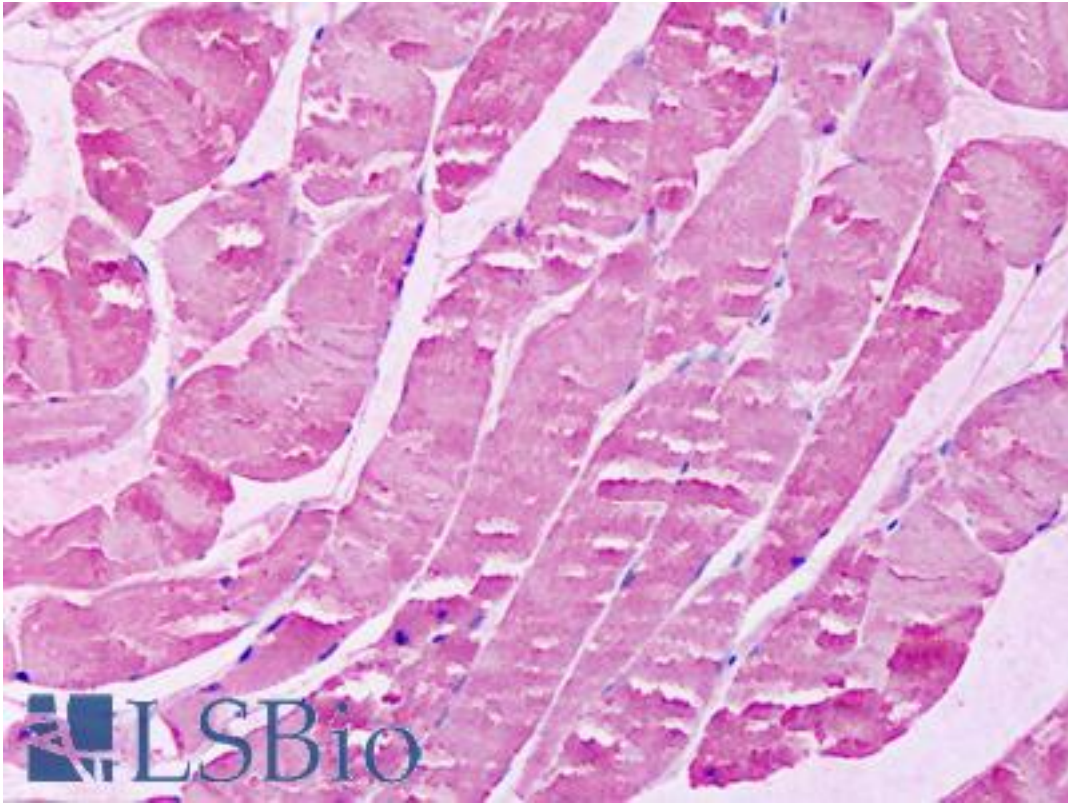
XPR1 Rabbit anti-Human Polyclonal (N-Terminus) Antibody - LS-A2674 - LSBio	
CatalogID:	LS-A2674
Target:	xenotropic and polytropic retrovirus receptor 1 (XPR1)
Synonyms:	XPR1 Antibody, XR Antibody, SYG1 Antibody, X3 Antibody, Protein SYG1 homolog Antibody, X-receptor Antibody
Family / Subfamily:	GPCR / Orphan-U
Host	XPR1 antibody was produced in Rabbit
Clonality:	Polyclonal
Immunogen Species:	XPR1 antibody was raised against Human
Antigen Type:	Synthetic peptide
Immunogen:	XPR1 antibody was raised against synthetic 16 amino acid peptide from N-terminal extracellular domain of human XPR1. Percent identity with other species by BLAST analysis: Human, Orangutan, Gibbon, Monkey, Marmoset, Mouse, Rat, Hamster, Elephant, Panda, Bat, Dog, Bovine, Cat, Horse, Rabbit, Pig, Opossum, Turkey, Chicken, Armadillo, Platypus, Lizard (100%); Xenopus, Stickleback, Zebrafish, Blood fluke, Mosquito, Beetle, Tick (94%); Pufferfish, Drosophila, Ant (88%).
Specificity:	Human XPR1. BLAST analysis of the peptide immunogen showed no homology with other human proteins.
Epitope:	N-Terminus
Reactivity:	Human, Orangutan, Gibbon, Monkey, Mouse, Rat, Bat, Bovine, Dog, Hamster, Horse, Pig, Rabbit, Chicken
Predicted Reactivity:	Xenopus, Zebrafish, Insect
Purification:	Immunoaffinity purified
Presentation:	PBS, 0.1% sodium azide.
Recommended Storage:	Long term: -70°C; Short term: +4°C
Uses:	IHC - Paraffin (8 µg/ml), ICC (8 - 15 µg/ml) (Optimal dilution to be determined by the researcher)
Size:	50 µg
Concentration:	1 mg/ml

Immunohistochemistry Image:

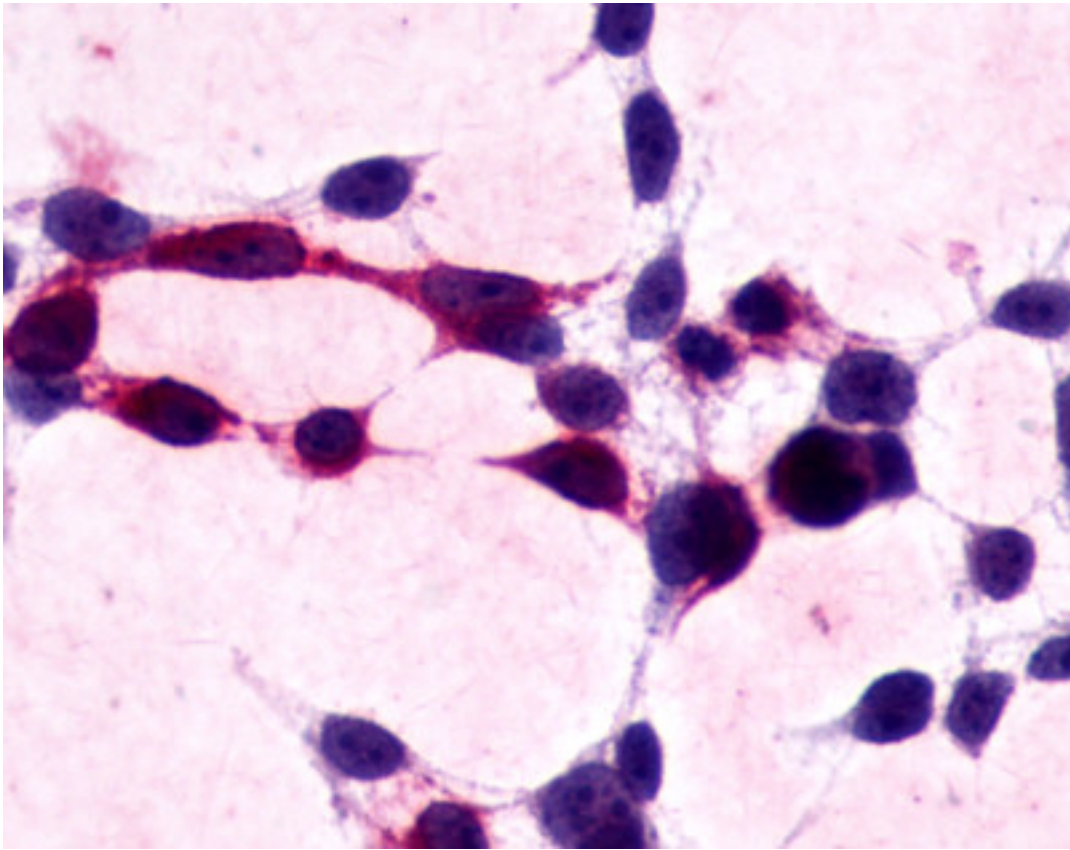


Anti-XPR1 antibody IHC of human spleen. Immunohistochemistry of formalin-fixed, paraffin-embedded tissue after heat-induced antigen retrieval. Antibody LS-A2674 dilution 8 ug/ml.

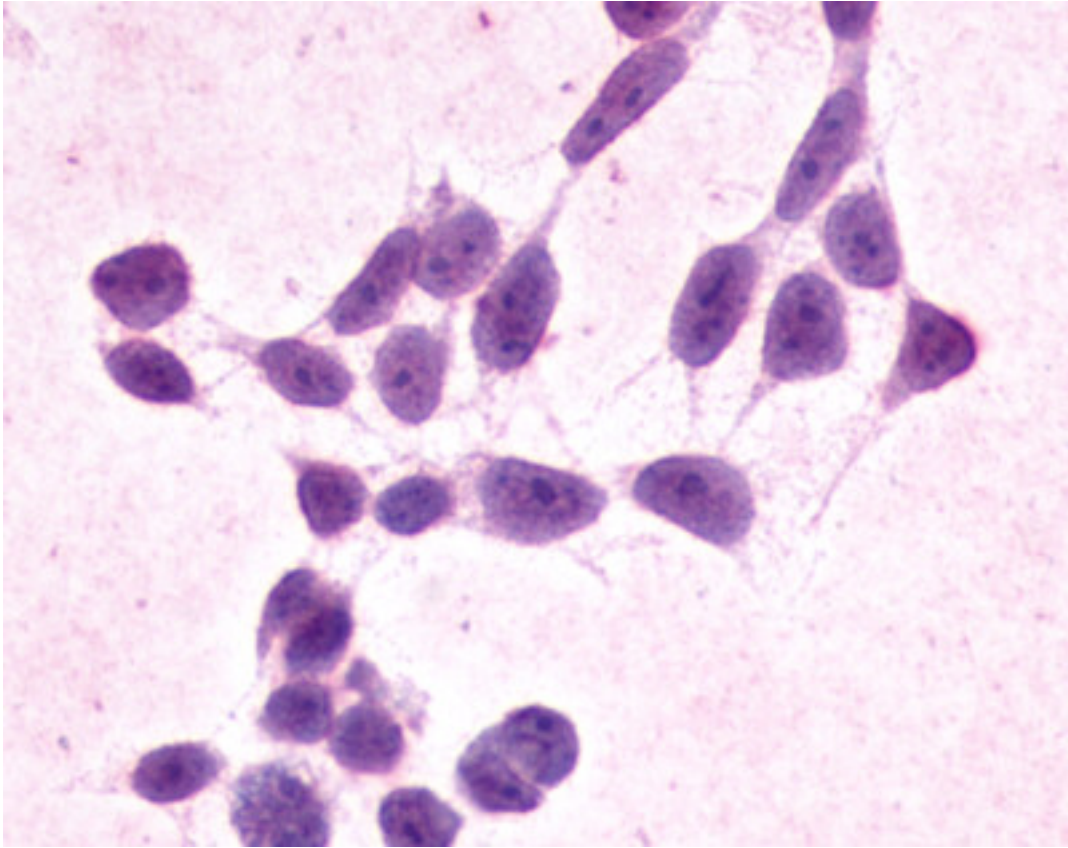
Immunohistochemistry Image:



Anti-XPR1 antibody IHC of human skeletal muscle. Immunohistochemistry of formalin-fixed, paraffin-embedded tissue after heat-induced antigen retrieval. Antibody LS-A2674 dilution 8 ug/ml.



Cells expressing vector only - immunostained with target antibody



Cells expressing vector only - immunostained with target antibody

Requested From:

Japan

Laboratory Reagent For In Vitro Research Use Only

Not for resale without prior written consent from LifeSpan BioSciences, Inc.

Created on 9/23/2014

© 2014 LifeSpan BioSciences