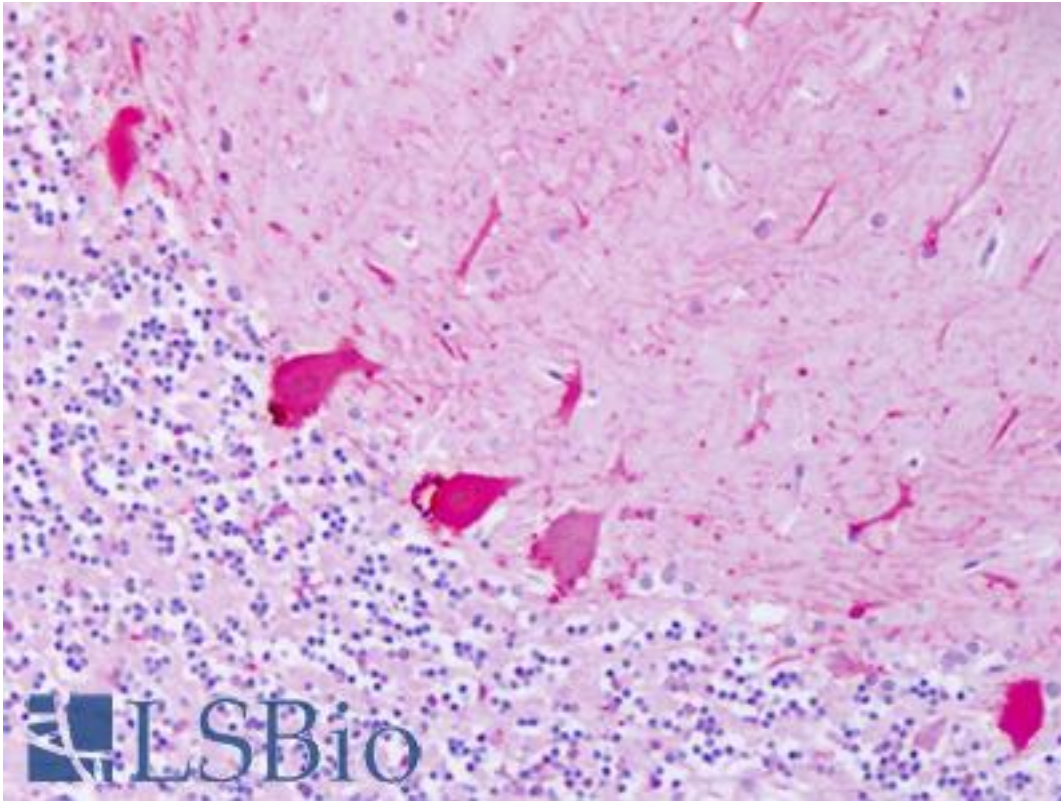


ADRB2 Rabbit anti-Human Polyclonal (N-Terminus) Antibody - LS-A2662 - LSBio	
CatalogID:	LS-A2662
Target:	adrenoceptor beta 2, surface (ADRB2)
Synonyms:	ADRB2 Antibody, ADRB2R Antibody, Adrenoceptor beta 2, surface Antibody, ADRBR Antibody, B2AR Antibody, Beta-2 adrenoceptor Antibody, Beta-2 adrenergic receptor Antibody, Beta-2 adrenoreceptor Antibody, BETA2AR Antibody, BAR Antibody, Adrenergic beta-2 receptor Antibody, Catecholamine receptor Antibody
Family / Subfamily:	GPCR / Adrenergic
Host	ADRB2 antibody was produced in Rabbit
Clonality:	Polyclonal
Immunogen Species:	ADRB2 antibody was raised against Human
Antigen Type:	Synthetic peptide
Immunogen:	ADRB2 antibody was raised against synthetic 16 amino acid peptide from N-terminal extracellular domain of human ADRB2. Percent identity with other species by BLAST analysis: Human, Chimpanzee, Gorilla, Monkey, Marmoset (88%); Mouse (81%).
Specificity:	Human ADRB2. BLAST analysis of the peptide immunogen showed no homology with other human proteins.
Epitope:	N-Terminus
Reactivity:	Human
Purification:	Immunoaffinity purified
Presentation:	PBS, 0.1% sodium azide.
Recommended Storage:	Long term: -70°C; Short term: +4°C
Uses:	IHC - Paraffin (2.8 - 4.6 µg/ml) (Optimal dilution to be determined by the researcher)
Size:	50 µg
Concentration:	1 mg/ml

Immunohistochemistry Image:



Anti-ADRB2 antibody IHC of human brain, cerebellum. Immunohistochemistry of formalin-fixed, paraffin-embedded tissue after heat-induced antigen retrieval. Antibody LS-A2662 dilution 2.8-4.6 ug/ml.

Requested From:

Japan

Laboratory Reagent For In Vitro Research Use Only

Not for resale without prior written consent from LifeSpan BioSciences, Inc.

Created on 9/23/2014

© 2014 LifeSpan BioSciences