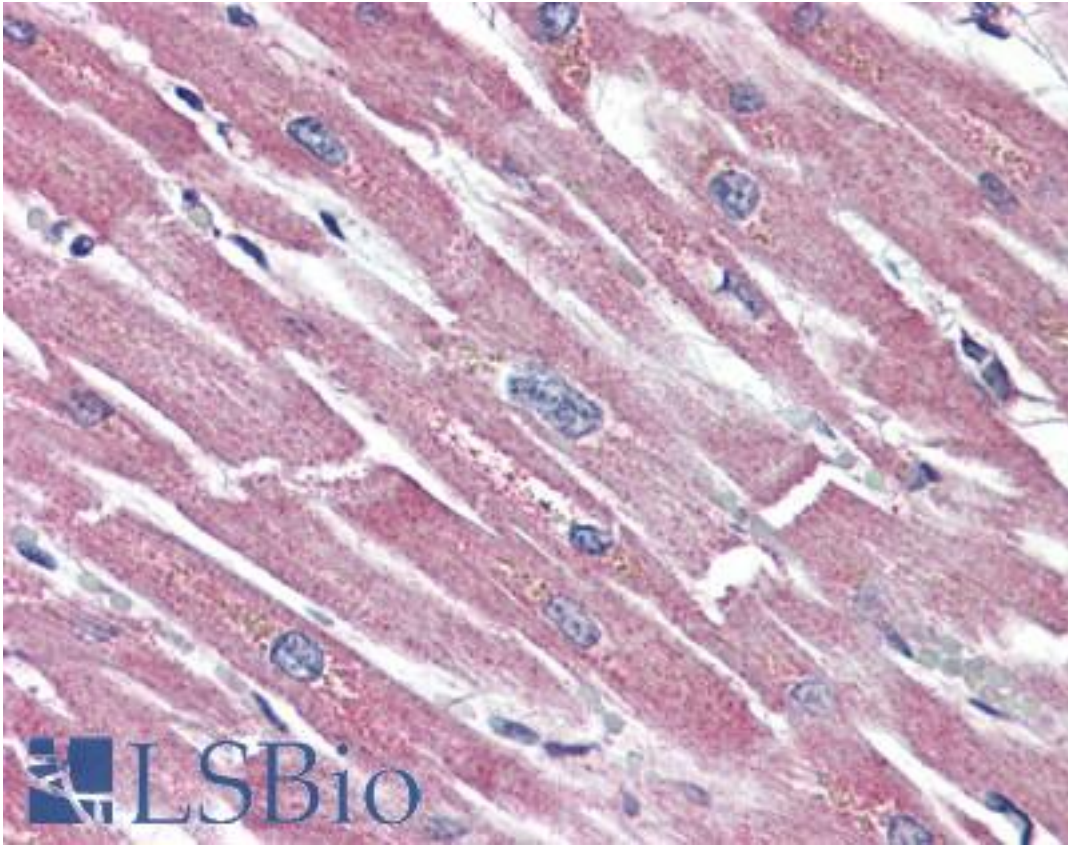


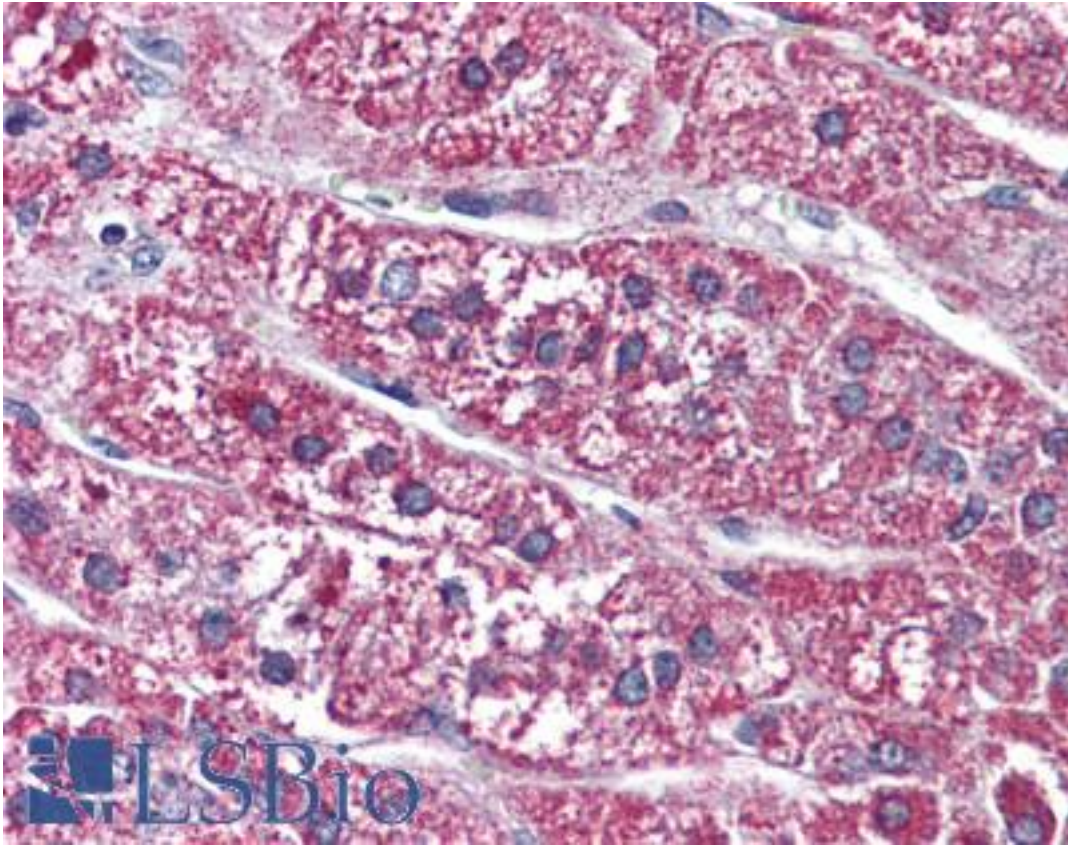
SSTR5 Rabbit anti-Human Polyclonal (Extracellular Domain) Antibody - LS-A2637 - LSBio	
CatalogID:	LS-A2637
Target:	somatostatin receptor 5 (SSTR5)
Synonyms:	SSTR5 Antibody, Somatostatin receptor 5 Antibody, SS5-R Antibody, SS5R Antibody, Somatostatin receptor type 5 Antibody, Sst5 Antibody, SS-5-R Antibody
Family / Subfamily:	GPCR / Somatostatin
Host	SSTR5 antibody was produced in Rabbit
Clonality:	Polyclonal
Immunogen Species:	SSTR5 antibody was raised against Human
Antigen Type:	Synthetic peptide
Immunogen:	SSTR5 antibody was raised against synthetic 16 amino acid peptide from 2nd extracellular domain of human SSTR5. Percent identity with other species by BLAST analysis: Human, Gorilla (100%); Marmoset (88%).
Specificity:	Human SSTR5. BLAST analysis of the peptide immunogen showed no homology with other human proteins.
Epitope:	Extracellular Domain
Reactivity:	Human, Gorilla
Purification:	Immunoaffinity purified
Presentation:	PBS, 0.1% sodium azide.
Recommended Storage:	Long term: -70°C; Short term: +4°C
Usage Summary:	Antigen retrieval requires Proteinase K treatment.
Uses:	IHC - Paraffin (10 µg/ml) (Optimal dilution to be determined by the researcher)
Size:	50 µg
Concentration:	1 mg/ml

Immunohistochemistry Image:



Anti-SSTR5 antibody LS-A2637 IHC of human heart. Immunohistochemistry of formalin-fixed, paraffin-embedded tissue after heat-induced antigen retrieval.

Immunohistochemistry Image:



Anti-SSTR5 antibody LS-A2637 IHC of human adrenal. Immunohistochemistry of formalin-fixed, paraffin-embedded tissue after heat-induced antigen retrieval.

Requested From:

Japan

Laboratory Reagent For In Vitro Research Use Only

Not for resale without prior written consent from LifeSpan BioSciences, Inc.

Created on 9/23/2014

© 2014 LifeSpan BioSciences