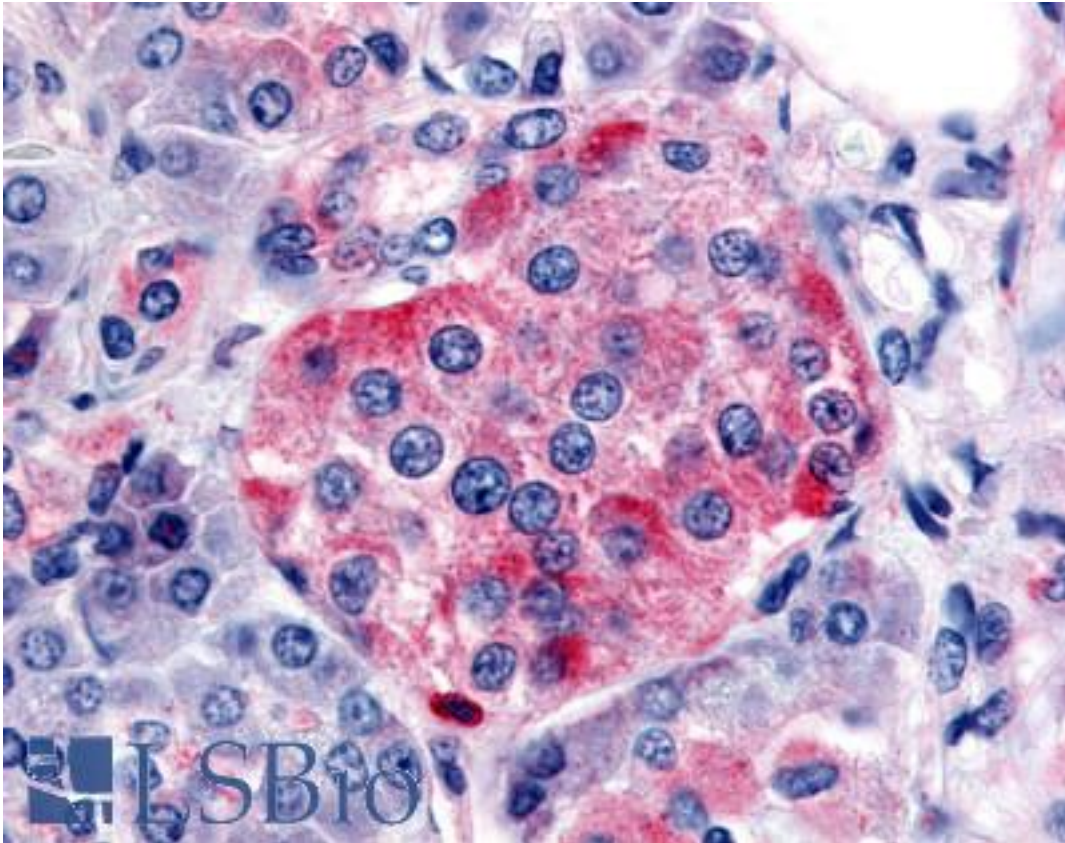


**SSTR1 Rabbit anti-Human Polyclonal (C-Terminus) Antibody - LS-A2618 - LSBio**

<b>CatalogID:</b>	LS-A2618
<b>Target:</b>	somatostatin receptor 1 (SSTR1)
<b>Synonyms:</b>	SSTR1 Antibody, Somatostatin receptor type 1 Antibody, SS1-R Antibody, SS1R Antibody, Somatostatin receptor 1 Antibody, SRIF-2 Antibody, Sst1 receptor Antibody, SS-1-R Antibody, Sst1 Antibody
<b>Family / Subfamily:</b>	GPCR / Somatostatin
<b>Host</b>	SSTR1 antibody was produced in Rabbit
<b>Clonality:</b>	Polyclonal
<b>Immunogen Species:</b>	SSTR1 antibody was raised against Human
<b>Antigen Type:</b>	Synthetic peptide
<b>Immunogen:</b>	SSTR1 antibody was raised against synthetic 15 amino acid peptide from C-terminus of human SSTR1. Percent identity with other species by BLAST analysis: Human, Monkey, Mouse, Rat, Sheep, Bovine, Bat, Dog, Goat, Hamster, Elephant, Panda, Horse, Rabbit, Pig (100%); Turkey, Chicken (87%); Zebrafish (80%).
<b>Specificity:</b>	Human SSTR1. BLAST analysis of the peptide immunogen showed no homology with other human proteins.
<b>Epitope:</b>	C-Terminus
<b>Reactivity:</b>	Human, Monkey, Mouse, Rat, Bat, Bovine, Dog, Goat, Hamster, Horse, Pig, Rabbit, Sheep
<b>Purification:</b>	Immunoaffinity purified
<b>Presentation:</b>	PBS, 0.1% sodium azide.
<b>Recommended Storage:</b>	Long term: -70°C; Short term: +4°C
<b>Uses:</b>	IHC - Paraffin (10 µg/ml) (Optimal dilution to be determined by the researcher)
<b>Size:</b>	50 µg
<b>Concentration:</b>	1 mg/ml

**Immunohistochemistry Image:**



Anti-SSTR1 antibody LS-A2618 IHC of human pancreas, islet. Immunohistochemistry of formalin-fixed, paraffin-embedded tissue after heat-induced antigen retrieval.

**Requested From:**

Japan

Laboratory Reagent For In Vitro Research Use Only

Not for resale without prior written consent from LifeSpan BioSciences, Inc.

Created on 9/23/2014

© 2014 LifeSpan BioSciences