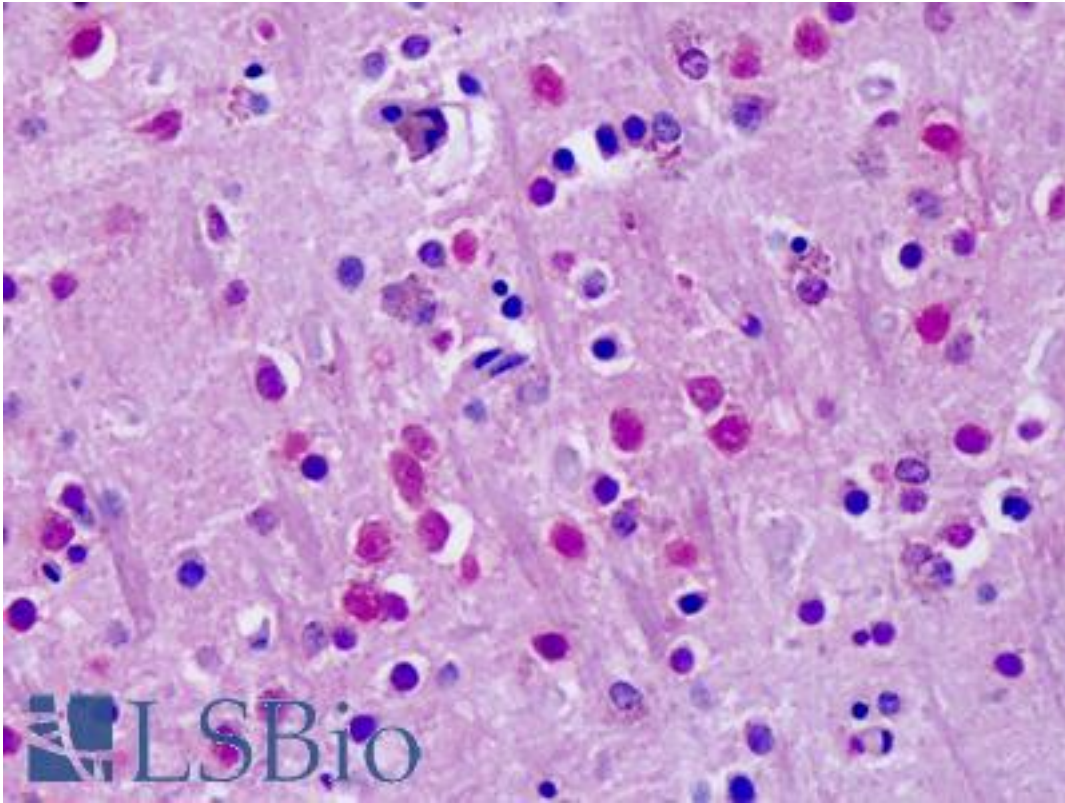


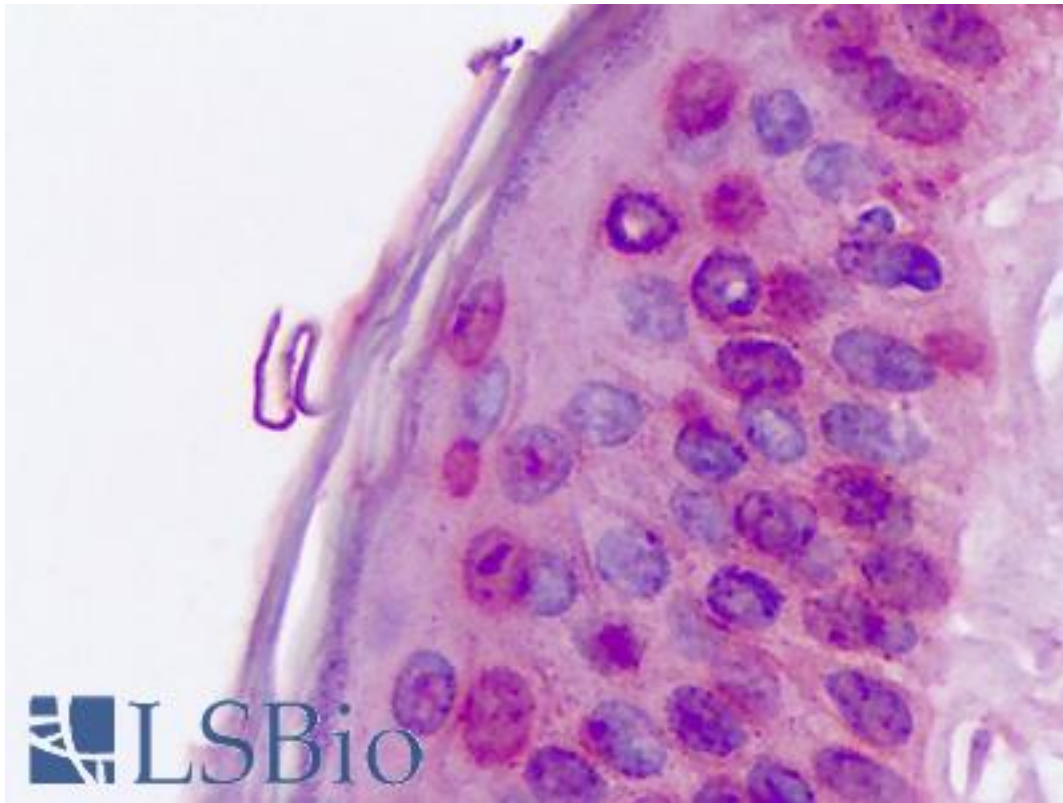
RORA / ROR Alpha Rabbit anti-Human Polyclonal (Hinge Domain) Antibody - LS-A2337 - LSBio	
<b>CatalogID:</b>	LS-A2337
<b>Target:</b>	RAR-related orphan receptor A (RORA)
<b>Synonyms:</b>	RORA Antibody, Nuclear receptor ROR-alpha Antibody, Nuclear receptor RZR-alpha Antibody, Roralpha Antibody, Transcription factor RZR-alpha Antibody, RAR-related orphan receptor A Antibody, ROR-alpha Antibody, ROR3 Antibody, RZRA Antibody, NR1F1 Antibody, ROR Alpha Antibody, RZR-ALPHA Antibody
<b>Family / Subfamily:</b>	NHR / NR1 Thyroid hormone-like
<b>Host</b>	RORA antibody was produced in Rabbit
<b>Clonality:</b>	Polyclonal
<b>Immunogen Species:</b>	RORA / ROR Alpha antibody was raised against Human
<b>Antigen Type:</b>	Synthetic peptide
<b>Immunogen:</b>	RORA / ROR Alpha antibody was raised against synthetic 20 amino acid peptide from hinge domain of human ROR Alpha. Percent identity with other species by BLAST analysis: Human, Gorilla, Gibbon, Monkey, Marmoset, Mouse, Rat, Bovine, Dog, Bat, Hamster, Elephant, Panda, Horse, Rabbit, Pig (100%); Opossum, Turkey, Chicken, Platypus, Xenopus, Pufferfish, Zebrafish, Stickleback (95%).
<b>Specificity:</b>	Human ROR Alpha. BLAST analysis of the peptide immunogen showed no homology with other human proteins, except RORB (65%).
<b>Epitope:</b>	Hinge Domain
<b>Reactivity:</b>	Human, Gorilla, Gibbon, Monkey, Mouse, Rat, Bat, Bovine, Dog, Hamster, Horse, Pig, Rabbit
<b>Predicted Reactivity:</b>	Chicken, Xenopus, Zebrafish
<b>Purification:</b>	Immunoaffinity purified
<b>Presentation:</b>	PBS, 0.1% sodium azide.
<b>Recommended Storage:</b>	Long term: -70°C; Short term: +4°C
<b>Uses:</b>	IHC - Paraffin (11 - 17 µg/ml) (Optimal dilution to be determined by the researcher)
<b>Size:</b>	50 µg
<b>Concentration:</b>	1 mg/ml

**Immunohistochemistry Image:**



Anti-ROR Alpha / RORA antibody IHC of human brain, cortex. Immunohistochemistry of formalin-fixed, paraffin-embedded tissue after heat-induced antigen retrieval. Antibody LS-A2337 dilution 11-17 ug/ml.

**Immunohistochemistry Image:**



Anti-ROR Alpha / RORA antibody IHC of human skin. Immunohistochemistry of formalin-fixed, paraffin-embedded tissue after heat-induced antigen retrieval. Antibody LS-A2337 dilution 11-17 ug/ml.

**Requested From:**

Japan

Laboratory Reagent For In Vitro Research Use Only

Not for resale without prior written consent from LifeSpan BioSciences, Inc.

Created on 9/23/2014

© 2014 LifeSpan BioSciences