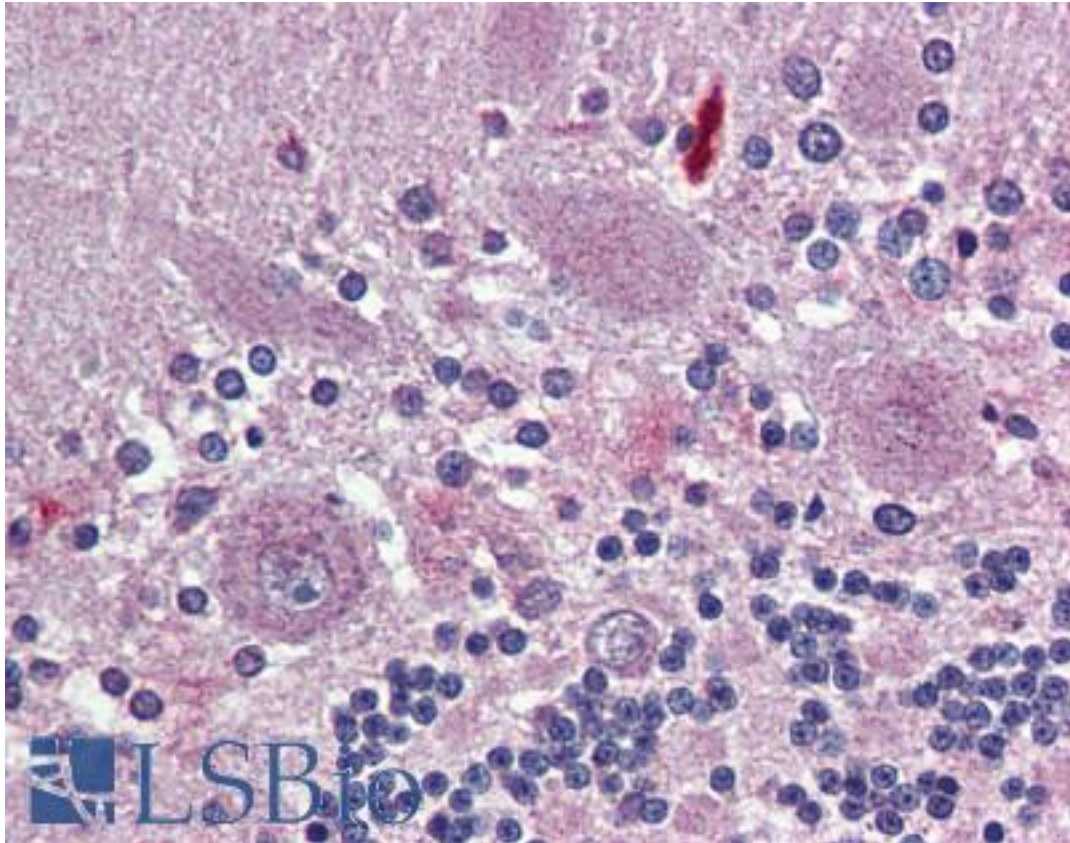


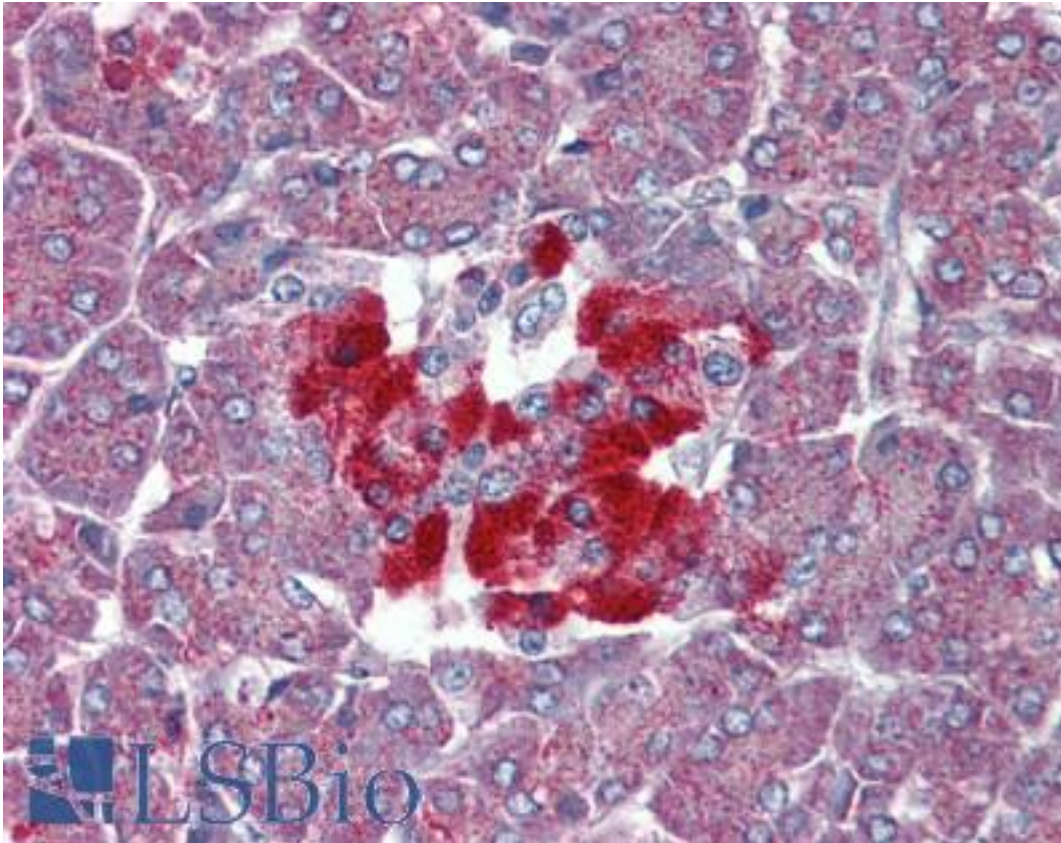
TAAR8 Rabbit anti-Human Polyclonal (C-Terminus) Antibody - LS-A2319 - LSBio	
CatalogID:	LS-A2319
Target:	trace amine associated receptor 8 (TAAR8)
Synonyms:	TAAR8 Antibody, G-protein coupled receptor 102 Antibody, GPR102 Antibody, G protein-coupled receptor 102 Antibody, TA5 Antibody, TaR-8 Antibody, Trace amine receptor 5 Antibody, TaR-5 Antibody, TAR5 Antibody, Trace amine receptor 8 Antibody, TRAR5 Antibody
Family / Subfamily:	GPCR / Orphan-A
Host	TAAR8 antibody was produced in Rabbit
Clonality:	Polyclonal
Immunogen Species:	TAAR8 antibody was raised against Human
Antigen Type:	Synthetic peptide
Immunogen:	TAAR8 antibody was raised against synthetic 12 amino acid peptide from C-Terminus of human TAAR8. Percent identity with other species by BLAST analysis: Human, Gorilla (100%); Galago (83%).
Specificity:	Human TAAR8. BLAST analysis of the peptide immunogen showed no homology with other human proteins.
Epitope:	C-Terminus
Reactivity:	Human, Gorilla
Purification:	Immunoaffinity purified
Presentation:	PBS, 0.1% sodium azide.
Recommended Storage:	Long term: -70°C; Short term: +4°C
Usage Summary:	Immunohistochemistry: LS-A2319 was validated for use in immunohistochemistry on a panel of 21 formalin-fixed, paraffin-embedded (FFPE) human tissues after proteinase K antigen retrieval. After incubation with the primary antibody, slides were incubated with biotinylated secondary antibody, followed by alkaline phosphatase-streptavidin and chromogen. The stained slides were evaluated by a pathologist to confirm staining specificity. The optimal working concentration for LS-A2319 was determined to be 5 ug/ml.
Uses:	IHC - Paraffin (5 µg/ml), ELISA (Optimal dilution to be determined by the researcher)
Size:	50 µg
Concentration:	1 mg/ml

Immunohistochemistry Image:



Anti-TAAR8 antibody LS-A2319 IHC of human brain, cerebellum. Immunohistochemistry of formalin-fixed, paraffin-embedded tissue after heat-induced antigen retrieval.

Immunohistochemistry Image:



Anti-TAAR8 antibody LS-A2319 IHC of human pancreas. Immunohistochemistry of formalin-fixed, paraffin-embedded tissue after heat-induced antigen retrieval.

Requested From:

Japan

Laboratory Reagent For In Vitro Research Use Only

Not for resale without prior written consent from LifeSpan BioSciences, Inc.

Created on 9/23/2014

© 2014 LifeSpan BioSciences