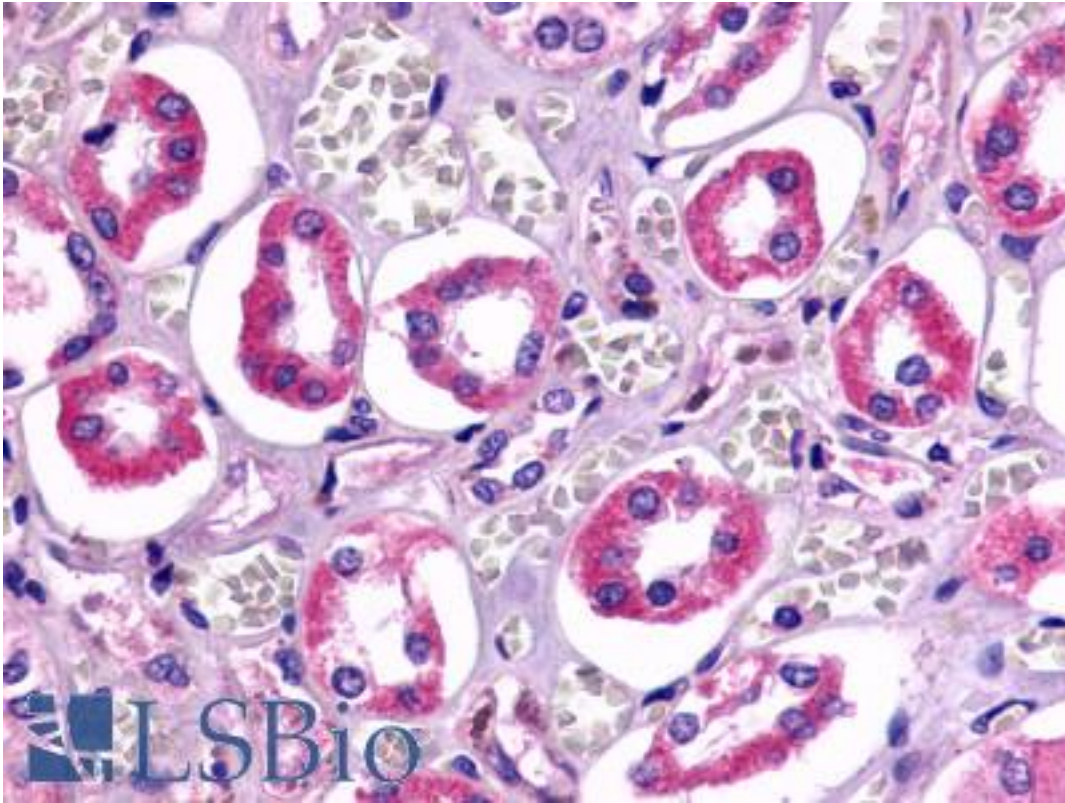


**TAAR6 Rabbit anti-Human Polyclonal (Cytoplasmic Domain) Antibody - LS-A2312 - LSBio**

<b>CatalogID:</b>	LS-A2312
<b>Target:</b>	trace amine associated receptor 6 (TAAR6)
<b>Synonyms:</b>	TAAR6 Antibody, TA4 Antibody, TaR-4 Antibody, TAR4 Antibody, TAR6 Antibody, TaR-6 Antibody, TRAR4 Antibody, Trace amine receptor 4 Antibody, Trace amine receptor 6 Antibody, RP11-295F4.3 Antibody
<b>Family / Subfamily:</b>	GPCR / Orphan-A
<b>Host</b>	TAAR6 antibody was produced in Rabbit
<b>Clonality:</b>	Polyclonal
<b>Immunogen Species:</b>	TAAR6 antibody was raised against Human
<b>Antigen Type:</b>	Synthetic peptide
<b>Immunogen:</b>	TAAR6 antibody was raised against synthetic 16 amino acid peptide from 3rd cytoplasmic domain of human TAAR6. Percent identity with other species by BLAST analysis: Human, Chimpanzee (100%); Bovine (94%); Mouse, Hamster, Pig (88%); Monkey, Horse (81%).
<b>Specificity:</b>	Human TAAR6. BLAST analysis of the peptide immunogen showed no homology with other human proteins.
<b>Epitope:</b>	Cytoplasmic Domain
<b>Reactivity:</b>	Human, Chimpanzee
<b>Predicted Reactivity:</b>	Bovine
<b>Purification:</b>	Immunoaffinity purified
<b>Presentation:</b>	PBS, 0.1% sodium azide.
<b>Recommended Storage:</b>	Long term: -70°C; Short term: +4°C
<b>Uses:</b>	IHC - Paraffin (3 - 7 µg/ml) (Optimal dilution to be determined by the researcher)
<b>Size:</b>	50 µg
<b>Concentration:</b>	1 mg/ml

**Immunohistochemistry Image:**



Anti-TAAR6 antibody LS-A2312 IHC of human kidney, renal tubules. Immunohistochemistry of formalin-fixed, paraffin-embedded tissue after heat-induced antigen retrieval.

**Requested From:**

Japan

Laboratory Reagent For In Vitro Research Use Only

Not for resale without prior written consent from LifeSpan BioSciences, Inc.

Created on 9/23/2014

© 2014 LifeSpan BioSciences