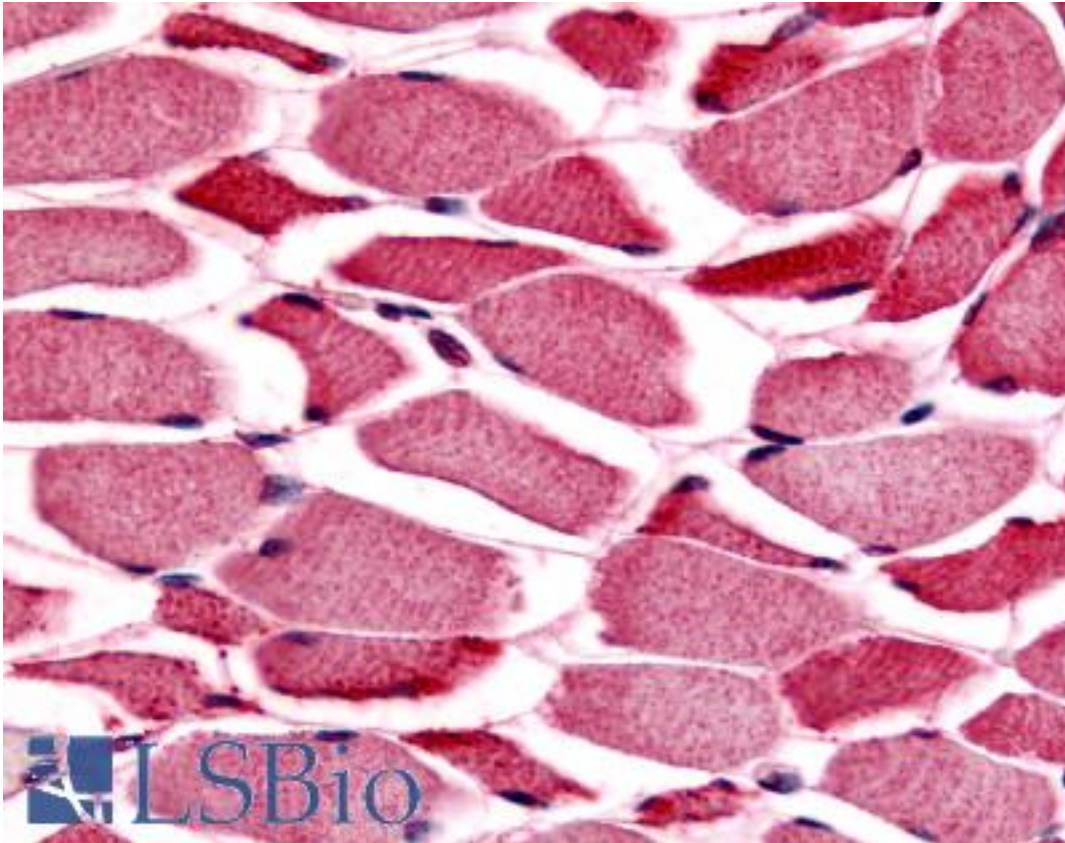


| PYGM Rabbit anti-Human Polyclonal (Internal) Antibody - LS-A2284 - LSBio | |
|--|---|
| CatalogID: | LS-A2284 |
| Target: | phosphorylase, glycogen, muscle (PYGM) |
| Synonyms: | PYGM Antibody, GPMM Antibody, Myophosphorylase Antibody, Phosphorylase, glycogen muscle Antibody |
| Host | PYGM antibody was produced in Rabbit |
| Clonality: | Polyclonal |
| Immunogen Species: | PYGM antibody was raised against Human |
| Antigen Type: | Synthetic phospho-peptide |
| Immunogen: | PYGM antibody was raised against synthetic 10 amino acid peptide from internal region of human PYGM / Phosphorylase b. Percent identity with other species by BLAST analysis: Human, Gorilla, Gibbon, Baboon, Monkey, Galago, Marmoset, Mouse, Rat, Sheep, Dog, Bovine, Elephant, Panda, Rabbit, Armadillo (100%); Shrew, Bat, Pig, Platypus (90%); Xenopus, Penicillium (80%). |
| Specificity: | Human PYGM / Phosphorylase b. BLAST analysis of the peptide immunogen showed no homology with other human proteins. |
| Epitope: | Internal |
| Reactivity: | Human, Gorilla, Gibbon, Monkey, Mouse, Rat, Bovine, Dog, Rabbit, Sheep |
| Predicted Reactivity: | Bat, Pig |
| Purification: | Immunoaffinity purified |
| Presentation: | PBS, 0.1% sodium azide. |
| Recommended Storage: | Long term: -70°C; Short term: +4°C |
| Uses: | IHC - Paraffin (10 µg/ml) (Optimal dilution to be determined by the researcher) |
| Size: | 50 µg |
| Concentration: | 1 mg/ml |

Immunohistochemistry Image:



Anti-PYGM / Phosphorylase b antibody LS-A2284 IHC of human skeletal muscle.
Immunohistochemistry of formalin-fixed, paraffin-embedded tissue after heat-induced antigen retrieval.

Requested From:

Japan

Laboratory Reagent For In Vitro Research Use Only

Not for resale without prior written consent from LifeSpan BioSciences, Inc.

Created on 9/23/2014

© 2014 LifeSpan BioSciences