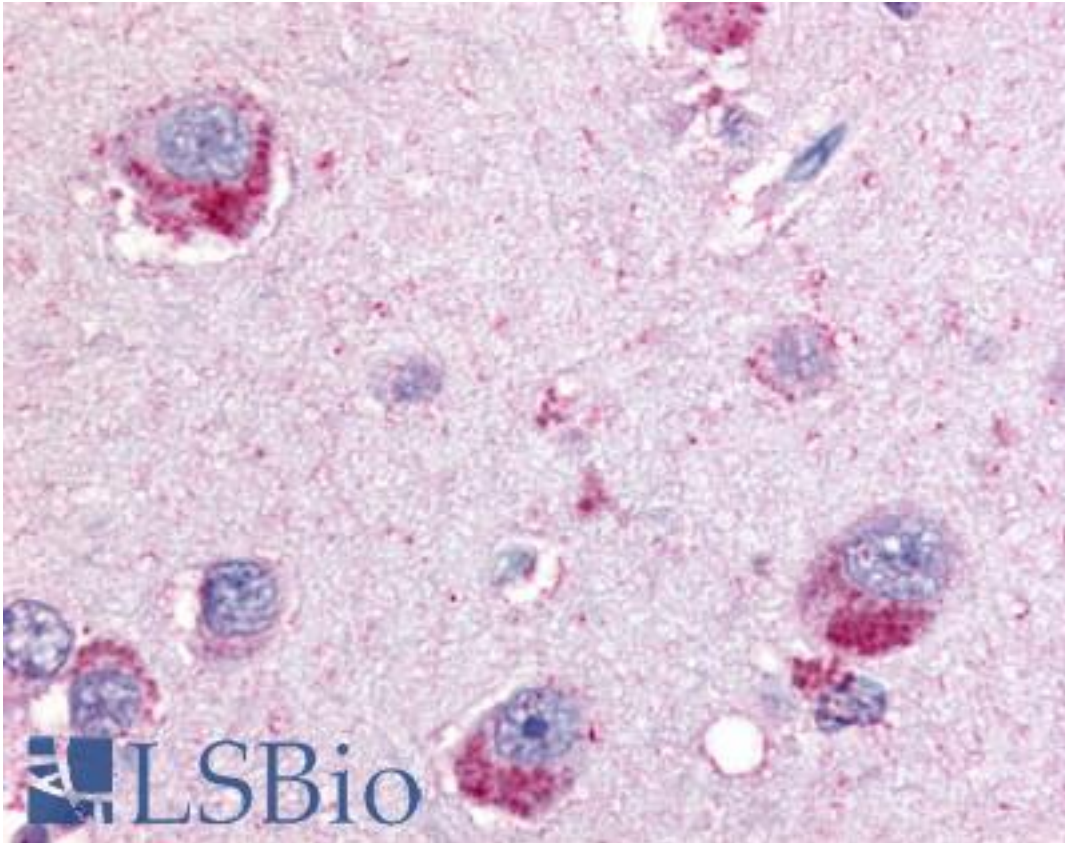


GPBB / PYGB Rabbit anti-Human Polyclonal (Internal) Antibody - LS-A2282 - LSBio	
<b>CatalogID:</b>	LS-A2282
<b>Target:</b>	phosphorylase, glycogen; brain (PYGB)
<b>Synonyms:</b>	PYGB Antibody, GPBB Antibody, Phosphorylase, glycogen Antibody, Phosphorylase, glycogen brain Antibody, Glycogen phosphorylase B Antibody
<b>Host</b>	PYGB antibody was produced in Rabbit
<b>Clonality:</b>	Polyclonal
<b>Immunogen Species:</b>	GPBB / PYGB antibody was raised against Human
<b>Antigen Type:</b>	Synthetic peptide
<b>Immunogen:</b>	GPBB / PYGB antibody was raised against synthetic 10 amino acid peptide from internal region of human PYGB. Percent identity with other species by BLAST analysis: Human, Gorilla, Orangutan, Gibbon, Monkey, Marmoset, Elephant (100%); Mouse, Bat, Hamster, Opossum, Platypus (90%); Rat, Dog, Panda, Horse, Rabbit, Lizard, Salmon, Pufferfish, Zebrafish (80%).
<b>Specificity:</b>	Human PYGB. BLAST analysis of the peptide immunogen showed no homology with other human proteins.
<b>Epitope:</b>	Internal
<b>Reactivity:</b>	Human, Gorilla, Orangutan, Gibbon, Monkey
<b>Predicted Reactivity:</b>	Mouse, Bat, Hamster
<b>Purification:</b>	Immunoaffinity purified
<b>Presentation:</b>	PBS, 0.1% sodium azide.
<b>Recommended Storage:</b>	Long term: -70°C; Short term: +4°C
<b>Usage Summary:</b>	Immunohistochemistry: LS-A2282 was validated for use in immunohistochemistry on a panel of 21 formalin-fixed, paraffin-embedded (FFPE) human tissues after heat induced antigen retrieval in pH 6.0 citrate buffer. After incubation with the primary antibody, slides were incubated with biotinylated secondary antibody, followed by alkaline phosphatase-streptavidin and chromogen. The stained slides were evaluated by a pathologist to confirm staining specificity. The optimal working concentration for LS-A2282 was determined to be 10 ug/ml.
<b>Uses:</b>	IHC - Paraffin (10 µg/ml) (Optimal dilution to be determined by the researcher)
<b>Size:</b>	50 µg
<b>Concentration:</b>	1 mg/ml

**Immunohistochemistry Image:**



Anti-PYGB antibody LS-A2282 IHC of human brain. Immunohistochemistry of formalin-fixed, paraffin-embedded tissue after heat-induced antigen retrieval.

**Requested From:**

Japan

Laboratory Reagent For In Vitro Research Use Only

Not for resale without prior written consent from LifeSpan BioSciences, Inc.

Created on 9/23/2014

© 2014 LifeSpan BioSciences