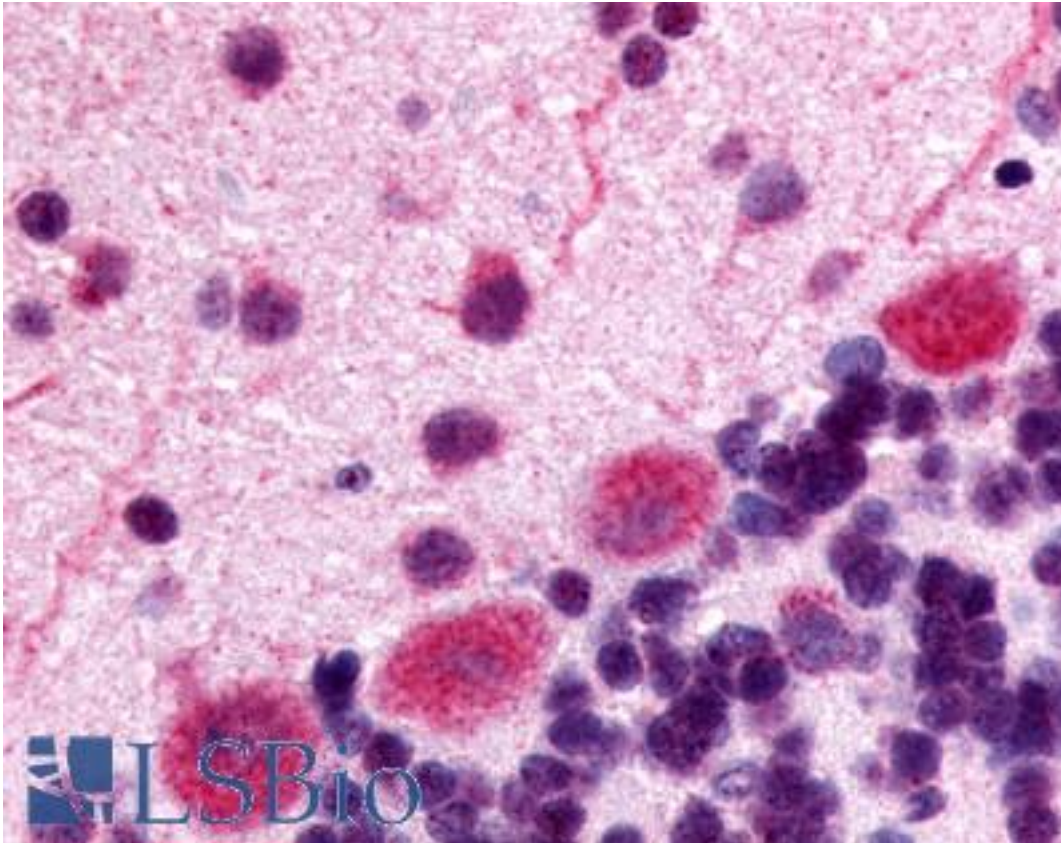


OPRK1 / Kappa Opioid Receptor Rabbit anti-Human Polyclonal (Extracellular Domain) Antibody - LS-A228 - LSBio

CatalogID:	LS-A228
Target:	opioid receptor, kappa 1 (OPRK1)
Synonyms:	OPRK1 Antibody, Kappa-type opioid receptor Antibody, Opiate receptor, kappa-1 Antibody, K-OR-1 Antibody, KOR Antibody, Opioid receptor, kappa 1 Antibody, OPRK Antibody, Ork1 Antibody, Kappa opioid receptor Antibody, KOR-1 Antibody, Opioid receptor kappa Antibody
Family / Subfamily:	GPCR / Opioid
Host	OPRK1 antibody was produced in Rabbit
Clonality:	Polyclonal
Immunogen Species:	OPRK1 / Kappa Opioid Receptor antibody was raised against Human
Antigen Type:	Synthetic peptide
Immunogen:	OPRK1 / Kappa Opioid Receptor antibody was raised against synthetic 19 amino acid peptide from 2nd extracellular domain of human Kappa Opioid Receptor. Percent identity with other species by BLAST analysis: Human, Gibbon, Monkey, Marmoset, Dog, Horse, Rabbit (100%); Gorilla, Mouse, Rat, Elephant, Guinea pig (95%); Bat, Bovine, Panda (89%); Opossum (84%).
Specificity:	Human Kappa Opioid Receptor. BLAST analysis of the peptide immunogen showed no homology with other human proteins.
Epitope:	Extracellular Domain
Reactivity:	Human, Gibbon, Monkey, Rat, Dog, Horse, Rabbit
Predicted Reactivity:	Gorilla, Mouse, Guinea pig
Purification:	Immunoaffinity purified
Presentation:	PBS, 0.1% sodium azide.
Recommended Storage:	Long term: -70°C; Short term: +4°C
Uses:	IHC - Paraffin (4 µg/ml) (Optimal dilution to be determined by the researcher)
Size:	50 µg
Concentration:	1 mg/ml

Immunohistochemistry Image:



Anti-Kappa Opioid Receptor antibody LS-A228 IHC of rat brain, Purkinje neurons.
Immunohistochemistry of formalin-fixed, paraffin-embedded tissue after heat-induced antigen retrieval.

Requested From:

Japan

Laboratory Reagent For In Vitro Research Use Only

Not for resale without prior written consent from LifeSpan BioSciences, Inc.

Created on 9/23/2014

© 2014 LifeSpan BioSciences