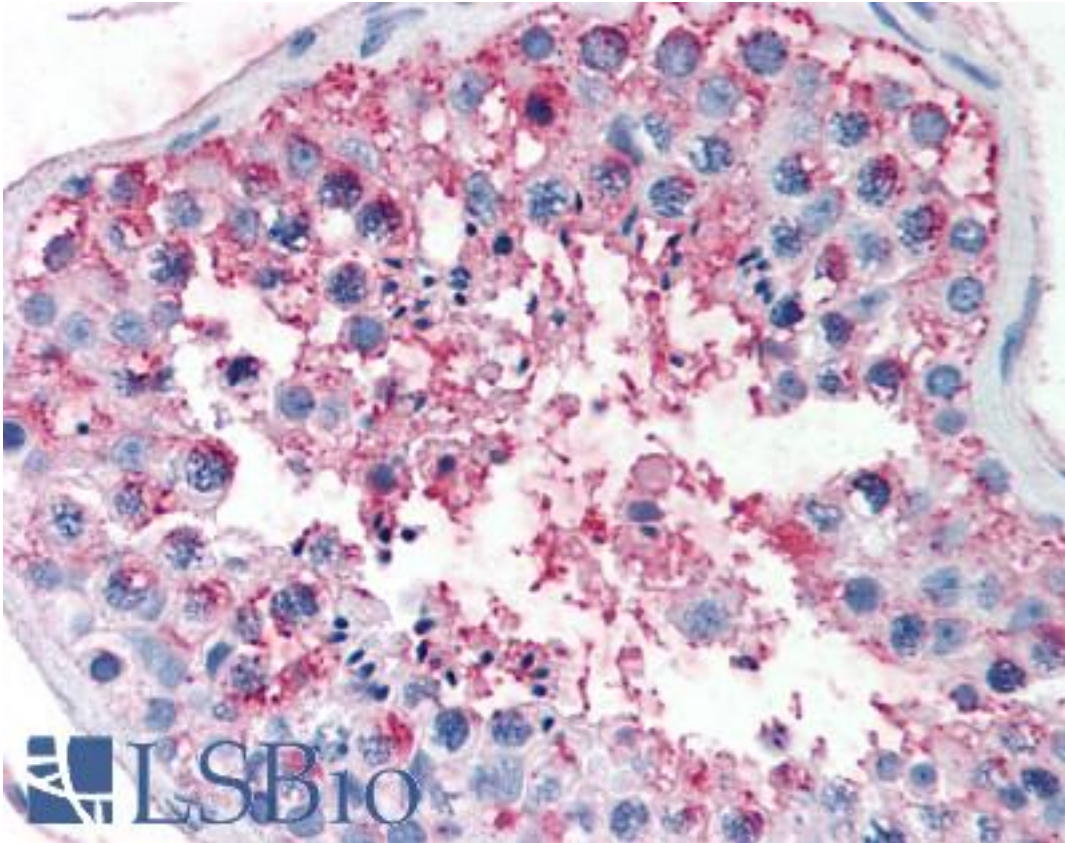


FSH Receptor / FSHR Rabbit anti-Human Polyclonal (N-Terminus) Antibody - LS-A2231 - LSBio	
CatalogID:	LS-A2231
Target:	follicle stimulating hormone receptor (FSHR)
Synonyms:	FSHR Antibody, Follitropin receptor Antibody, FSHRO Antibody, Ovarian dysgenesis 1 Antibody, FSH receptor Antibody, FSH-R Antibody, LGR1 Antibody, ODG1 Antibody
Family / Subfamily:	GPCR / Glycoprotein hormone
Host	FSHR antibody was produced in Rabbit
Clonality:	Polyclonal
Immunogen Species:	FSH Receptor / FSHR antibody was raised against Human
Antigen Type:	Synthetic peptide
Immunogen:	FSH Receptor / FSHR antibody was raised against synthetic 17 amino acid peptide from N-terminal extracellular domain of human FSHR. Percent identity with other species by BLAST analysis: Human, Gorilla, Monkey, Marmoset (100%); Gibbon, Dog, Bat, Elephant, Rabbit, Horse, Pig, Guinea pig (94%); Bovine, Cat, Goat (88%); Mouse, Rat, Sheep (82%).
Specificity:	Human FSHR. BLAST analysis of the peptide immunogen showed no homology with other human proteins.
Epitope:	N-Terminus
Reactivity:	Human, Gorilla, Monkey
Predicted Reactivity:	Gibbon, Bat, Dog, Guinea pig, Horse, Pig, Rabbit
Purification:	Immunoaffinity purified
Presentation:	PBS, 0.1% sodium azide.
Recommended Storage:	Long term: -70°C; Short term: +4°C
Uses:	IHC - Paraffin (7 - 14 µg/ml) (Optimal dilution to be determined by the researcher)
Size:	50 µg
Concentration:	1 mg/ml

Immunohistochemistry Image:



Anti-FSHR antibody LS-A2231 IHC of human testis. Immunohistochemistry of formalin-fixed, paraffin-embedded tissue after heat-induced antigen retrieval.

Requested From:

Japan

Laboratory Reagent For In Vitro Research Use Only

Not for resale without prior written consent from LifeSpan BioSciences, Inc.

Created on 9/23/2014

© 2014 LifeSpan BioSciences