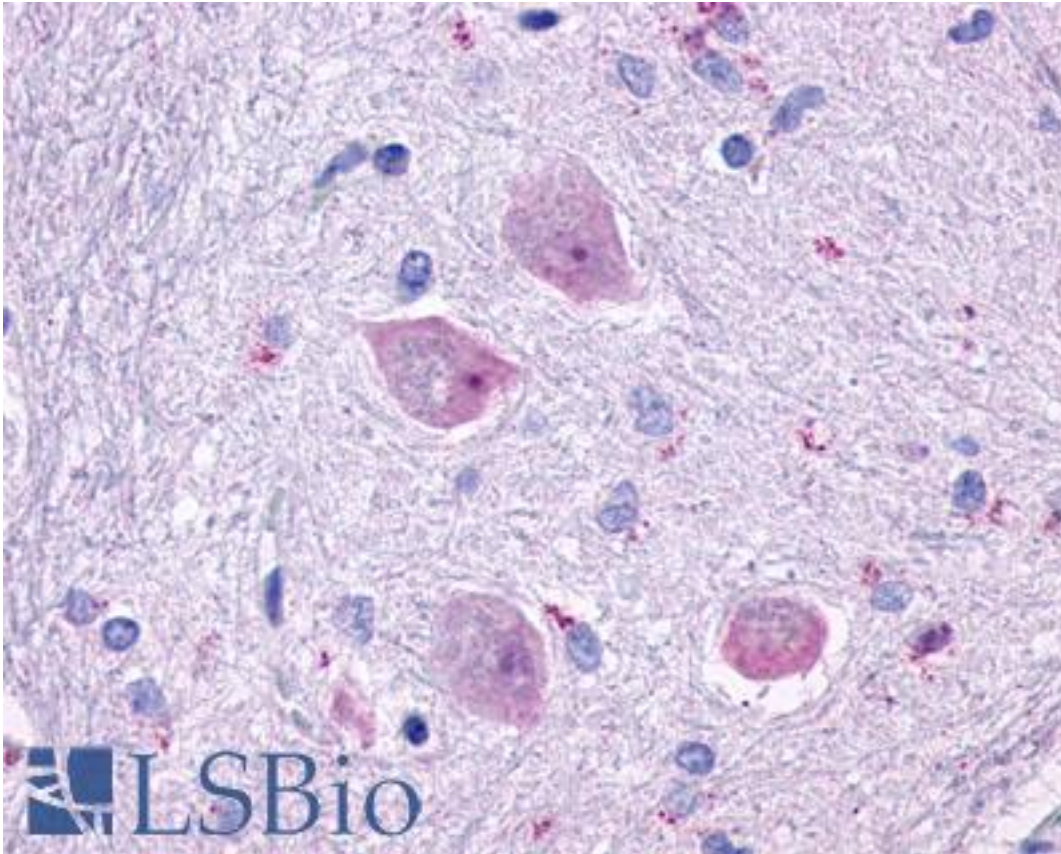


CHRM4 / M4 Rabbit anti-Human Polyclonal (Cytoplasmic Domain) Antibody - LS-A220 - LSBio

CatalogID:	LS-A220
Target:	cholinergic receptor, muscarinic 4 (CHRM4)
Synonyms:	CHRM4 Antibody, M4 muscarinic receptor Antibody, M4R Antibody, Muscarinic m4 receptor Antibody, HM4 Antibody, Muscarinic receptor m4 Antibody
Family / Subfamily:	GPCR / Acetylcholine
Host	CHRM4 antibody was produced in Rabbit
Clonality:	Polyclonal
Immunogen Species:	CHRM4 / M4 antibody was raised against Human
Antigen Type:	Synthetic peptide
Immunogen:	CHRM4 / M4 antibody was raised against synthetic 20 amino acid peptide from 3rd cytoplasmic domain of human CHRM4. Percent identity with other species by BLAST analysis: Human, Gorilla, Mouse, Rat, Bovine, Hamster, Horse, Pig, Guinea pig (100%); Dog, Elephant, Panda (95%); Bat (90%).
Specificity:	Human CHRM4. BLAST analysis of the peptide immunogen showed no homology with other human proteins.
Epitope:	Cytoplasmic Domain
Reactivity:	Human, Gorilla, Mouse, Rat, Bovine, Guinea pig, Hamster, Horse, Pig
Predicted Reactivity:	Bat, Dog
Purification:	Immunoaffinity purified
Presentation:	PBS, 0.1% sodium azide.
Recommended Storage:	Long term: -70°C; Short term: +4°C
Uses:	IHC - Paraffin (3 µg/ml) (Optimal dilution to be determined by the researcher)
Size:	50 µg
Concentration:	1 mg/ml

Immunohistochemistry Image:



Anti-CHRM4 antibody LS-A220 IHC of human brain, neurons and glia. Immunohistochemistry of formalin-fixed, paraffin-embedded tissue after heat-induced antigen retrieval.

Requested From:

Japan

Laboratory Reagent For In Vitro Research Use Only

Not for resale without prior written consent from LifeSpan BioSciences, Inc.

Created on 9/23/2014

© 2014 LifeSpan BioSciences