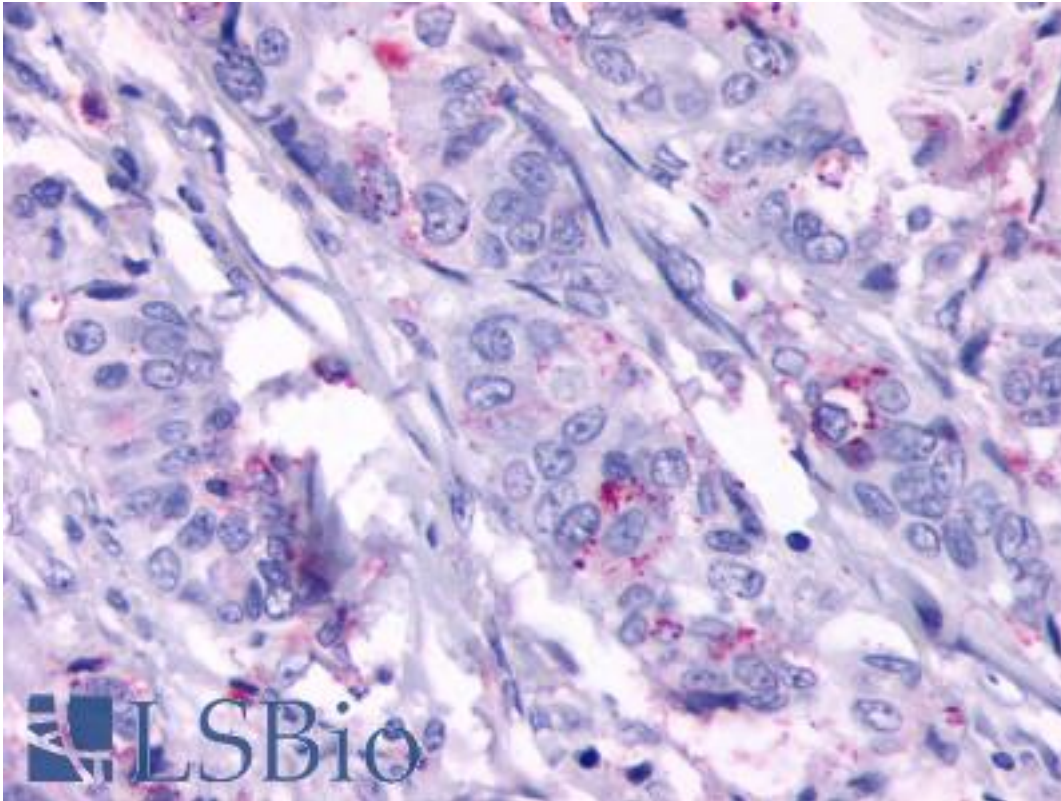


GPR124 / TEM5 Rabbit anti-Human Polyclonal (N-Terminus) Antibody - LS-A2167 - LSBio	
CatalogID:	LS-A2167
Target:	G protein-coupled receptor 124 (GPR124)
Synonyms:	GPR124 Antibody, G protein-coupled receptor 124 Antibody, G-protein coupled receptor 124 Antibody, TEM5 Antibody, KIAA1531 Antibody, Tumor endothelial marker 5 Antibody
Family / Subfamily:	GPCR / Orphan-U
Host	GPR124 antibody was produced in Rabbit
Clonality:	Polyclonal
Immunogen Species:	GPR124 / TEM5 antibody was raised against Human
Antigen Type:	Synthetic peptide
Immunogen:	GPR124 / TEM5 antibody was raised against synthetic 17 amino acid peptide from N-terminal extracellular domain of human GPR124. Percent identity with other species by BLAST analysis: Human, Gorilla, Gibbon, Marmoset, Dog, Bat, Elephant, Panda, Horse, Rabbit, Pig, Opossum (100%); Mouse, Rat, Hamster, Turkey, Chicken, Xenopus (94%); Monkey, Bovine, Platypus, Lizard (82%).
Specificity:	Human GPR124. BLAST analysis of the peptide immunogen showed no homology with other human proteins, except GPR125 (82%).
Epitope:	N-Terminus
Reactivity:	Human, Gorilla, Gibbon, Monkey, Bat, Dog, Horse, Pig, Rabbit
Predicted Reactivity:	Mouse, Rat, Hamster, Chicken, Xenopus
Purification:	Immunoaffinity purified
Presentation:	PBS, 0.1% sodium azide.
Recommended Storage:	Long term: -70°C; Short term: +4°C
Uses:	IHC - Paraffin (4 µg/ml) (Optimal dilution to be determined by the researcher)
Size:	50 µg
Concentration:	1 mg/ml

Immunohistochemistry Image:



Anti-GPR124 antibody LS-A2167 IHC of human colon carcinoma, neoplastic cells.
Immunohistochemistry of formalin-fixed, paraffin-embedded tissue after heat-induced antigen retrieval.

Requested From:

Japan

Laboratory Reagent For In Vitro Research Use Only

Not for resale without prior written consent from LifeSpan BioSciences, Inc.

Created on 9/23/2014

© 2014 LifeSpan BioSciences