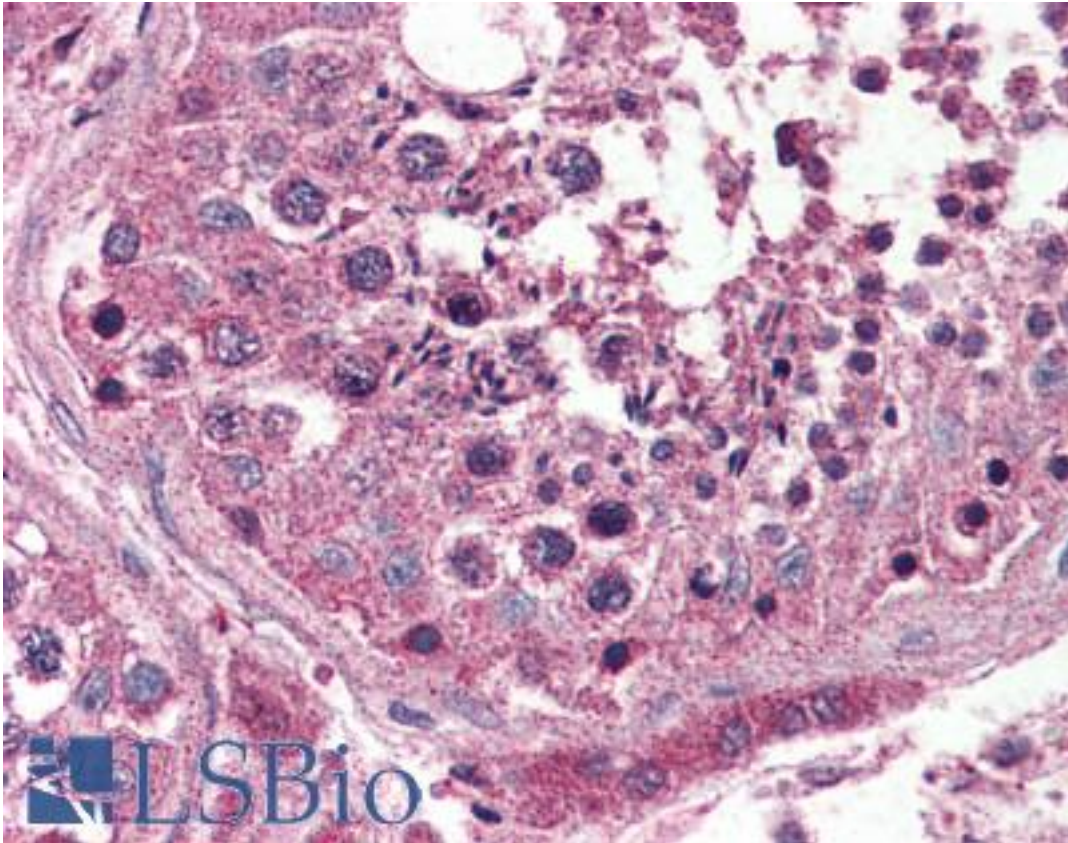


Encephalopsin / OPN3 Rabbit anti-Human Polyclonal (Internal) Antibody - LS-A2131 - LSBio

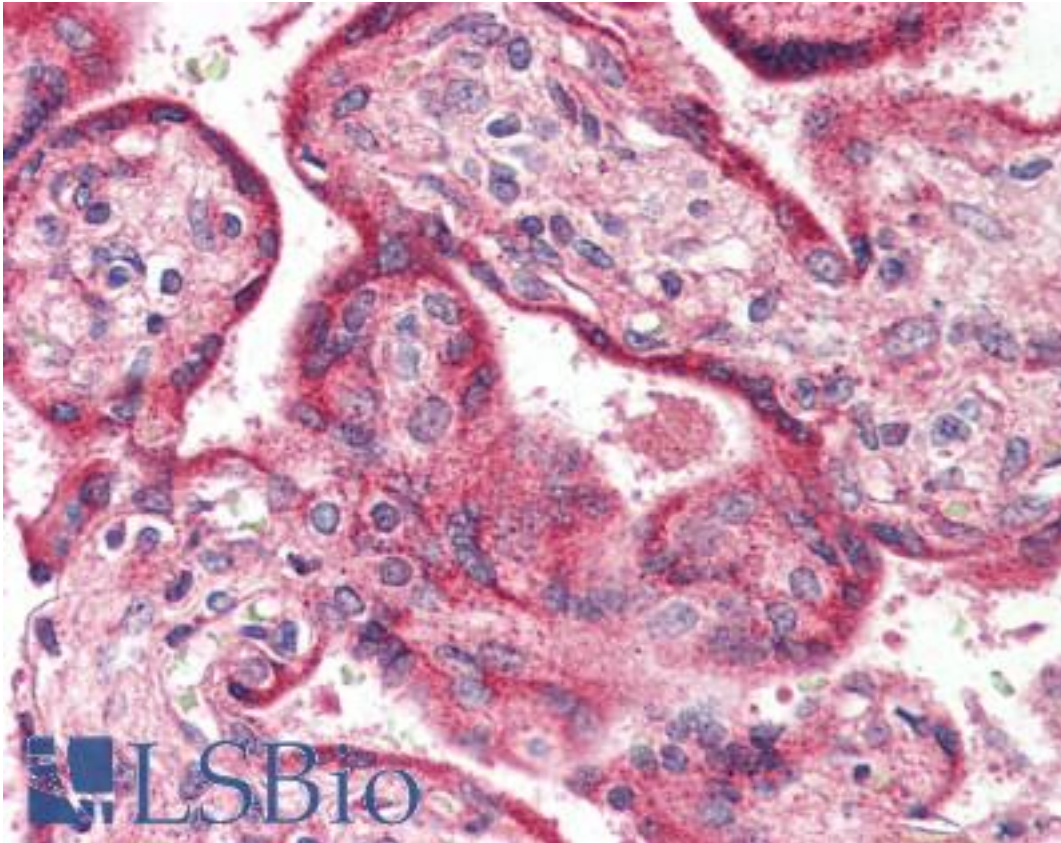
<b>CatalogID:</b>	LS-A2131
<b>Target:</b>	opsin 3 (OPN3)
<b>Synonyms:</b>	OPN3 Antibody, ERO Antibody, Encephalopsin Antibody, NMO-1 Antibody, Opsin 3 Antibody, Opsin-3 Antibody, ECPN Antibody, Panopsin Antibody
<b>Family / Subfamily:</b>	GPCR / Opsin
<b>Host</b>	OPN3 antibody was produced in Rabbit
<b>Clonality:</b>	Polyclonal
<b>Immunogen Species:</b>	Encephalopsin / OPN3 antibody was raised against Human
<b>Antigen Type:</b>	Synthetic peptide
<b>Immunogen:</b>	Encephalopsin / OPN3 antibody was raised against synthetic 16 amino acid peptide from internal region of human OPN3 / Encephalopsin. Percent identity with other species by BLAST analysis: Human, Gibbon, Monkey, Marmoset, Rat (100%); Mouse, Dog, Panda, Rabbit (94%); Horse, Opossum (88%); Turkey (81%).
<b>Specificity:</b>	Human OPN3 / Encephalopsin. BLAST analysis of the peptide immunogen showed no homology with other human proteins.
<b>Epitope:</b>	Internal
<b>Reactivity:</b>	Human, Gibbon, Monkey, Rat
<b>Predicted Reactivity:</b>	Mouse, Dog, Rabbit
<b>Purification:</b>	Immunoaffinity purified
<b>Presentation:</b>	PBS, 0.1% sodium azide.
<b>Recommended Storage:</b>	Long term: -70°C; Short term: +4°C
<b>Usage Summary:</b>	Immunohistochemistry: LS-A2131 was validated for use in immunohistochemistry on a panel of 21 formalin-fixed, paraffin-embedded (FFPE) human tissues after proteinase K antigen retrieval. After incubation with the primary antibody, slides were incubated with biotinylated secondary antibody, followed by alkaline phosphatase-streptavidin and chromogen. The stained slides were evaluated by a pathologist to confirm staining specificity. The optimal working concentration for LS-A2131 was determined to be 5 ug/ml.
<b>Uses:</b>	IHC - Paraffin (5 µg/ml), ELISA (Optimal dilution to be determined by the researcher)
<b>Size:</b>	50 µg
<b>Concentration:</b>	1 mg/ml

**Immunohistochemistry Image:**



Anti-OPN3 / Enkephalopsin antibody LS-A2131 IHC of human testis. Immunohistochemistry of formalin-fixed, paraffin-embedded tissue after heat-induced antigen retrieval.

**Immunohistochemistry Image:**



Anti-OPN3 / Encephalopsin antibody LS-A2131 IHC of human placenta.  
Immunohistochemistry of formalin-fixed, paraffin-embedded tissue after heat-induced antigen retrieval.

**Requested From:**

Japan

Laboratory Reagent For In Vitro Research Use Only

Not for resale without prior written consent from LifeSpan BioSciences, Inc.

Created on 9/23/2014

© 2014 LifeSpan BioSciences