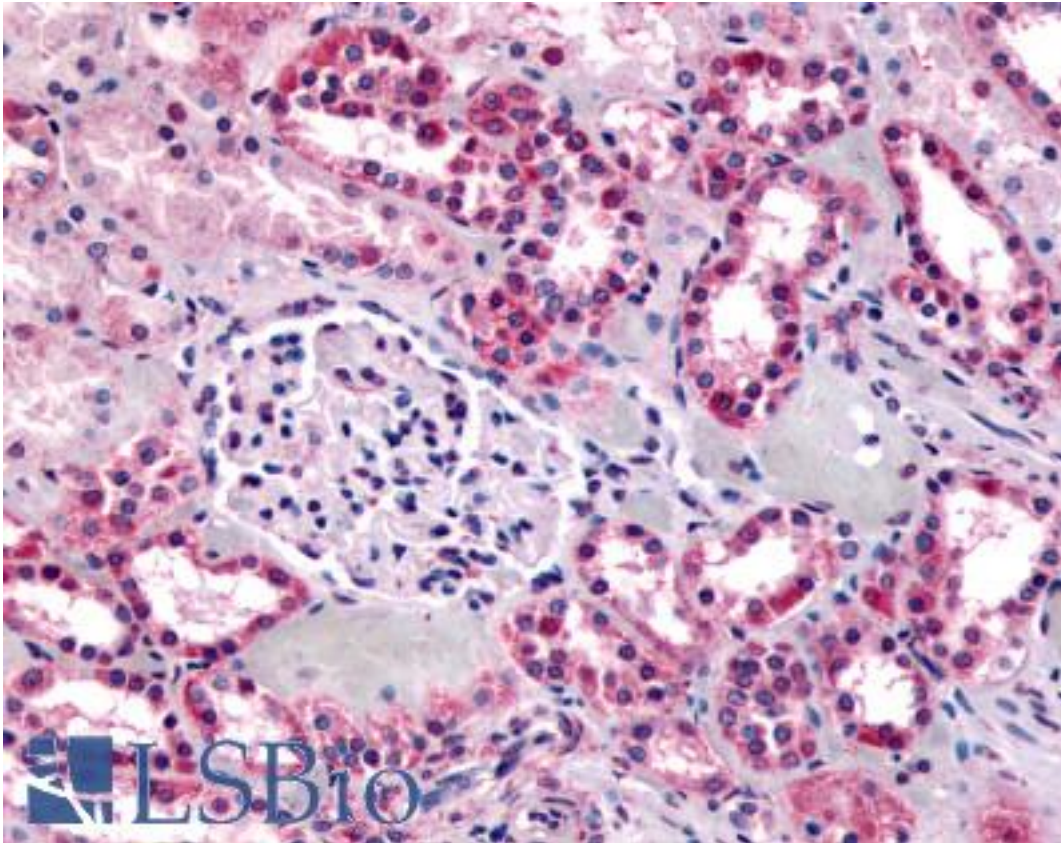


SUCNR1 / GPR91 Rabbit anti-Human Polyclonal (C-Terminus) Antibody - LS-A2112 - LSBio	
<b>CatalogID:</b>	LS-A2112
<b>Target:</b>	succinate receptor 1 (SUCNR1)
<b>Synonyms:</b>	SUCNR1 Antibody, G protein-coupled receptor 91 Antibody, GPR91 Antibody, p2Y purinoceptor 1-like Antibody, p2Y purinoceptor 1 Antibody, Succinate receptor 1 Antibody, G-protein coupled receptor 91 Antibody, p2u2 Antibody
<b>Family / Subfamily:</b>	GPCR / Purinergic
<b>Host</b>	SUCNR1 antibody was produced in Rabbit
<b>Clonality:</b>	Polyclonal
<b>Immunogen Species:</b>	SUCNR1 / GPR91 antibody was raised against Human
<b>Antigen Type:</b>	Synthetic peptide
<b>Immunogen:</b>	SUCNR1 / GPR91 antibody was raised against synthetic 18 amino acid peptide from C-terminus of human GPR91. Percent identity with other species by BLAST analysis: Human, Monkey (100%); Gorilla, Gibbon, Marmoset (94%).
<b>Specificity:</b>	Human GPR91. BLAST analysis of the peptide immunogen showed no homology with other human proteins.
<b>Epitope:</b>	C-Terminus
<b>Reactivity:</b>	Human
<b>Predicted Reactivity:</b>	Gorilla, Gibbon, Monkey
<b>Purification:</b>	Immunoaffinity purified
<b>Presentation:</b>	PBS, 0.1% sodium azide.
<b>Recommended Storage:</b>	Long term: -70°C; Short term: +4°C
<b>Uses:</b>	IHC - Paraffin (16 µg/ml) (Optimal dilution to be determined by the researcher)
<b>Size:</b>	50 µg
<b>Concentration:</b>	1 mg/ml

**Immunohistochemistry Image:**



Anti-GPR91 antibody LS-A2112 IHC of human kidney. Immunohistochemistry of formalin-fixed, paraffin-embedded tissue after heat-induced antigen retrieval.

**Requested From:**

Japan

Laboratory Reagent For In Vitro Research Use Only

Not for resale without prior written consent from LifeSpan BioSciences, Inc.

Created on 9/23/2014

© 2014 LifeSpan BioSciences