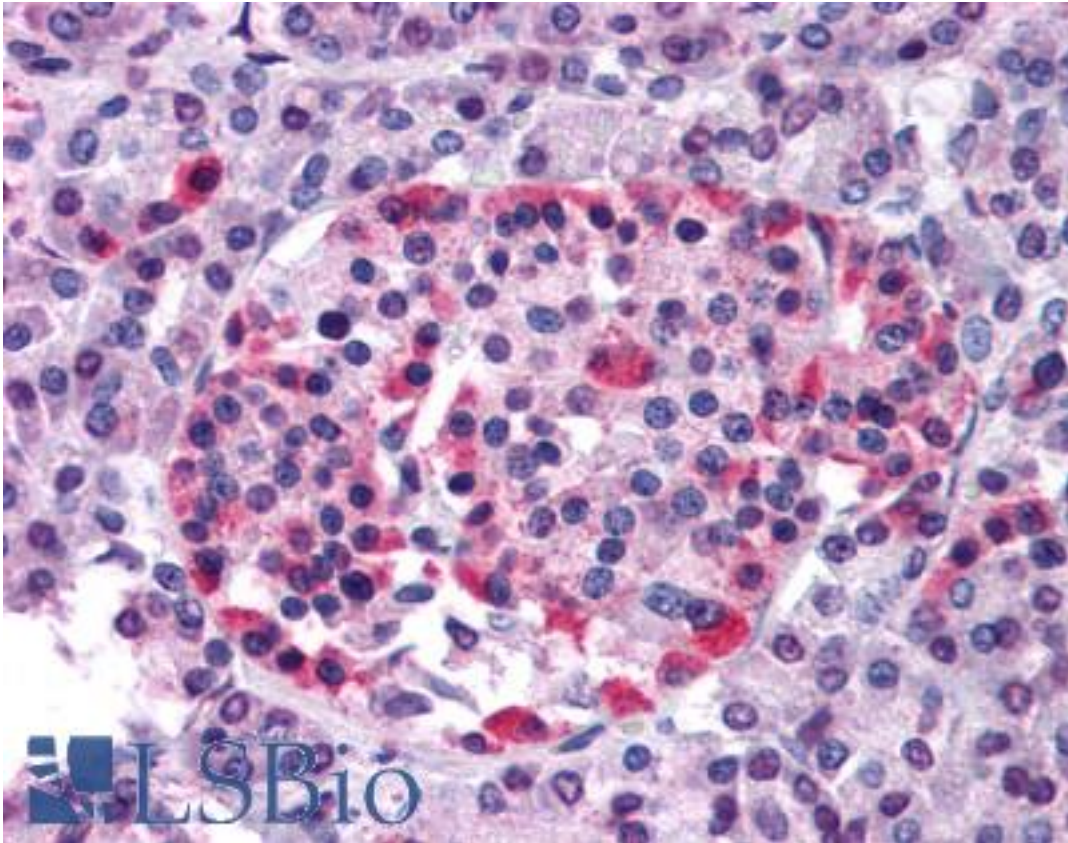


FKSG80 / GPR81 Rabbit anti-Human Polyclonal (N-Terminus) Antibody - LS-A2089 - LSBio	
CatalogID:	LS-A2089
Target:	hydroxycarboxylic acid receptor 1 (HCAR1)
Synonyms:	HCAR1 Antibody, FKSG80 Antibody, G protein-coupled receptor 81 Antibody, G-protein coupled receptor 104 Antibody, G protein-coupled receptor 104 Antibody, G-protein coupled receptor 81 Antibody, GPR81 Antibody, GPR104 Antibody, LACR1 Antibody, HCA1 Antibody, TA-GPCR Antibody, Lactate receptor 1 Antibody
Family / Subfamily:	GPCR / Chemokine
Host	HCAR1 antibody was produced in Rabbit
Clonality:	Polyclonal
Immunogen Species:	FKSG80 / GPR81 antibody was raised against Human
Antigen Type:	Synthetic peptide
Immunogen:	FKSG80 / GPR81 antibody was raised against synthetic 19 amino acid peptide from N-terminal extracellular domain of human GPR81. Percent identity with other species by BLAST analysis: Human, Monkey (100%); Gorilla (95%); Marmoset (89%); Dog, Hamster, Elephant (84%).
Specificity:	Human GPR81. BLAST analysis of the peptide immunogen showed no homology with other human proteins.
Epitope:	N-Terminus
Reactivity:	Human, Monkey
Predicted Reactivity:	Gorilla
Purification:	Immunoaffinity purified
Presentation:	PBS, 0.1% sodium azide.
Recommended Storage:	Long term: -70°C; Short term: +4°C
Usage Summary:	Immunohistochemistry: LS-A2089 was validated for use in immunohistochemistry on a panel of 21 formalin-fixed, paraffin-embedded (FFPE) human tissues after heat induced antigen retrieval in pH 6.0 citrate buffer. After incubation with the primary antibody, slides were incubated with biotinylated secondary antibody, followed by alkaline phosphatase-streptavidin and chromogen. The stained slides were evaluated by a pathologist to confirm staining specificity. The optimal working concentration for LS-A2089 was determined to be 20 ug/ml.
Uses:	IHC - Paraffin (20 µg/ml), ELISA (Optimal dilution to be determined by the researcher)
Size:	50 µg
Concentration:	1 mg/ml

Immunohistochemistry Image:



Anti-GPR81 antibody LS-A2089 IHC of human pancreas. Immunohistochemistry of formalin-fixed, paraffin-embedded tissue after heat-induced antigen retrieval.

Requested From:

Japan

Laboratory Reagent For In Vitro Research Use Only

Not for resale without prior written consent from LifeSpan BioSciences, Inc.

Created on 9/23/2014

© 2014 LifeSpan BioSciences