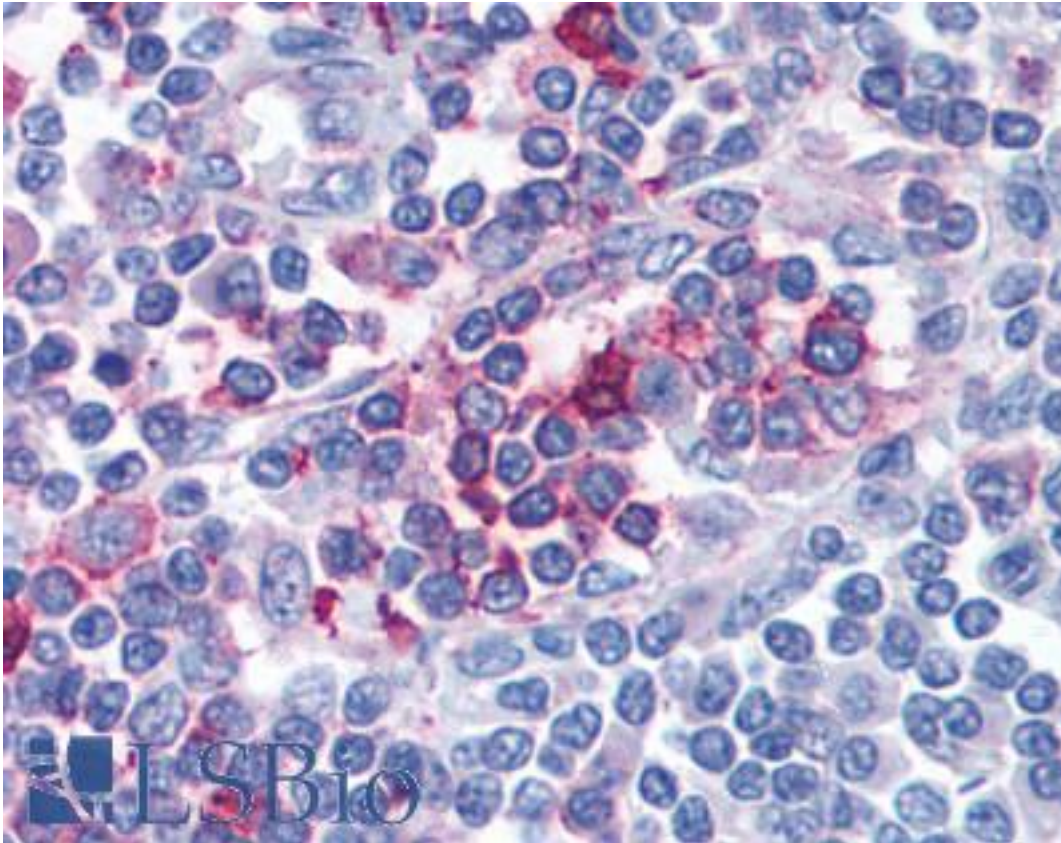


FPR1 / FPR Rabbit anti-Human Polyclonal (C-Terminus) Antibody - LS-A2088 - LSBio

CatalogID:	LS-A2088
Target:	formyl peptide receptor 1 (FPR1)
Synonyms:	FPR1 Antibody, FPR-1 Antibody, FMet-Leu-Phe receptor Antibody, FMLP Antibody, Formyl peptide receptor 1 Antibody, FPR Antibody, N-formyl peptide receptor Antibody, FMLP receptor Antibody, Fpr receptor Antibody, N-formyl peptide receptor 1 Antibody
Family / Subfamily:	GPCR / Chemoattractant
Host	FPR1 antibody was produced in Rabbit
Clonality:	Polyclonal
Immunogen Species:	FPR1 / FPR antibody was raised against Human
Antigen Type:	Synthetic peptide
Immunogen:	FPR1 / FPR antibody was raised against synthetic 16 amino acid peptide from C-terminal cytoplasmic domain of human FPR1. Percent identity with other species by BLAST analysis: Human, Chimpanzee, Gorilla, Orangutan (100%); Gibbon, Monkey (94%).
Specificity:	Human FPR1. BLAST analysis of the peptide immunogen showed no homology with other human proteins.
Epitope:	C-Terminus
Reactivity:	Human, Chimpanzee, Gorilla, Orangutan
Predicted Reactivity:	Gibbon, Monkey
Purification:	Immunoaffinity purified
Presentation:	PBS, 0.1% sodium azide.
Recommended Storage:	Long term: -70°C; Short term: +4°C
Uses:	IHC - Paraffin (10 µg/ml) (Optimal dilution to be determined by the researcher)
Size:	50 µg
Concentration:	0.7 mg/ml

Immunohistochemistry Image:



Anti-FPR1 antibody LS-A2088 IHC of human lymph node. Immunohistochemistry of formalin-fixed, paraffin-embedded tissue after heat-induced antigen retrieval.

Requested From:

Japan

Laboratory Reagent For In Vitro Research Use Only

Not for resale without prior written consent from LifeSpan BioSciences, Inc.

Created on 9/23/2014

© 2014 LifeSpan BioSciences