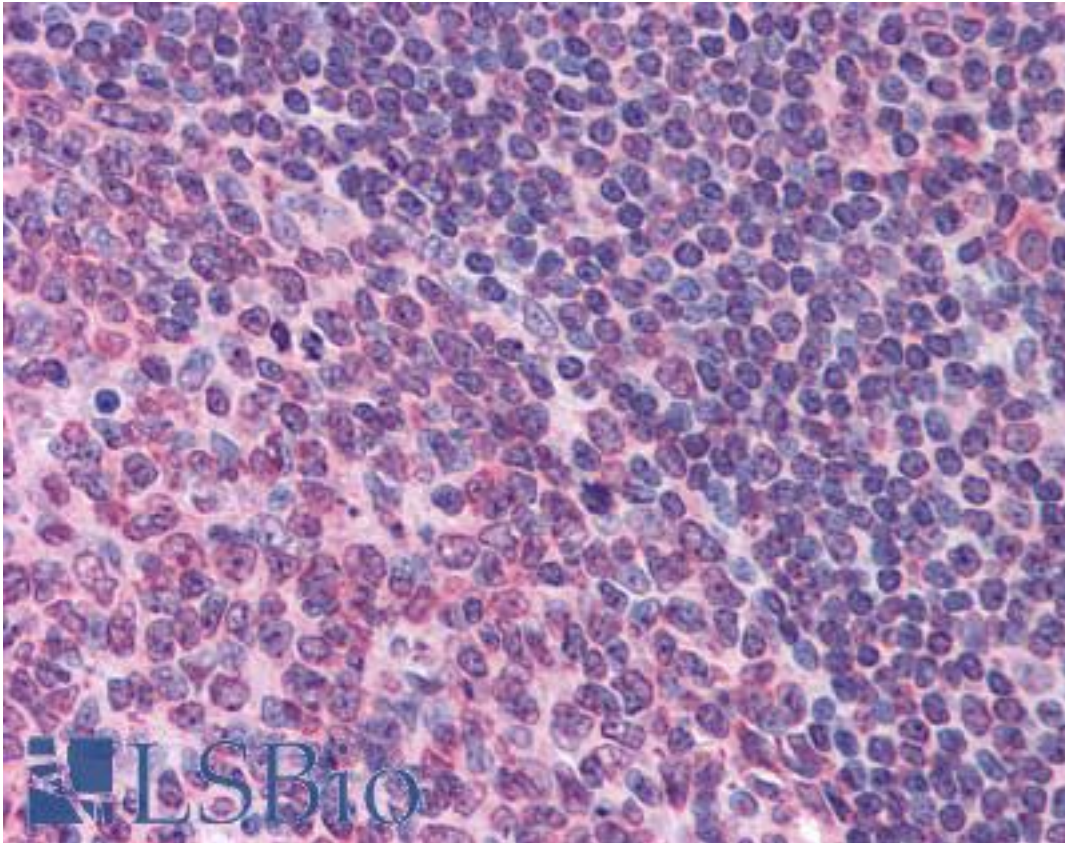


FPR1 / FPR Rabbit anti-Human Polyclonal (Extracellular Domain) Antibody - LS-A2086 - LSBio

<b>CatalogID:</b>	LS-A2086
<b>Target:</b>	formyl peptide receptor 1 (FPR1)
<b>Synonyms:</b>	FPR1 Antibody, FPR-1 Antibody, FMet-Leu-Phe receptor Antibody, FMLP Antibody, Formyl peptide receptor 1 Antibody, FPR Antibody, N-formyl peptide receptor Antibody, FMLP receptor Antibody, Fpr receptor Antibody, N-formyl peptide receptor 1 Antibody
<b>Family / Subfamily:</b>	GPCR / Chemoattractant
<b>Host</b>	FPR1 antibody was produced in Rabbit
<b>Clonality:</b>	Polyclonal
<b>Immunogen Species:</b>	FPR1 / FPR antibody was raised against Human
<b>Antigen Type:</b>	Synthetic peptide
<b>Immunogen:</b>	FPR1 / FPR antibody was raised against synthetic 16 amino acid peptide from 2nd extracellular domain of human FPR1. Percent identity with other species by BLAST analysis: Human (100%); Chimpanzee, Gorilla (94%); Orangutan (88%); Gibbon (81%).
<b>Specificity:</b>	Human FPR1. BLAST analysis of the peptide immunogen showed no homology with other human proteins.
<b>Epitope:</b>	Extracellular Domain
<b>Reactivity:</b>	Human
<b>Predicted Reactivity:</b>	Chimpanzee, Gorilla
<b>Purification:</b>	Immunoaffinity purified
<b>Presentation:</b>	PBS, 0.1% sodium azide.
<b>Recommended Storage:</b>	Long term: -70°C; Short term: +4°C
<b>Uses:</b>	IHC - Paraffin (2 µg/ml) (Optimal dilution to be determined by the researcher)
<b>Size:</b>	50 µg
<b>Concentration:</b>	1 mg/ml

**Immunohistochemistry Image:**



Anti-FPR1 antibody LS-A2086 IHC of human tonsil. Immunohistochemistry of formalin-fixed, paraffin-embedded tissue after heat-induced antigen retrieval.

**Requested From:**

Japan

Laboratory Reagent For In Vitro Research Use Only

Not for resale without prior written consent from LifeSpan BioSciences, Inc.

Created on 9/23/2014

© 2014 LifeSpan BioSciences