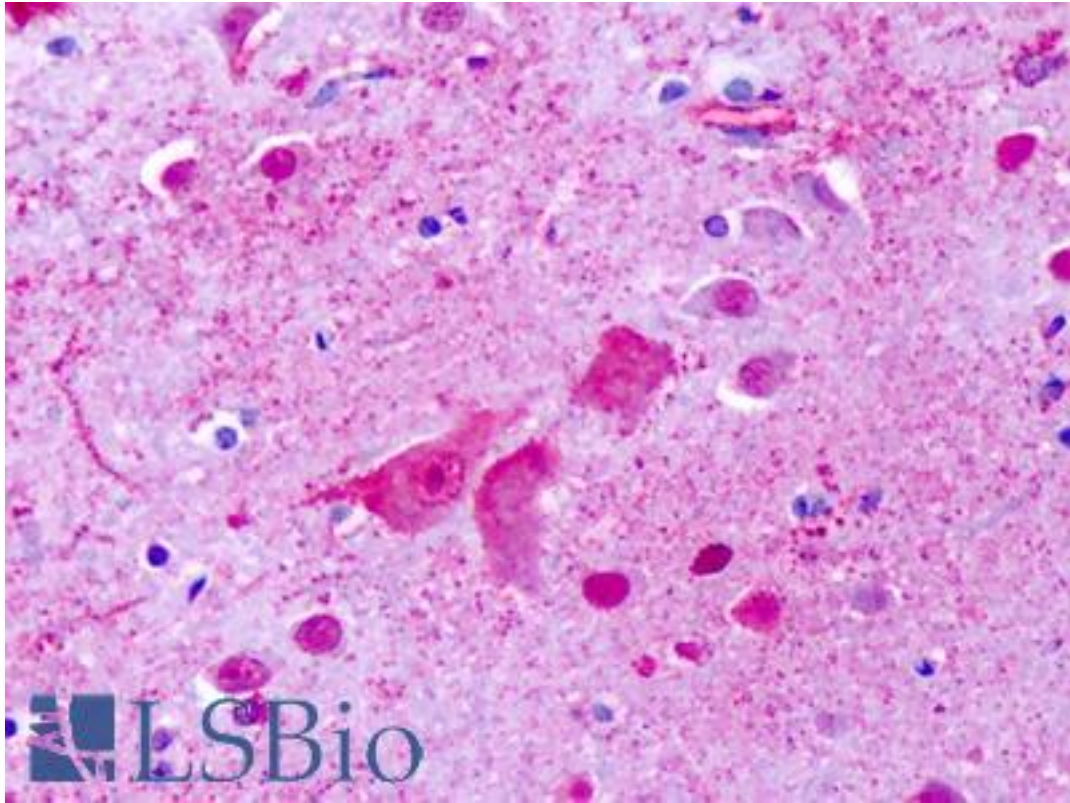


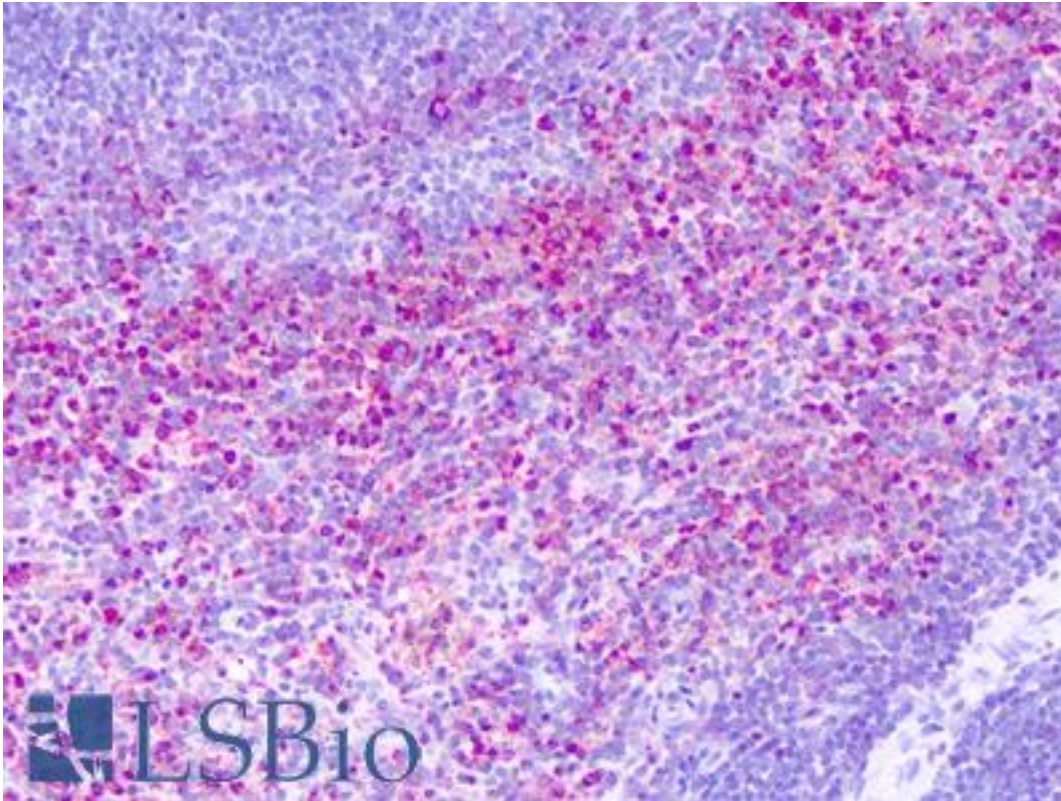
GPR137 Rabbit anti-Human Polyclonal (Cytoplasmic Domain) Antibody - LS-A2053 - LSBio	
CatalogID:	LS-A2053
Target:	G protein-coupled receptor 137 (GPR137)
Synonyms:	GPR137 Antibody, G protein-coupled receptor 137 Antibody, GPR137A Antibody, TM7SF1L1 Antibody, C11orf4 Antibody
Family / Subfamily:	GPCR / Orphan-U
Host	GPR137 antibody was produced in Rabbit
Clonality:	Polyclonal
Immunogen Species:	GPR137 antibody was raised against Human
Antigen Type:	Synthetic peptide
Immunogen:	GPR137 antibody was raised against synthetic 16 amino acid peptide from 2nd cytoplasmic domain of human GPR137. Percent identity with other species by BLAST analysis: Human, Gorilla, Gibbon, Monkey, Marmoset, Mouse, Rat, Dog, Bat, Bovine, Elephant, Panda, Horse, Pig (100%); Hamster (81%).
Specificity:	Human GPR137. BLAST analysis of the peptide immunogen showed no homology with other human proteins.
Epitope:	Cytoplasmic Domain
Reactivity:	Human, Gorilla, Gibbon, Monkey, Mouse, Rat, Bat, Bovine, Dog, Horse, Pig
Purification:	Immunoaffinity purified
Presentation:	PBS, 0.1% sodium azide.
Recommended Storage:	Long term: -70°C; Short term: +4°C
Uses:	IHC - Paraffin (19 µg/ml) (Optimal dilution to be determined by the researcher)
Size:	50 µg
Concentration:	1 mg/ml

Immunohistochemistry Image:



Anti-GPR137 antibody IHC of human brain, cortex, cerebellum. Immunohistochemistry of formalin-fixed, paraffin-embedded tissue after heat-induced antigen retrieval. Antibody LS-A2053 concentration 7 ug/ml.

Immunohistochemistry Image:



Anti-GPR137 antibody IHC of human spleen. Immunohistochemistry of formalin-fixed, paraffin-embedded tissue after heat-induced antigen retrieval. Antibody LS-A2053 concentration 7 ug/ml.

Requested From:

Japan

Laboratory Reagent For In Vitro Research Use Only

Not for resale without prior written consent from LifeSpan BioSciences, Inc.

Created on 9/23/2014

© 2014 LifeSpan BioSciences