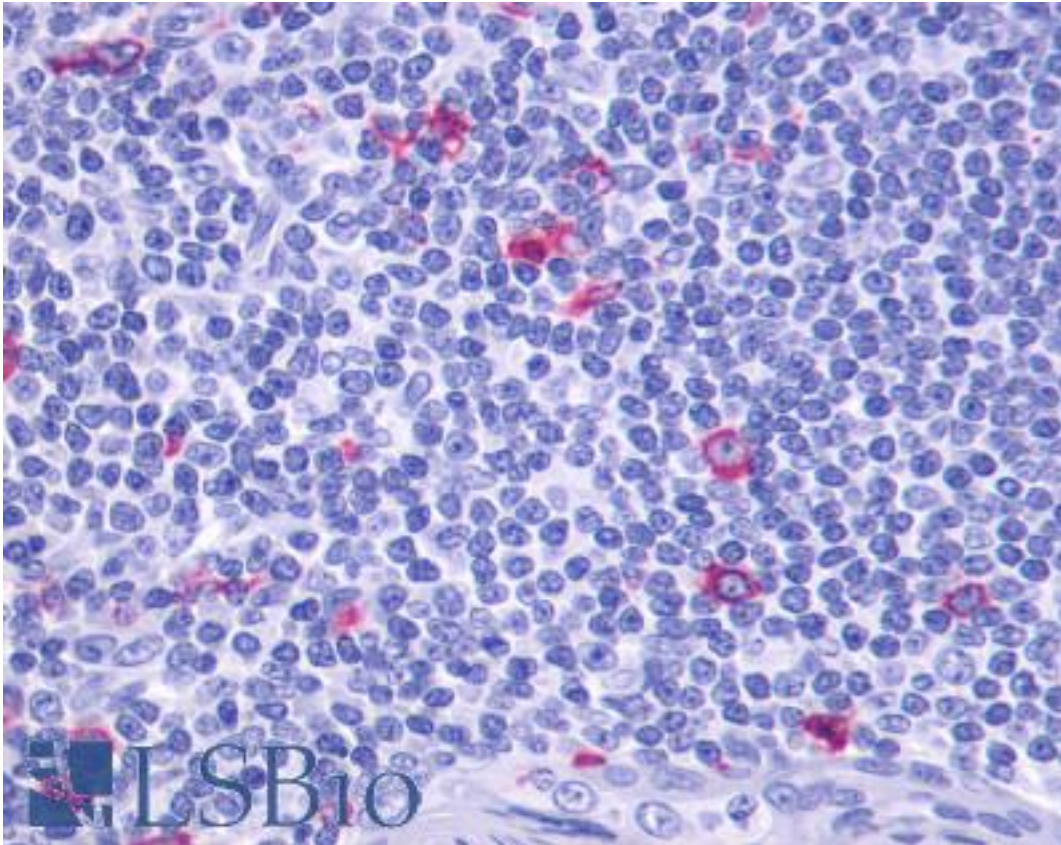


**GPR137 Rabbit anti-Human Polyclonal (Extracellular Domain) Antibody - LS-A2052 - LSBio**

<b>CatalogID:</b>	LS-A2052
<b>Target:</b>	G protein-coupled receptor 137 (GPR137)
<b>Synonyms:</b>	GPR137 Antibody, G protein-coupled receptor 137 Antibody, GPR137A Antibody, TM7SF1L1 Antibody, C11orf4 Antibody
<b>Family / Subfamily:</b>	GPCR / Orphan-U
<b>Host</b>	GPR137 antibody was produced in Rabbit
<b>Clonality:</b>	Polyclonal
<b>Immunogen Species:</b>	GPR137 antibody was raised against Human
<b>Antigen Type:</b>	Synthetic peptide
<b>Immunogen:</b>	GPR137 antibody was raised against synthetic 17 amino acid peptide from 1st extracellular domain of human GPR137. Percent identity with other species by BLAST analysis: Human, Gorilla, Monkey, Marmoset, Mouse, Rat, Dog, Bat, Elephant, Panda, Horse, Pig (100%); Bovine (94%).
<b>Specificity:</b>	Human GPR137. BLAST analysis of the peptide immunogen showed no homology with other human proteins, except GPR137B (53%).
<b>Epitope:</b>	Extracellular Domain
<b>Reactivity:</b>	Human, Gorilla, Monkey, Mouse, Rat, Bat, Dog, Horse, Pig
<b>Predicted Reactivity:</b>	Bovine
<b>Purification:</b>	Immunoaffinity purified
<b>Presentation:</b>	PBS, 0.1% sodium azide.
<b>Recommended Storage:</b>	Long term: -70°C; Short term: +4°C
<b>Uses:</b>	IHC - Paraffin (16 µg/ml) (Optimal dilution to be determined by the researcher)
<b>Size:</b>	50 µg
<b>Concentration:</b>	1 mg/ml

**Immunohistochemistry Image:**



Anti-GPR137 antibody LS-A2052 IHC of human tonsil. Immunohistochemistry of formalin-fixed, paraffin-embedded tissue after heat-induced antigen retrieval.

**Requested From:**

Japan

Laboratory Reagent For In Vitro Research Use Only

Not for resale without prior written consent from LifeSpan BioSciences, Inc.

Created on 9/23/2014

© 2014 LifeSpan BioSciences