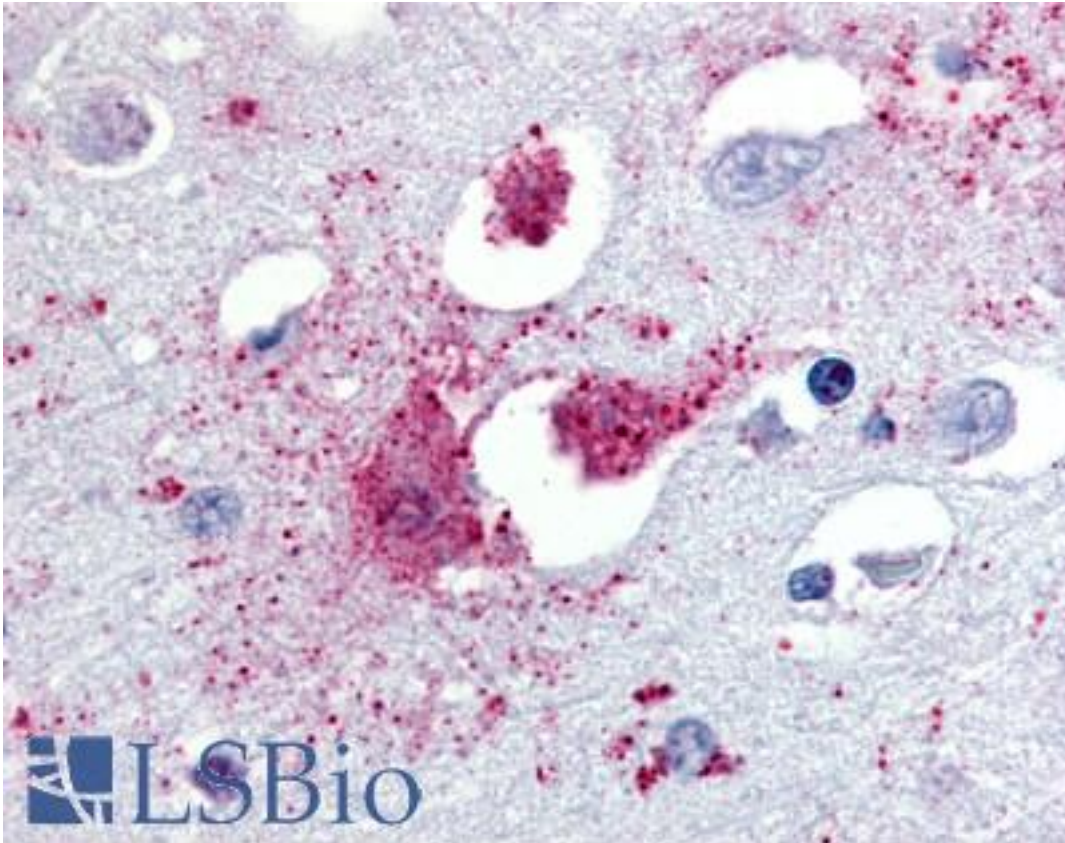


TAAR1 / TA1 Rabbit anti-Human Polyclonal (N-Terminus) Antibody - LS-A2043 - LSBio

CatalogID:	LS-A2043
Target:	trace amine associated receptor 1 (TAAR1)
Synonyms:	TAAR1 Antibody, RP11-295F4.9 Antibody, RTAR1 Antibody, Snorf33 Antibody, TRAR1 Antibody, TaR-1 Antibody, TAR1 Antibody, TA1 Antibody, Trace amine receptor 1 Antibody
Family / Subfamily:	GPCR / Trace amine
Host	TAAR1 antibody was produced in Rabbit
Clonality:	Polyclonal
Immunogen Species:	TAAR1 / TA1 antibody was raised against Human
Antigen Type:	Synthetic peptide
Immunogen:	TAAR1 / TA1 antibody was raised against synthetic 16 amino acid peptide from N-terminus of human TAAR1. Percent identity with other species by BLAST analysis: Human, Chimpanzee, Gibbon, Monkey, Marmoset, Tamarin (100%); Orangutan, Cat, Horse (88%); Bovine, Elephant, Panda, Rabbit, Pig (81%).
Specificity:	Human TAAR1. BLAST analysis of the peptide immunogen showed no homology with other human proteins.
Epitope:	N-Terminus
Reactivity:	Human, Chimpanzee, Gibbon, Monkey
Purification:	Immunoaffinity purified
Presentation:	PBS, 0.1% sodium azide.
Recommended Storage:	Long term: -70°C; Short term: +4°C
Uses:	IHC - Paraffin (1.3 µg/ml) (Optimal dilution to be determined by the researcher)
Size:	50 µg
Concentration:	1 mg/ml

Immunohistochemistry Image:



Anti-TAAR1 antibody LS-A2043 IHC of human brain, amygdala. Immunohistochemistry of formalin-fixed, paraffin-embedded tissue after heat-induced antigen retrieval.

Requested From:

Japan

Laboratory Reagent For In Vitro Research Use Only

Not for resale without prior written consent from LifeSpan BioSciences, Inc.

Created on 9/23/2014

© 2014 LifeSpan BioSciences