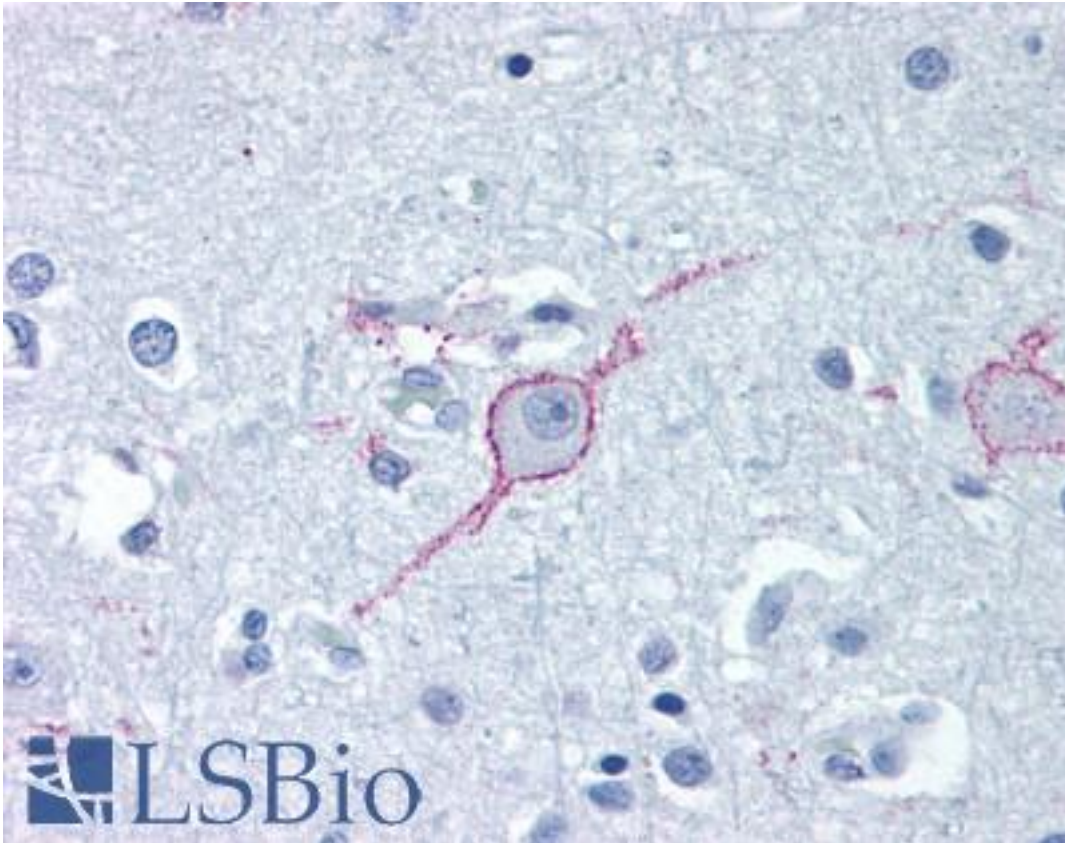


GALR3 / Galanin Receptor 3 Rabbit anti-Human Polyclonal (Extracellular Domain) Antibody - LS-A203 - LSBio	
<b>CatalogID:</b>	LS-A203
<b>Target:</b>	galanin receptor 3 (GALR3)
<b>Synonyms:</b>	GALR3 Antibody, Gal receptor-3 Antibody, Galanin r3 receptor Antibody, Gal-r3 Antibody, Galanin receptor 3 Antibody, Galanin receptor galr3 Antibody, Galanin receptor subtype 3 Antibody, Gal3 receptor Antibody, GAL3-R Antibody, Galanin 2 receptor homolog Antibody, Galanin receptor type 3 Antibody, GALNR3 Antibody, GALR-3 Antibody
<b>Family / Subfamily:</b>	GPCR / Galanin
<b>Host</b>	GALR3 antibody was produced in Rabbit
<b>Clonality:</b>	Polyclonal
<b>Immunogen Species:</b>	GALR3 / Galanin Receptor 3 antibody was raised against Human
<b>Antigen Type:</b>	Synthetic peptide
<b>Immunogen:</b>	GALR3 / Galanin Receptor 3 antibody was raised against synthetic 17 amino acid peptide from 3rd extracellular domain of human GALR3. Percent identity with other species by BLAST analysis: Human, Gorilla, Monkey, Marmoset, Mouse, Rat, Bovine, Pig (100%); Elephant (94%); Dog, Rabbit (88%).
<b>Specificity:</b>	Human GALR3. BLAST analysis of the peptide immunogen showed no homology with other human proteins.
<b>Epitope:</b>	Extracellular Domain
<b>Reactivity:</b>	Human, Gorilla, Monkey, Mouse, Rat, Bovine, Pig
<b>Purification:</b>	Immunoaffinity purified
<b>Presentation:</b>	PBS, 0.1% sodium azide.
<b>Recommended Storage:</b>	Long term: -70°C; Short term: +4°C
<b>Uses:</b>	IHC - Paraffin (28 µg/ml) (Optimal dilution to be determined by the researcher)
<b>Size:</b>	50 µg
<b>Concentration:</b>	1 mg/ml

**Immunohistochemistry Image:**



Anti-GALR3 antibody LS-A203 IHC of human brain, cortex. Immunohistochemistry of formalin-fixed, paraffin-embedded tissue after heat-induced antigen retrieval.

**Requested From:**

Japan

Laboratory Reagent For In Vitro Research Use Only

Not for resale without prior written consent from LifeSpan BioSciences, Inc.

Created on 9/23/2014

© 2014 LifeSpan BioSciences