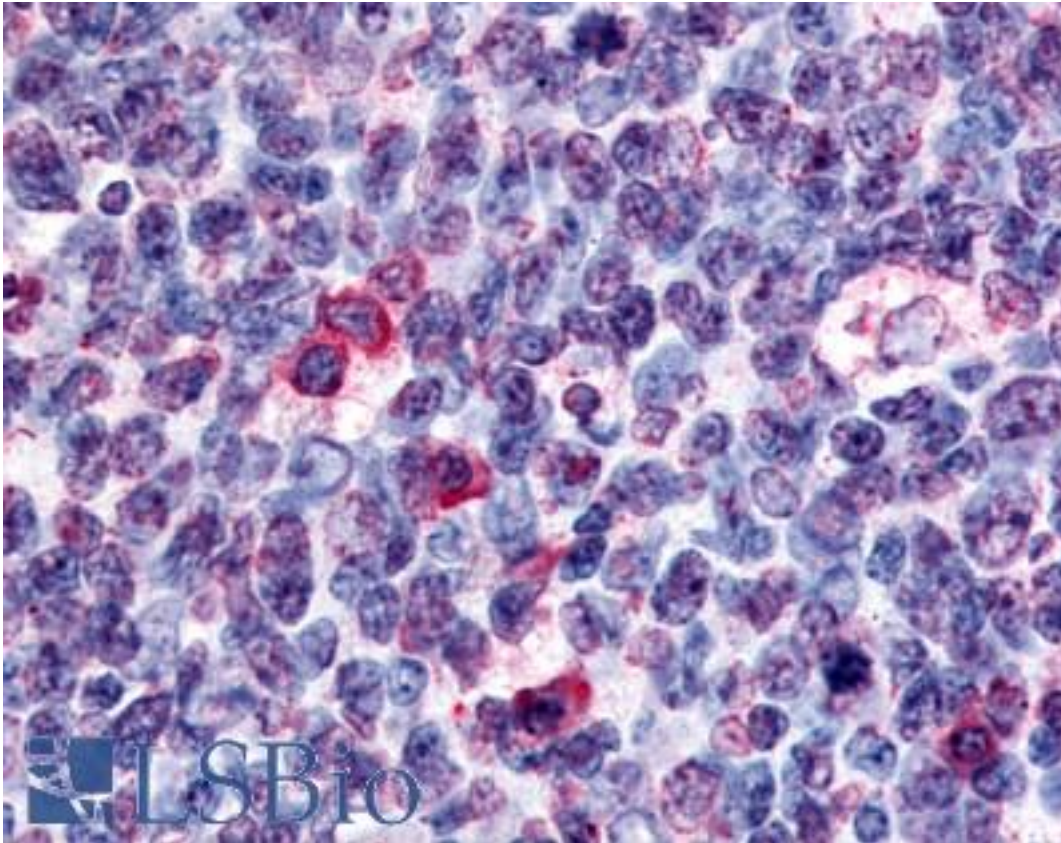


GPR146 Rabbit anti-Human Polyclonal (Cytoplasmic Domain) Antibody - LS-A1986 - LSBio	
<b>CatalogID:</b>	LS-A1986
<b>Target:</b>	G protein-coupled receptor 146 (GPR146)
<b>Synonyms:</b>	GPR146 Antibody, PGR8 Antibody, G protein-coupled receptor 146 Antibody
<b>Family / Subfamily:</b>	GPCR / Orphan-U
<b>Host</b>	GPR146 antibody was produced in Rabbit
<b>Clonality:</b>	Polyclonal
<b>Immunogen Species:</b>	GPR146 antibody was raised against Human
<b>Antigen Type:</b>	Synthetic peptide
<b>Immunogen:</b>	GPR146 antibody was raised against synthetic 19 amino acid peptide from 2nd cytoplasmic domain of human GPR146. Percent identity with other species by BLAST analysis: Human, Gorilla, Gibbon, Monkey, Mouse, Rat, Hamster (100%); Marmoset, Dog, Bovine, Elephant, Horse (95%); Bat, Panda, Pig, Opossum, Turkey, Chicken, Platypus, Pufferfish, Zebrafish, Stickleback (89%).
<b>Specificity:</b>	Human GPR146. BLAST analysis of the peptide immunogen showed no homology with other human proteins.
<b>Epitope:</b>	Cytoplasmic Domain
<b>Reactivity:</b>	Human, Gorilla, Gibbon, Mouse, Rat, Hamster
<b>Predicted Reactivity:</b>	Monkey, Bovine, Dog, Horse
<b>Purification:</b>	Immunoaffinity purified
<b>Presentation:</b>	PBS, 0.1% sodium azide.
<b>Recommended Storage:</b>	Long term: -70°C; Short term: +4°C
<b>Uses:</b>	IHC - Paraffin (25 µg/ml) (Optimal dilution to be determined by the researcher)
<b>Size:</b>	50 µg
<b>Concentration:</b>	1 mg/ml

**Immunohistochemistry Image:**



Anti-GPR146 antibody LS-A1986 IHC of human tonsil germinal center. Immunohistochemistry of formalin-fixed, paraffin-embedded tissue after heat-induced antigen retrieval.

**Requested From:**

Japan

Laboratory Reagent For In Vitro Research Use Only

Not for resale without prior written consent from LifeSpan BioSciences, Inc.

Created on 9/23/2014

© 2014 LifeSpan BioSciences