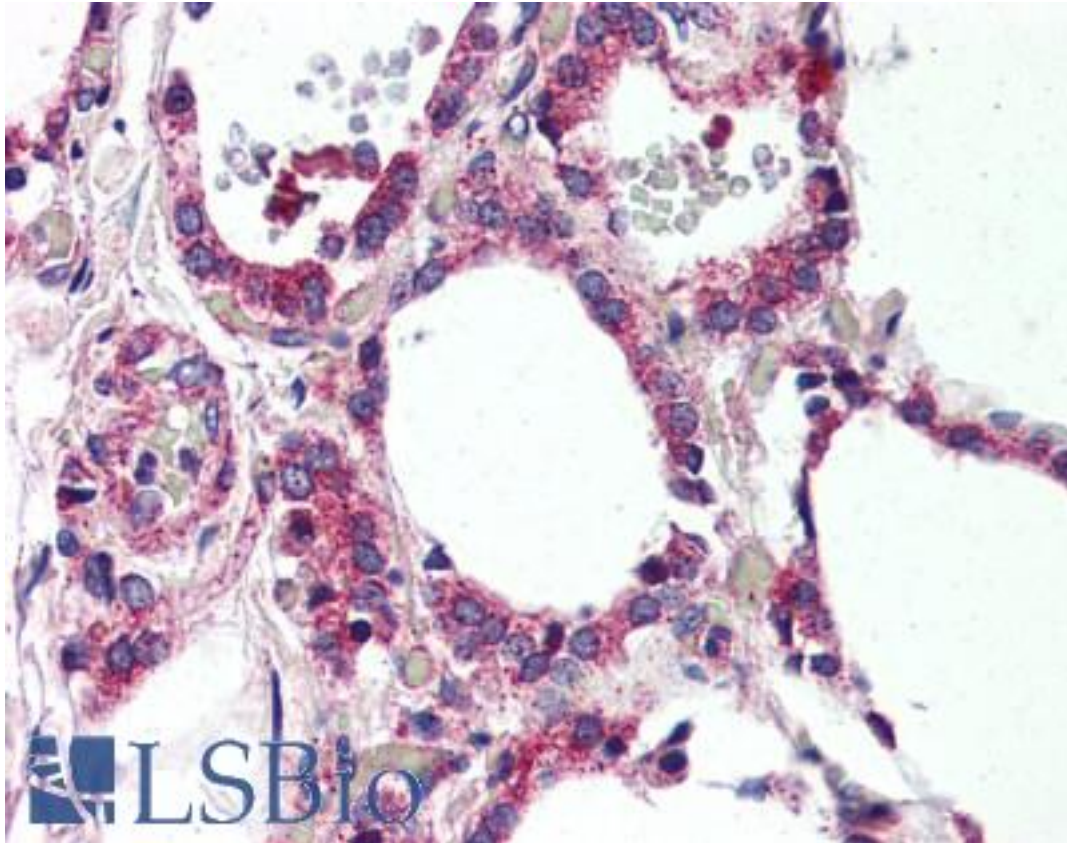


MRGPRF Rabbit anti-Human Polyclonal (N-Terminus) Antibody - LS-A1977 - LSBio

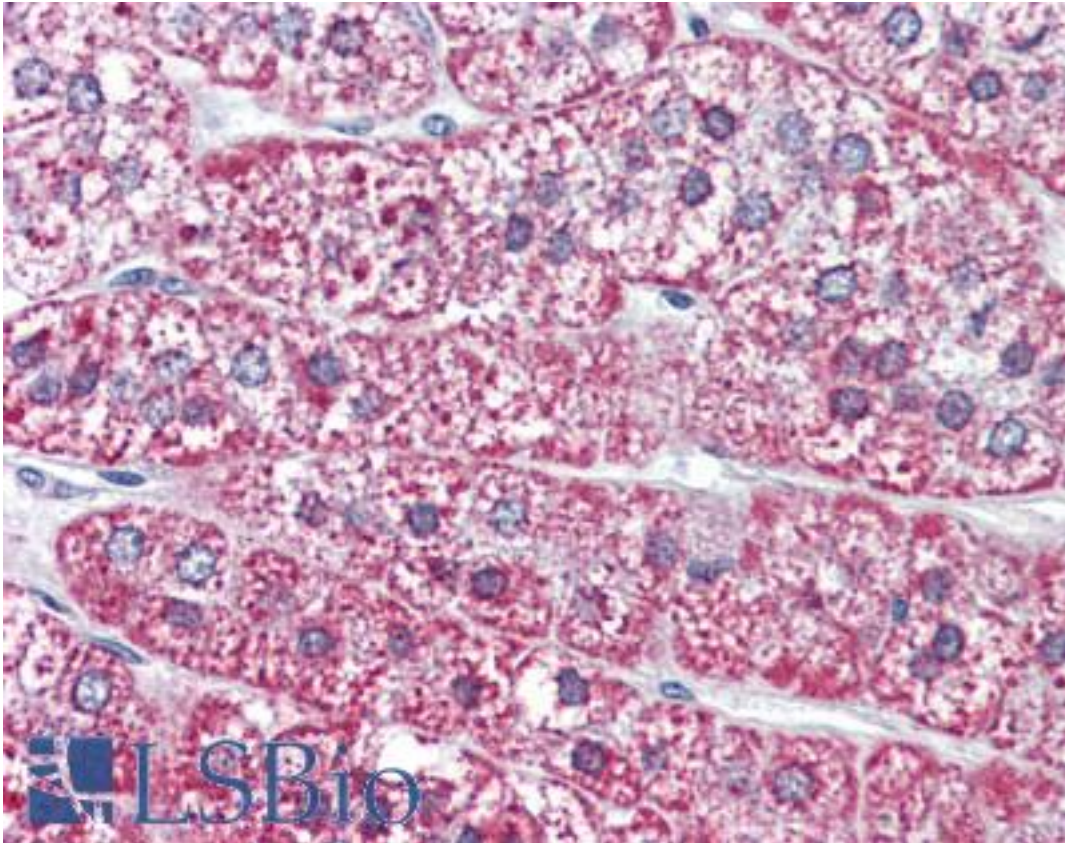
<b>CatalogID:</b>	LS-A1977
<b>Target:</b>	MAS-related GPR, member F (MRGPRF)
<b>Synonyms:</b>	MRGPRF Antibody, G protein-coupled receptor 168 Antibody, G-protein coupled receptor 140 Antibody, G-protein coupled receptor 168 Antibody, GPR140 Antibody, GPR168 Antibody, MRGF Antibody, Mas-related gene F protein Antibody, G protein-coupled receptor 140 Antibody, MAS-related GPR, member F Antibody, RTA Antibody
<b>Family / Subfamily:</b>	GPCR / Orphan-U
<b>Host</b>	MRGPRF antibody was produced in Rabbit
<b>Clonality:</b>	Polyclonal
<b>Immunogen Species:</b>	MRGPRF antibody was raised against Human
<b>Antigen Type:</b>	Synthetic peptide
<b>Immunogen:</b>	MRGPRF antibody was raised against synthetic 18 amino acid peptide from N-Terminus of human MRGPRF. Percent identity with other species by BLAST analysis: Human, Gorilla, Marmoset, Dog, Bovine, Horse (94%); Mouse, Rat, Hamster, Elephant, Panda, Pig (88%).
<b>Specificity:</b>	Human MRGPRF. BLAST analysis of the peptide immunogen showed no homology with other human proteins, except IFRD2 (50%).
<b>Epitope:</b>	N-Terminus
<b>Reactivity:</b>	Human
<b>Predicted Reactivity:</b>	Gorilla, Monkey, Bovine, Dog, Horse
<b>Purification:</b>	Immunoaffinity purified
<b>Presentation:</b>	PBS, 0.1% sodium azide.
<b>Recommended Storage:</b>	Long term: -70°C; Short term: +4°C
<b>Usage Summary:</b>	Immunohistochemistry: LS-A1977 was validated for use in immunohistochemistry on a panel of 21 formalin-fixed, paraffin-embedded (FFPE) human tissues after proteinase K antigen retrieval. After incubation with the primary antibody, slides were incubated with biotinylated secondary antibody, followed by alkaline phosphatase-streptavidin and chromogen. The stained slides were evaluated by a pathologist to confirm staining specificity. The optimal working concentration for LS-A1977 was determined to be 10 ug/ml.
<b>Uses:</b>	IHC - Paraffin (10 µg/ml), ELISA (Optimal dilution to be determined by the researcher)
<b>Size:</b>	50 µg
<b>Concentration:</b>	1 mg/ml

**Immunohistochemistry Image:**



Anti-MRGPRF antibody LS-A1977 IHC of human thyroid. Immunohistochemistry of formalin-fixed, paraffin-embedded tissue after heat-induced antigen retrieval.

**Immunohistochemistry Image:**



Anti-MRGPRF antibody LS-A1977 IHC of human adrenal. Immunohistochemistry of formalin-fixed, paraffin-embedded tissue after heat-induced antigen retrieval.

**Requested From:**

Japan

Laboratory Reagent For In Vitro Research Use Only

Not for resale without prior written consent from LifeSpan BioSciences, Inc.

Created on 9/23/2014

© 2014 LifeSpan BioSciences