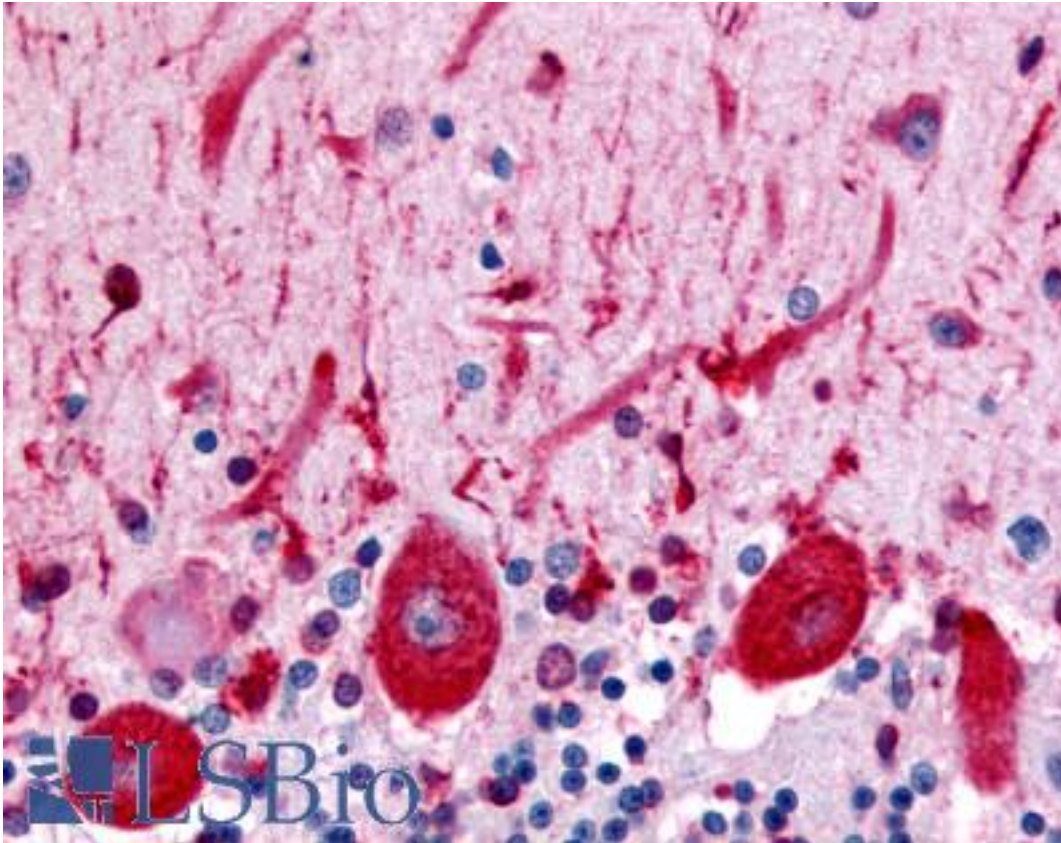


CELSR3 Rabbit anti-Human Polyclonal (N-Terminus) Antibody - LS-A1947 - LSBio

CatalogID:	LS-A1947
Target:	cadherin, EGF LAG seven-pass G-type receptor 3 (CELSR3)
Synonyms:	CELSR3 Antibody, Anchor protein Antibody, Cadherin family member 11 Antibody, CDHF11 Antibody, EGF-like protein 1 Antibody, EGF-like-domain, multiple 1 Antibody, Epidermal growth factor-like 1 Antibody, Flamingo homolog 1 Antibody, FMI1 Antibody, KIAA0812 Antibody, MEGF2 Antibody, Megf3 Antibody, HFMI1 Antibody, Multiple EGF-like domains 2 Antibody, RESDA1 Antibody, EGFL1 Antibody
Family / Subfamily:	GPCR / Orphan-U
Host	CELSR3 antibody was produced in Rabbit
Clonality:	Polyclonal
Immunogen Species:	CELSR3 antibody was raised against Human
Antigen Type:	Synthetic peptide
Immunogen:	CELSR3 antibody was raised against synthetic 20 amino acid peptide from N-terminal extracellular domain of human CELSR3. Percent identity with other species by BLAST analysis: Human, Gorilla, Gibbon, Marmoset, Bovine, Panda (100%); Monkey, Mouse, Rat, Bat, Hamster, Elephant, Horse (95%); Rabbit (90%).
Specificity:	Human CELSR3. BLAST analysis of the peptide immunogen showed no homology with other human proteins.
Epitope:	N-Terminus
Reactivity:	Human, Gorilla, Gibbon, Bovine
Predicted Reactivity:	Monkey, Mouse, Rat, Bat, Hamster, Horse, Rabbit
Purification:	Immunoaffinity purified
Presentation:	PBS, 0.1% sodium azide.
Recommended Storage:	Long term: -70°C; Short term: +4°C
Uses:	IHC - Paraffin (4 - 15 µg/ml) (Optimal dilution to be determined by the researcher)
Size:	50 µg
Concentration:	1 mg/ml

Immunohistochemistry Image:



Anti-CELSR3 antibody LS-A1947 IHC of human brain, Purkinje neurons.
Immunohistochemistry of formalin-fixed, paraffin-embedded tissue after heat-induced antigen retrieval.

Requested From:

Japan

Laboratory Reagent For In Vitro Research Use Only

Not for resale without prior written consent from LifeSpan BioSciences, Inc.

Created on 9/23/2014

© 2014 LifeSpan BioSciences