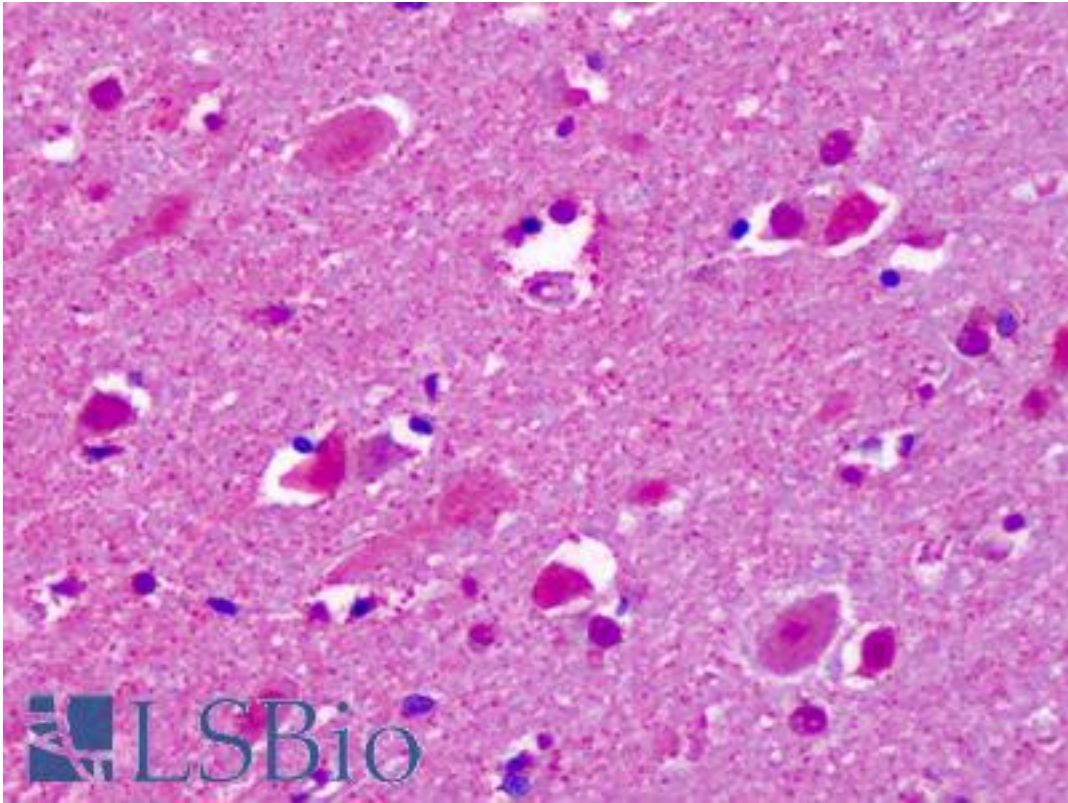


CELSR2 Rabbit anti-Human Polyclonal (C-Terminus) Antibody - LS-A1943 - LSBio

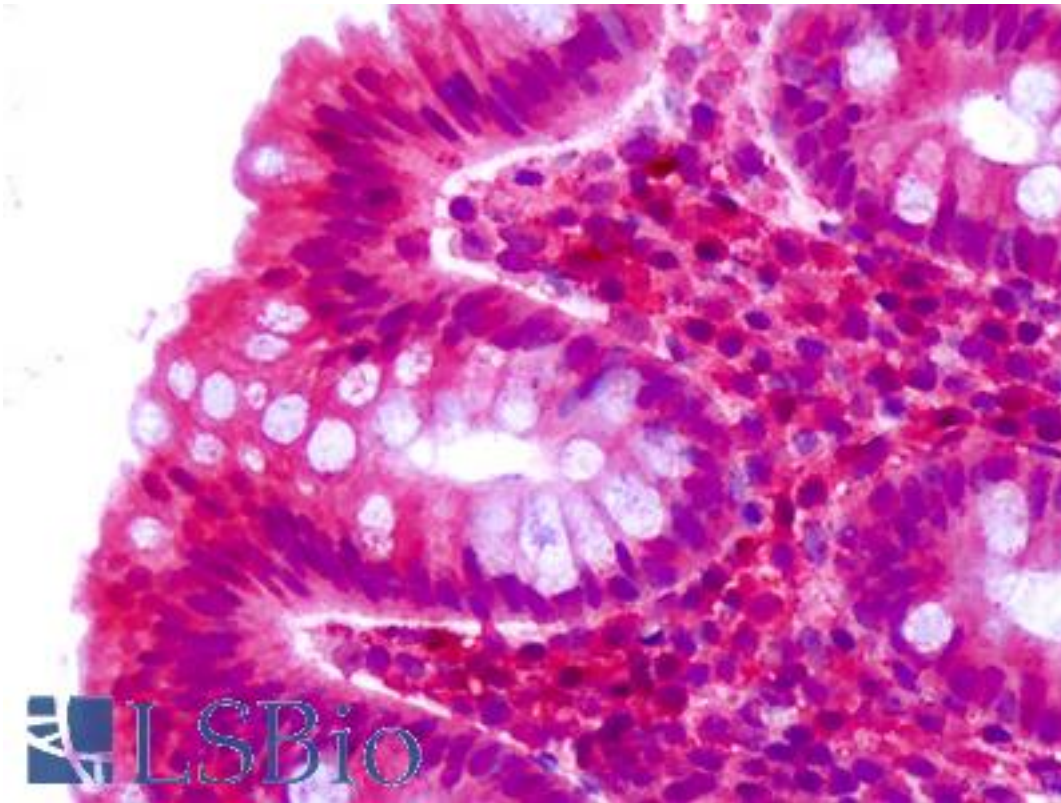
CatalogID:	LS-A1943
Target:	cadherin, EGF LAG seven-pass G-type receptor 2 (CELSR2)
Synonyms:	CELSR2 Antibody, Cadherin family member 10 Antibody, CDHF10 Antibody, EGF-like-domain, multiple 2 Antibody, Epidermal growth factor-like 2 Antibody, EGF-like protein 2 Antibody, EGFL2 Antibody, Flamingo homolog 3 Antibody, KIAA0279 Antibody, Megf3 Antibody, Flamingo1 Antibody
Family / Subfamily:	GPCR / Orphan-U
Host	CELSR2 antibody was produced in Rabbit
Clonality:	Polyclonal
Immunogen Species:	CELSR2 antibody was raised against Human
Antigen Type:	Synthetic peptide
Immunogen:	CELSR2 antibody was raised against synthetic 18 amino acid peptide from C-terminus of human CELSR2 / EGFL2. Percent identity with other species by BLAST analysis: Human, Gibbon, Monkey, Marmoset, Mouse, Rat, Bovine, Dog, Hamster, Elephant, Panda, Horse, Rabbit (100%); Opossum (94%); Lizard (89%).
Specificity:	Human CELSR2 / EGFL2. BLAST analysis of the peptide immunogen showed no homology with other human proteins.
Epitope:	C-Terminus
Reactivity:	Human, Gibbon, Monkey, Mouse, Rat, Bovine, Dog, Hamster, Horse, Rabbit
Purification:	Immunoaffinity purified
Presentation:	PBS, 0.1% sodium azide.
Recommended Storage:	Long term: -70°C; Short term: +4°C
Uses:	IHC - Paraffin (7 µg/ml) (Optimal dilution to be determined by the researcher)
Size:	50 µg
Concentration:	1 mg/ml

Immunohistochemistry Image:



Anti-CELSR2 antibody IHC of human brain, cortex, neurons. Immunohistochemistry of formalin-fixed, paraffin-embedded tissue after heat-induced antigen retrieval. Antibody LS-A1943 dilution 7 ug/ml.

Immunohistochemistry Image:



Anti-CELSR2 antibody IHC of human colon, epithelium. Immunohistochemistry of formalin-fixed, paraffin-embedded tissue after heat-induced antigen retrieval. Antibody LS-A1943 dilution 7 ug/ml.

Requested From:

Japan

Laboratory Reagent For In Vitro Research Use Only

Not for resale without prior written consent from LifeSpan BioSciences, Inc.

Created on 9/23/2014

© 2014 LifeSpan BioSciences