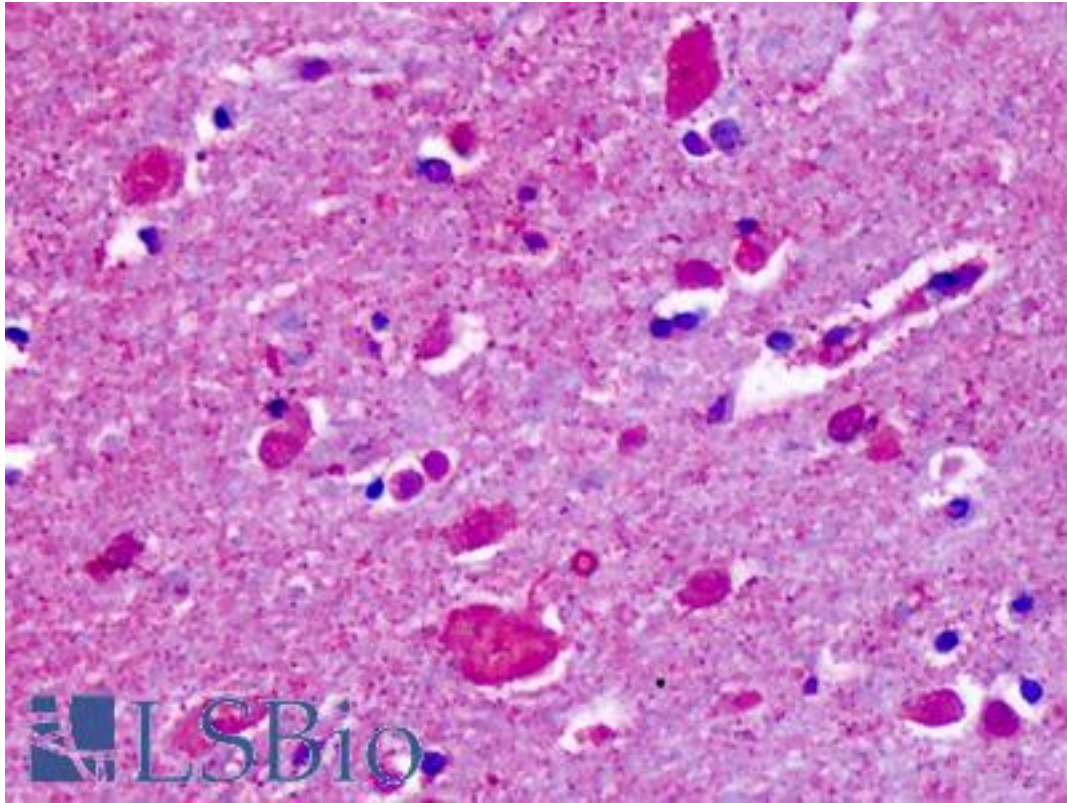


**CELSR2 Rabbit anti-Human Polyclonal (N-Terminus) Antibody - LS-A1939 - LSBio**

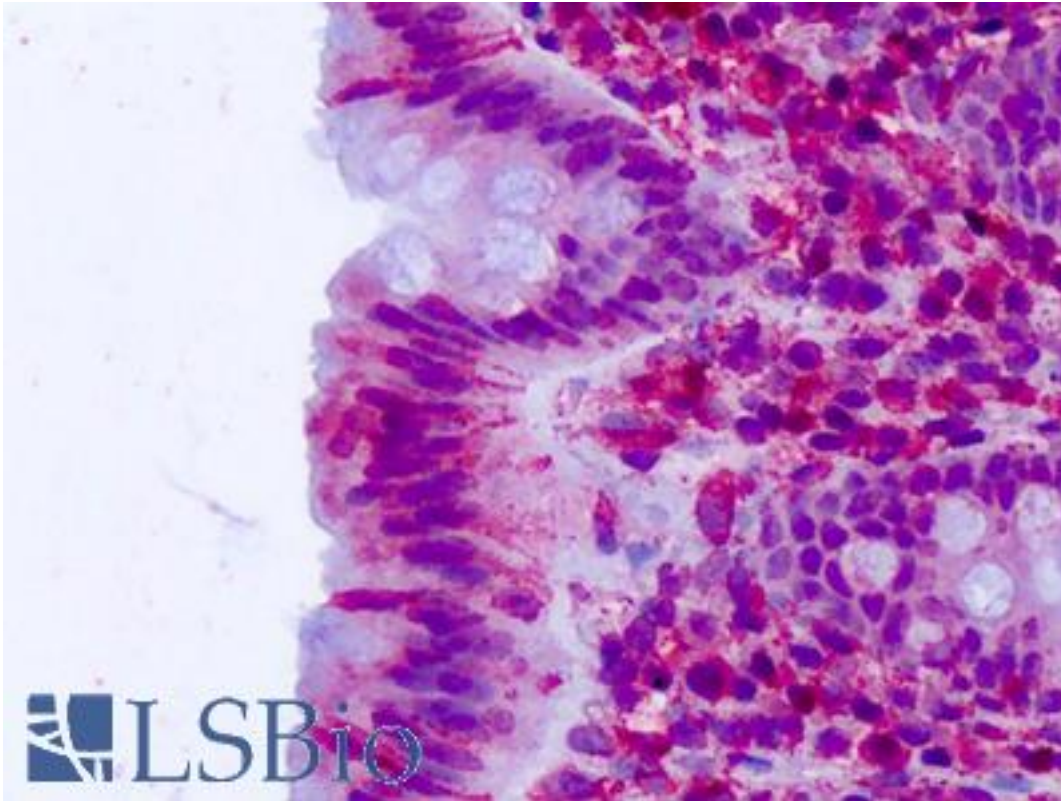
<b>CatalogID:</b>	LS-A1939
<b>Target:</b>	cadherin, EGF LAG seven-pass G-type receptor 2 (CELSR2)
<b>Synonyms:</b>	CELSR2 Antibody, Cadherin family member 10 Antibody, CDHF10 Antibody, EGF-like-domain, multiple 2 Antibody, Epidermal growth factor-like 2 Antibody, EGF-like protein 2 Antibody, EGFL2 Antibody, Flamingo homolog 3 Antibody, KIAA0279 Antibody, Megf3 Antibody, Flamingo1 Antibody
<b>Family / Subfamily:</b>	GPCR / Orphan-U
<b>Host</b>	CELSR2 antibody was produced in Rabbit
<b>Clonality:</b>	Polyclonal
<b>Immunogen Species:</b>	CELSR2 antibody was raised against Human
<b>Antigen Type:</b>	Synthetic peptide
<b>Immunogen:</b>	CELSR2 antibody was raised against synthetic 20 amino acid peptide from N-terminal extracellular domain of human CELSR2 / EGFL2. Percent identity with other species by BLAST analysis: Human, Bovine, Dog, Panda (100%); Elephant, Rabbit (95%); Gibbon, Rat (90%); Mouse (85%).
<b>Specificity:</b>	Human CELSR2 / EGFL2. BLAST analysis of the peptide immunogen showed no homology with other human proteins.
<b>Epitope:</b>	N-Terminus
<b>Reactivity:</b>	Human, Bovine, Dog
<b>Predicted Reactivity:</b>	Gibbon, Rat, Rabbit
<b>Purification:</b>	Immunoaffinity purified
<b>Presentation:</b>	PBS, 0.1% sodium azide.
<b>Recommended Storage:</b>	Long term: -70°C; Short term: +4°C
<b>Uses:</b>	IHC - Paraffin (15 µg/ml) (Optimal dilution to be determined by the researcher)
<b>Size:</b>	50 µg
<b>Concentration:</b>	1 mg/ml

**Immunohistochemistry Image:**



Anti-CELSR2 antibody IHC of human brain, cortex, cerebellum. Immunohistochemistry of formalin-fixed, paraffin-embedded tissue after heat-induced antigen retrieval. Antibody LS-A1939 concentration 3-5 ug/ml.

**Immunohistochemistry Image:**



Anti-CELSR2 antibody IHC of human colon, epithelium. Immunohistochemistry of formalin-fixed, paraffin-embedded tissue after heat-induced antigen retrieval. Antibody LS-A1939 concentration 3-5 ug/ml.

**Requested From:**

Japan

Laboratory Reagent For In Vitro Research Use Only

Not for resale without prior written consent from LifeSpan BioSciences, Inc.

Created on 9/23/2014

© 2014 LifeSpan BioSciences