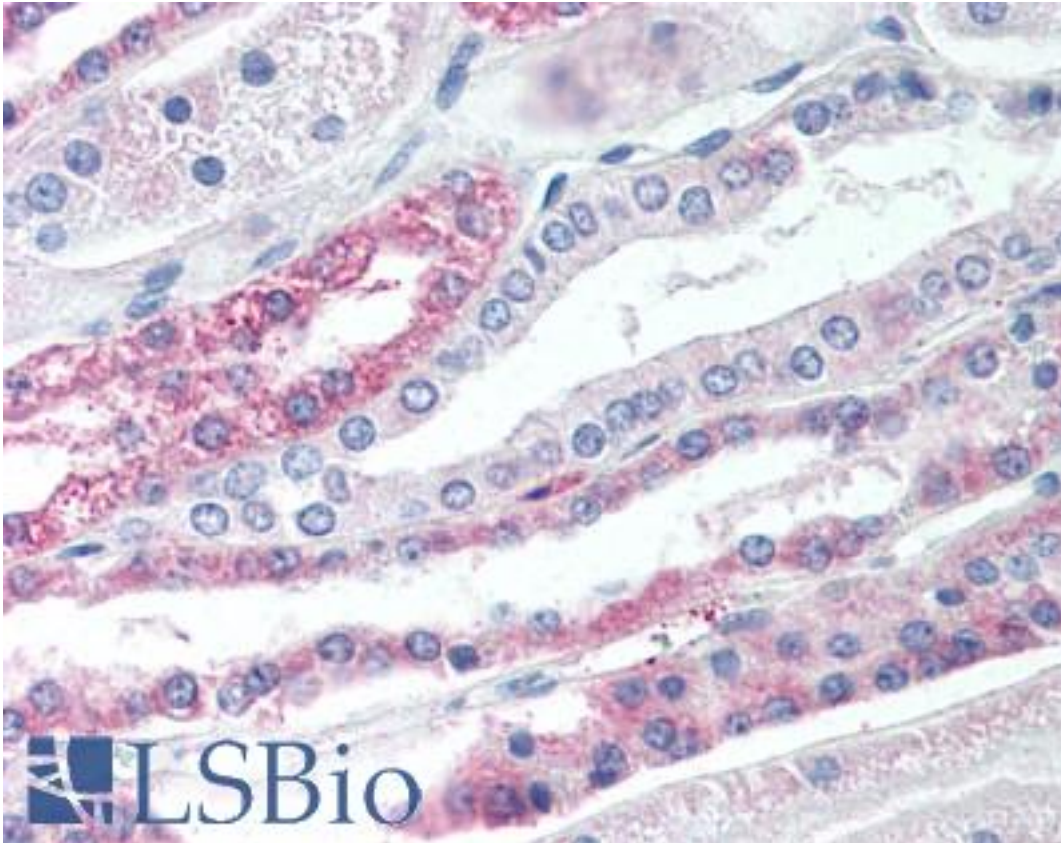


GPBAR1 / TGR5 Rabbit anti-Human Polyclonal (Cytoplasmic Domain) Antibody - LS-A1933 - LSBio	
<b>CatalogID:</b>	LS-A1933
<b>Target:</b>	G protein-coupled bile acid receptor 1 (GPBAR1)
<b>Synonyms:</b>	GPBAR1 Antibody, BG37 Antibody, GPR131 Antibody, HGPCR19 Antibody, M-BAR Antibody, GPCR19 Antibody, TGR5 Antibody, GPCR TGR5 Antibody, HBG37 Antibody, Membrane bile acid receptor Antibody
<b>Family / Subfamily:</b>	GPCR / Bile Acids
<b>Host</b>	GPBAR1 antibody was produced in Rabbit
<b>Clonality:</b>	Polyclonal
<b>Immunogen Species:</b>	GPBAR1 / TGR5 antibody was raised against Human
<b>Antigen Type:</b>	Synthetic peptide
<b>Immunogen:</b>	GPBAR1 / TGR5 antibody was raised against synthetic 16 amino acid peptide from 1st cytoplasmic domain of human TGR5. Percent identity with other species by BLAST analysis: Human, Gorilla, Gibbon, Marmoset, Elephant (100%); Monkey, Rabbit, Horse (94%); Mouse, Bat, Bovine, Hamster (88%); Rat, Dog, Opossum (81%).
<b>Specificity:</b>	Human TGR5. BLAST analysis of the peptide immunogen showed no homology with other human proteins.
<b>Epitope:</b>	Cytoplasmic Domain
<b>Reactivity:</b>	Human, Gorilla, Gibbon
<b>Predicted Reactivity:</b>	Monkey, Horse, Rabbit
<b>Purification:</b>	Immunoaffinity purified
<b>Presentation:</b>	PBS, 0.1% sodium azide.
<b>Recommended Storage:</b>	Long term: -70°C; Short term: +4°C
<b>Uses:</b>	IHC - Paraffin (18 µg/ml) (Optimal dilution to be determined by the researcher)
<b>Size:</b>	50 µg
<b>Concentration:</b>	1 mg/ml

**Immunohistochemistry Image:**



Anti-TGR5 antibody LS-A1933 IHC of human kidney. Immunohistochemistry of formalin-fixed, paraffin-embedded tissue after heat-induced antigen retrieval.

**Requested From:**

Japan

Laboratory Reagent For In Vitro Research Use Only

Not for resale without prior written consent from LifeSpan BioSciences, Inc.

Created on 9/23/2014

© 2014 LifeSpan BioSciences