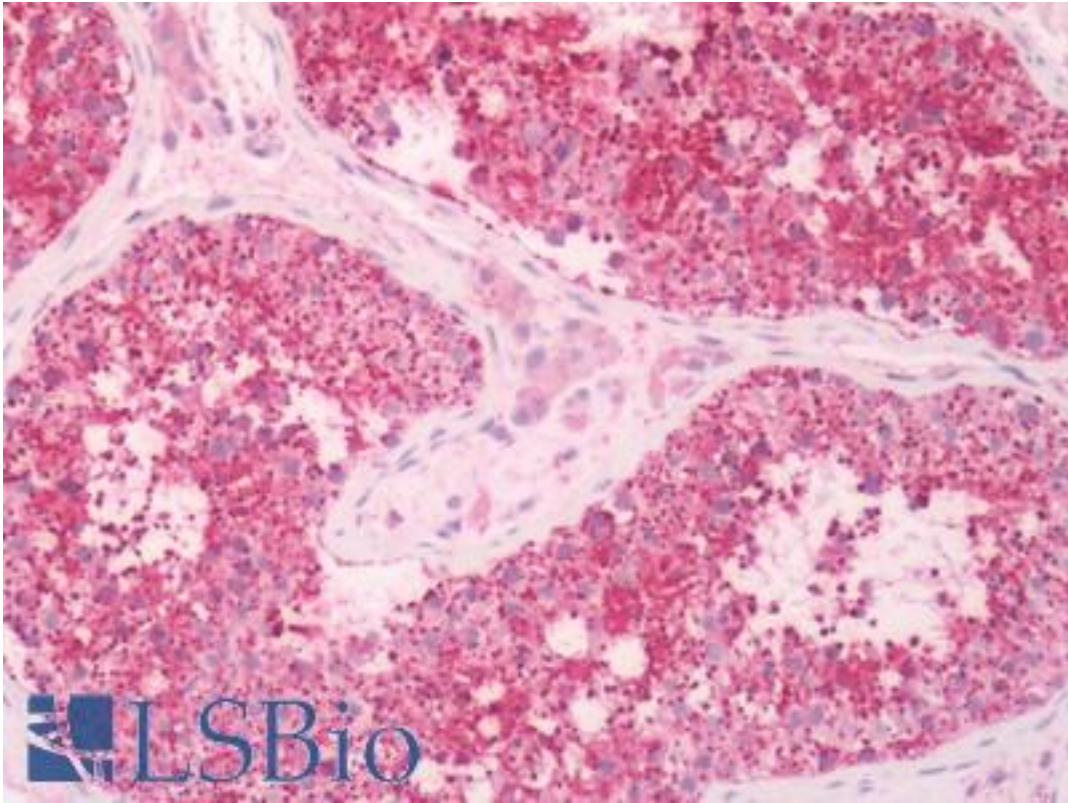


KISS1R / GPR54 Rabbit anti-Human Polyclonal (Extracellular Domain) Antibody - LS-A1926 - LSBio

<b>CatalogID:</b>	LS-A1926
<b>Target:</b>	KISS1 receptor (KISS1R)
<b>Synonyms:</b>	KISS1R Antibody, AXOR12 Antibody, GPR54 Antibody, HOT7T175 Antibody, KISS-1R Antibody, KISS1 receptor Antibody, G protein-coupled receptor 54 Antibody, Metastin receptor Antibody, Rot7t175 Antibody, G-protein coupled receptor 54 Antibody, HH8 Antibody, Hypogonadotropin-1 Antibody, KiSS-1 receptor Antibody, Kisspeptins receptor Antibody
<b>Family / Subfamily:</b>	GPCR / Metastin
<b>Host</b>	KISS1R antibody was produced in Rabbit
<b>Clonality:</b>	Polyclonal
<b>Immunogen Species:</b>	KISS1R / GPR54 antibody was raised against Human
<b>Antigen Type:</b>	Synthetic peptide
<b>Immunogen:</b>	KISS1R / GPR54 antibody was raised against synthetic 17 amino acid peptide from 2nd extracellular domain of human KISS1R / GPR54. Percent identity with other species by BLAST analysis: Human, Gorilla, Gibbon, Monkey, Mouse, Rat, Bovine, Dog, Bat, Hamster, Pig (100%); Goat, Elephant, Panda (94%).
<b>Specificity:</b>	Human KISS1R / GPR54. BLAST analysis of the peptide immunogen showed no homology with other human proteins.
<b>Epitope:</b>	Extracellular Domain
<b>Reactivity:</b>	Human, Gorilla, Gibbon, Monkey, Mouse, Rat, Bat, Bovine, Dog, Hamster, Pig
<b>Predicted Reactivity:</b>	Goat
<b>Purification:</b>	Immunoaffinity purified
<b>Presentation:</b>	PBS, 0.1% sodium azide.
<b>Recommended Storage:</b>	Long term: -70°C; Short term: +4°C
<b>Uses:</b>	IHC - Paraffin (10 - 20 µg/ml) (Optimal dilution to be determined by the researcher)
<b>Size:</b>	50 µg
<b>Concentration:</b>	1 mg/ml

**Immunohistochemistry Image:**



Human Testis: Formalin-Fixed, Paraffin-Embedded (FFPE)

**Requested From:**

Japan

Laboratory Reagent For In Vitro Research Use Only

Not for resale without prior written consent from LifeSpan BioSciences, Inc.

Created on 9/23/2014

© 2014 LifeSpan BioSciences