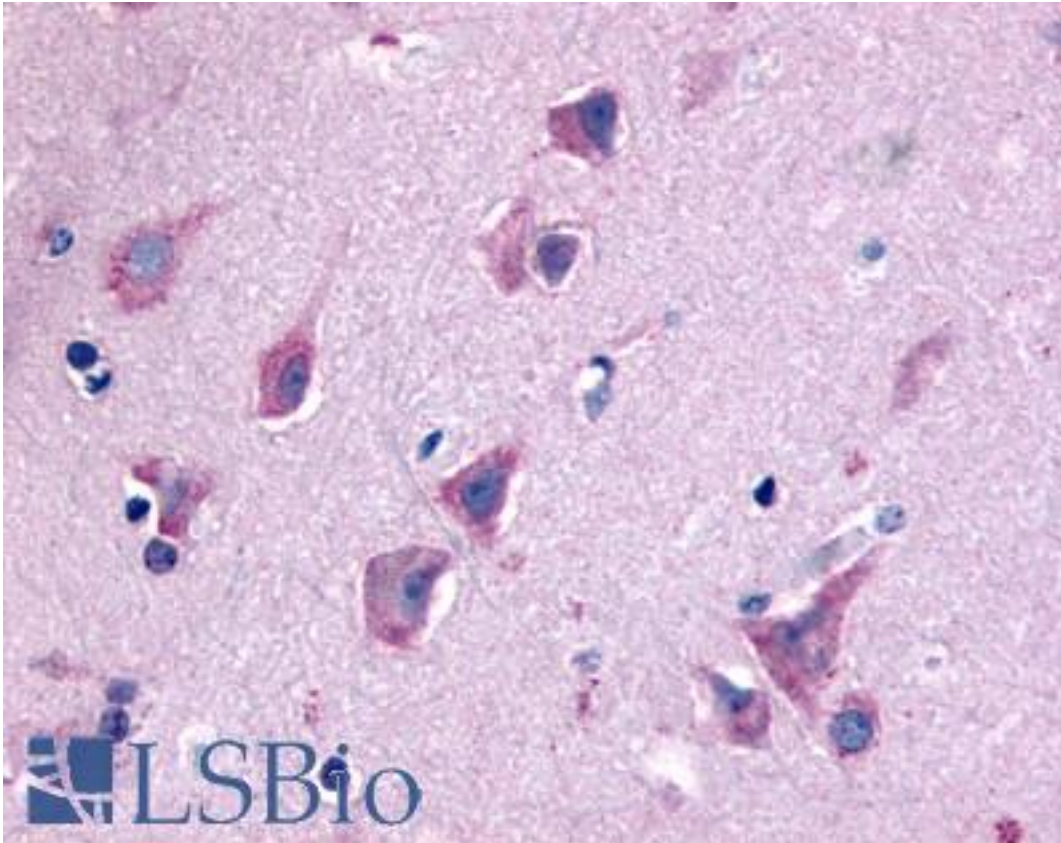


QRFPR / GPR103 Rabbit anti-Human Polyclonal (N-Terminus) Antibody - LS-A1925 - LSBio	
CatalogID:	LS-A1925
Target:	pyroglutamylated RFamide peptide receptor (QRFPR)
Synonyms:	QRFPR Antibody, AQ27 Antibody, G protein-coupled receptor 103 Antibody, QRFPR receptor Antibody, SP9155 Antibody, G-protein coupled receptor 103 Antibody, GPR103 Antibody
Family / Subfamily:	GPCR / Orphan-U
Host	QRFPR antibody was produced in Rabbit
Clonality:	Polyclonal
Immunogen Species:	QRFPR / GPR103 antibody was raised against Human
Antigen Type:	Synthetic peptide
Immunogen:	QRFPR / GPR103 antibody was raised against synthetic 20 amino acid peptide from N-Terminus of human QRFPR / GPR103. Percent identity with other species by BLAST analysis: Human, Gorilla, Gibbon, Marmoset, Bovine, Horse, Rabbit, Pig (100%); Monkey, Rat, Dog, Elephant (95%); Mouse, Panda (90%); Bat, Turkey, Zebra finch, Chicken, Platypus, Xenopus (85%); Opossum (80%).
Specificity:	Human QRFPR / GPR103. BLAST analysis of the peptide immunogen showed no homology with other human proteins.
Epitope:	N-Terminus
Reactivity:	Human, Gorilla, Gibbon, Bovine, Horse, Pig, Rabbit
Predicted Reactivity:	Monkey, Mouse, Rat, Dog
Purification:	Immunoaffinity purified
Presentation:	PBS, 0.1% sodium azide.
Recommended Storage:	Long term: -70°C; Short term: +4°C
Uses:	IHC - Paraffin (8 µg/ml) (Optimal dilution to be determined by the researcher)
Size:	50 µg
Concentration:	1 mg/ml

Immunohistochemistry Image:



Anti-QRFPR / GPR103 antibody LS-A1925 IHC of human brain, neurons and glia.
Immunohistochemistry of formalin-fixed, paraffin-embedded tissue after heat-induced antigen retrieval.

Requested From:

Japan

Laboratory Reagent For In Vitro Research Use Only

Not for resale without prior written consent from LifeSpan BioSciences, Inc.

Created on 9/23/2014

© 2014 LifeSpan BioSciences