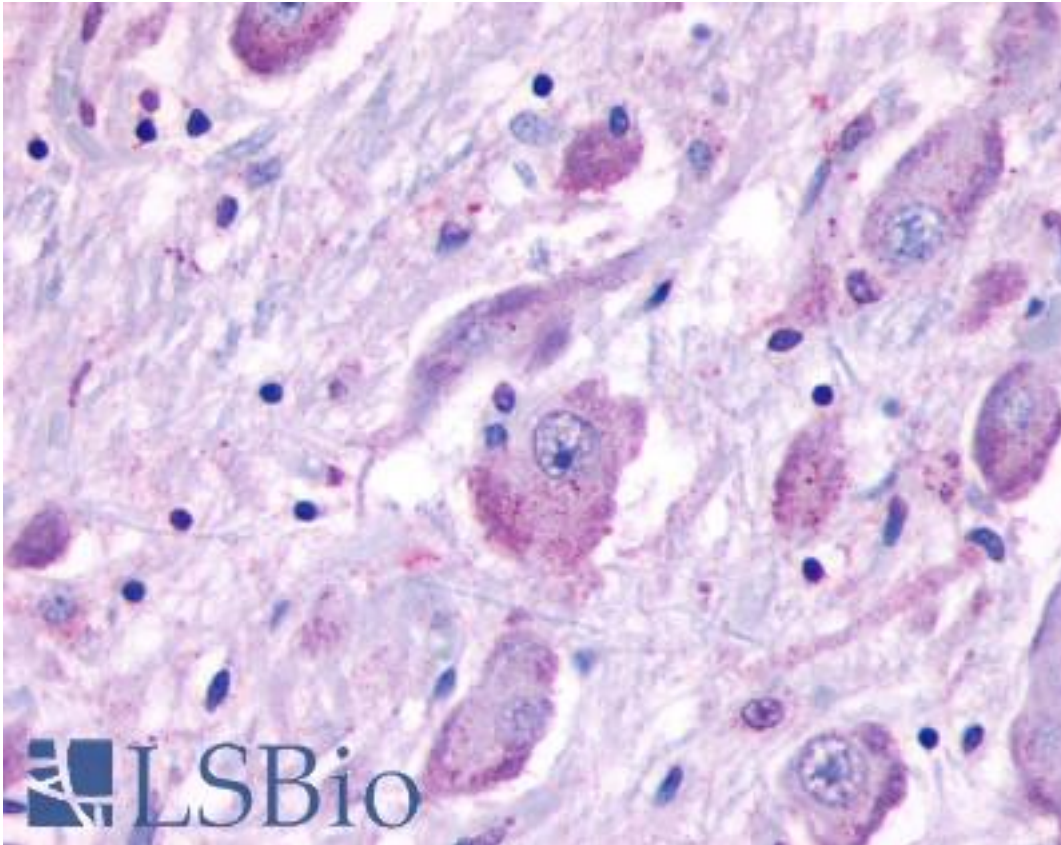


CELSR1 Rabbit anti-Human Polyclonal (N-Terminus) Antibody - LS-A1909 - LSBio	
CatalogID:	LS-A1909
Target:	cadherin, EGF LAG seven-pass G-type receptor 1 (CELSR1)
Synonyms:	CELSR1 Antibody, Cadherin family member 9 Antibody, CDHF9 Antibody, Flamingo homolog 2 Antibody, FMI2 Antibody, HFMI2 Antibody, Protocadherin flamingo 2 Antibody
Family / Subfamily:	GPCR / Orphan-U
Host	CELSR1 antibody was produced in Rabbit
Clonality:	Polyclonal
Immunogen Species:	CELSR1 antibody was raised against Human
Antigen Type:	Synthetic peptide
Immunogen:	CELSR1 antibody was raised against synthetic 20 amino acid peptide from N-terminal extracellular domain of human CELSR1. Percent identity with other species by BLAST analysis: Human (100%); Monkey (85%).
Specificity:	Human CELSR1. BLAST analysis of the peptide immunogen showed no homology with other human proteins.
Epitope:	N-Terminus
Reactivity:	Human
Purification:	Immunoaffinity purified
Presentation:	PBS, 0.1% sodium azide.
Recommended Storage:	Long term: -70°C; Short term: +4°C
Uses:	IHC - Paraffin (8 - 15 µg/ml) (Optimal dilution to be determined by the researcher)
Size:	50 µg
Concentration:	1 mg/ml

Immunohistochemistry Image:



Anti-CELSR1 antibody LS-A1909 IHC of human brain. Immunohistochemistry of formalin-fixed, paraffin-embedded tissue after heat-induced antigen retrieval.

Requested From:

Japan

Laboratory Reagent For In Vitro Research Use Only

Not for resale without prior written consent from LifeSpan BioSciences, Inc.

Created on 9/23/2014

© 2014 LifeSpan BioSciences