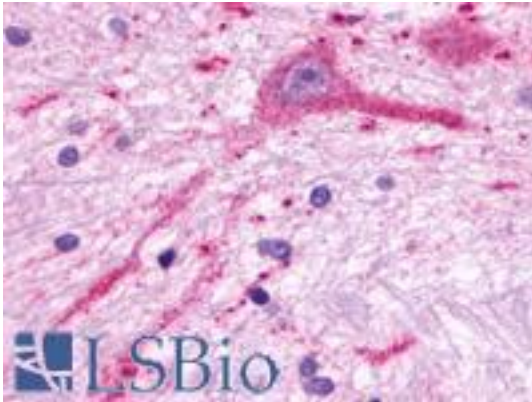


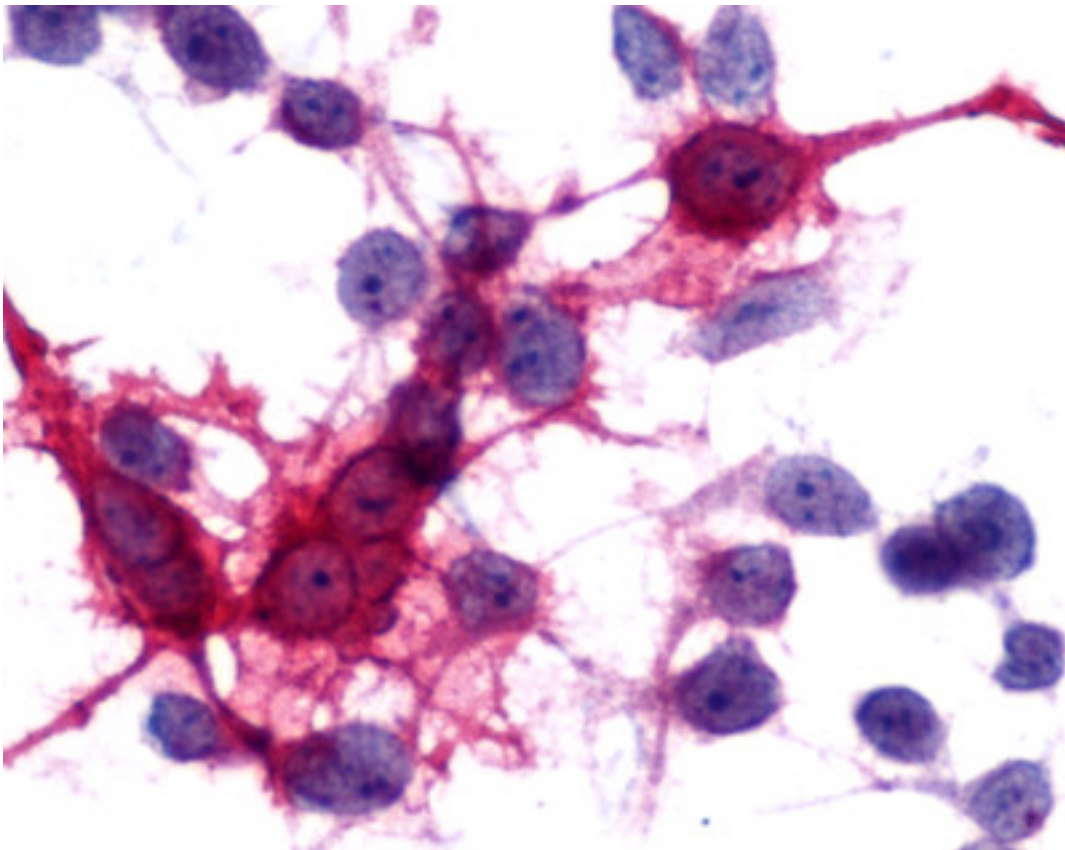
**MCHR2 Rabbit anti-Human Polyclonal (C-Terminus) Antibody - LS-A1907 - LSBio**

<b>CatalogID:</b>	LS-A1907
<b>Target:</b>	melanin-concentrating hormone receptor 2 (MCHR2)
<b>Synonyms:</b>	MCHR2 Antibody, G protein-coupled receptor slt Antibody, GPRv17 Antibody, GPR145 Antibody, G protein-coupled receptor 145 Antibody, G-protein coupled receptor 145 Antibody, MCH receptor 2 Antibody, MCHR-2 Antibody, MCH-2R Antibody, MCH-R2 Antibody, MCH2 Antibody, Mch2 receptor Antibody, SLT receptor Antibody, MCH2R Antibody, SLT Antibody
<b>Family / Subfamily:</b>	GPCR / Melanin-concentrating hormone receptor
<b>Host</b>	MCHR2 antibody was produced in Rabbit
<b>Clonality:</b>	Polyclonal
<b>Immunogen Species:</b>	MCHR2 antibody was raised against Human
<b>Antigen Type:</b>	Synthetic peptide
<b>Immunogen:</b>	MCHR2 antibody was raised against synthetic 19 amino acid peptide from C-terminus of human MCHR2. Percent identity with other species by BLAST analysis: Human (100%); Gorilla (95%); Gibbon (89%); Monkey, Marmoset (84%).
<b>Specificity:</b>	Human MCHR2. BLAST analysis of the peptide immunogen showed no homology with other human proteins.
<b>Epitope:</b>	C-Terminus
<b>Reactivity:</b>	Human
<b>Predicted Reactivity:</b>	Gorilla
<b>Purification:</b>	Immunoaffinity purified
<b>Presentation:</b>	PBS, 0.1% sodium azide.
<b>Recommended Storage:</b>	Long term: -70°C; Short term: +4°C
<b>Uses:</b>	IHC - Paraffin (21 µg/ml), ICC (10 - 20 µg/ml) (Optimal dilution to be determined by the researcher)
<b>Size:</b>	50 µg
<b>Concentration:</b>	1 mg/ml

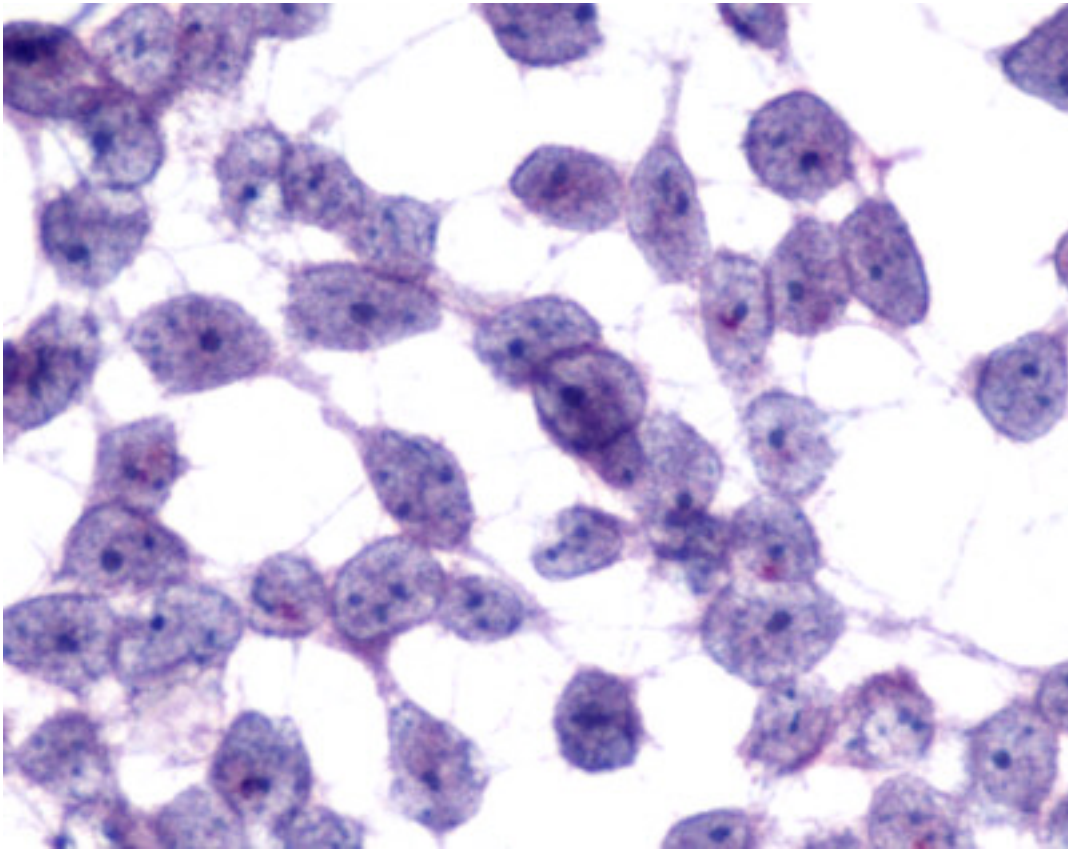
**Immunohistochemistry Image:**



Anti-MCHR2 antibody LS-A1907 IHC of human brain, neurons. Immunohistochemistry of formalin-fixed, paraffin-embedded tissue after heat-induced antigen retrieval.



Cells expressing vector only - immunostained with target antibody



Cells expressing vector only - immunostained with target antibody

**Requested From:**

Japan

Laboratory Reagent For In Vitro Research Use Only

Not for resale without prior written consent from LifeSpan BioSciences, Inc.

Created on 9/23/2014

© 2014 LifeSpan BioSciences