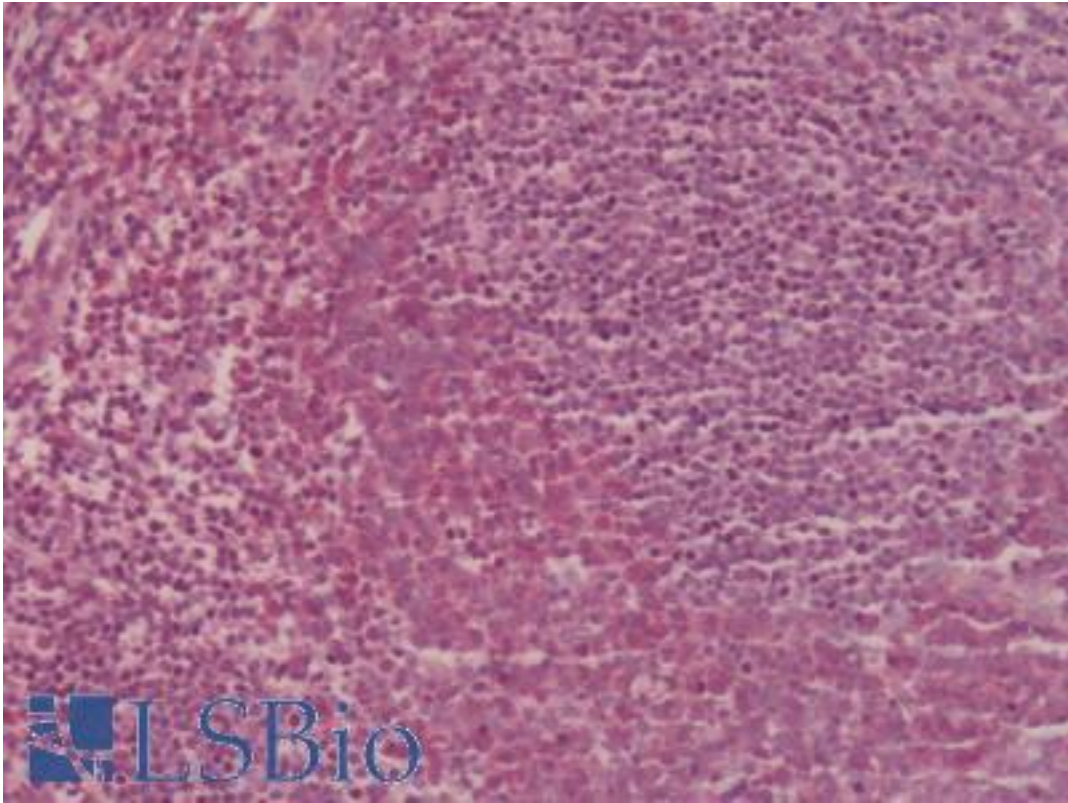


CCR2 Rabbit anti-Human Polyclonal (Extracellular Domain) Antibody - LS-A1898 - LSBio

CatalogID:	LS-A1898
Target:	chemokine (C-C motif) receptor 2 (CCR2)
Synonyms:	CCR2 Antibody, C-C chemokine receptor type 2 Antibody, CD192 Antibody, Cc chemokine receptor 2 Antibody, CCR-2 Antibody, CCR2A Antibody, C-C CKR-2 Antibody, CKR2 Antibody, CD192 antigen Antibody, CKR2A Antibody, CKR2B Antibody, Mcp1 receptor Antibody, MCP-1 receptor Antibody, MCP-1-R Antibody, C-c chemokine receptor 2 Antibody, CC-CKR-2 Antibody, Cc-ckr2 Antibody, CCR2B Antibody, CMKBR2 Antibody, Mcp1r Antibody
Family / Subfamily:	GPCR / Chemokine
Host	CCR2 antibody was produced in Rabbit
Clonality:	Polyclonal
Immunogen Species:	CCR2 antibody was raised against Human
Antigen Type:	Synthetic peptide
Immunogen:	CCR2 antibody was raised against synthetic 20 amino acid peptide from 2nd extracellular domain of human CCR2. Percent identity with other species by BLAST analysis: Human, Gorilla (100%); Gibbon (95%); Monkey (90%).
Specificity:	Human CCR2. BLAST analysis of the peptide immunogen showed no homology with other human proteins.
Epitope:	Extracellular Domain
Reactivity:	Human, Gorilla
Predicted Reactivity:	Gibbon, Monkey
Purification:	Immunoaffinity purified
Presentation:	PBS, 0.1% sodium azide.
Recommended Storage:	Long term: -70°C; Short term: +4°C
Uses:	IHC - Paraffin (15 - 20 µg/ml) (Optimal dilution to be determined by the researcher)
Size:	50 µg
Concentration:	1 mg/ml

Immunohistochemistry Image:



Human Tonsil: Formalin-Fixed, Paraffin-Embedded (FFPE)

Requested From:

Japan

Laboratory Reagent For In Vitro Research Use Only

Not for resale without prior written consent from LifeSpan BioSciences, Inc.

Created on 9/23/2014

© 2014 LifeSpan BioSciences