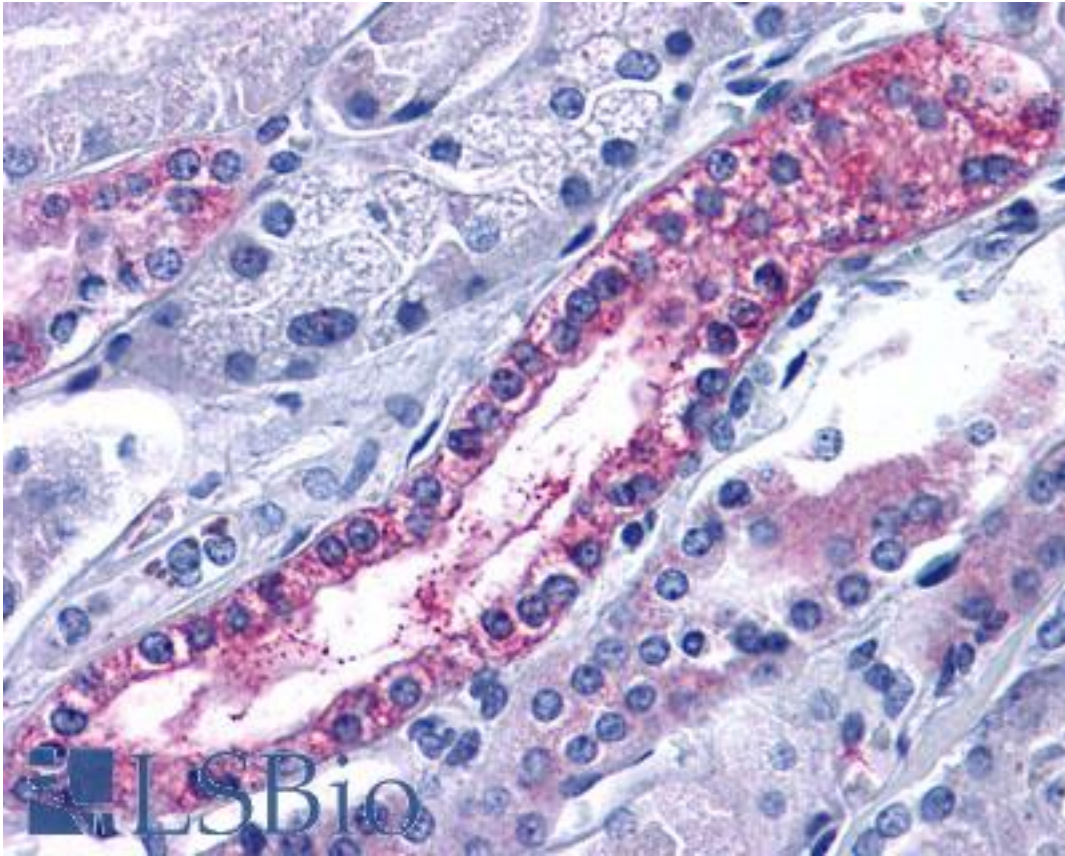


ACKR3 / CXCR7 / RDC1 Rabbit anti-Human Polyclonal (Extracellular Domain) Antibody - LS-A1893 - LSBio	
<b>CatalogID:</b>	LS-A1893
<b>Target:</b>	atypical chemokine receptor 3 (ACKR3)
<b>Synonyms:</b>	ACKR3 Antibody, Chemokine orphan receptor 1 Antibody, CMKOR1 Antibody, CXCR7 Antibody, CXC-R7 Antibody, GPRN1 Antibody, RDC1 Antibody, RDC-1 Antibody, CXCR-7 Antibody, G-protein coupled receptor 159 Antibody, GPR159 Antibody
<b>Family / Subfamily:</b>	GPCR / Chemokine
<b>Host</b>	ACKR3 antibody was produced in Rabbit
<b>Clonality:</b>	Polyclonal
<b>Immunogen Species:</b>	ACKR3 / CXCR7 / RDC1 antibody was raised against Human
<b>Antigen Type:</b>	Synthetic peptide
<b>Immunogen:</b>	ACKR3 / CXCR7 / RDC1 antibody was raised against synthetic 19 amino acid peptide from 2nd extracellular domain of human CXCR7. Percent identity with other species by BLAST analysis: Human, Gorilla, Gibbon, Monkey, Mouse, Rat, Bovine, Bat, Dog, Hamster, Panda, Horse, Rabbit, Pig (100%); Marmoset, Elephant (95%); Opossum, Platypus (84%).
<b>Specificity:</b>	Human CXCR7. BLAST analysis of the peptide immunogen showed no homology with other human proteins.
<b>Epitope:</b>	Extracellular Domain
<b>Reactivity:</b>	Human, Gorilla, Gibbon, Mouse, Rat, Bat, Bovine, Dog, Hamster, Horse, Pig, Rabbit
<b>Predicted Reactivity:</b>	Monkey
<b>Purification:</b>	Immunoaffinity purified
<b>Presentation:</b>	PBS, 0.1% sodium azide.
<b>Recommended Storage:</b>	Long term: -70°C; Short term: +4°C
<b>Uses:</b>	IHC - Paraffin (10 µg/ml), Flow Cytometry (Optimal dilution to be determined by the researcher)
<b>Size:</b>	50 µg
<b>Concentration:</b>	1 mg/ml

**Immunohistochemistry Image:**



Anti-CXCR7 antibody LS-A1893 IHC of human kidney, renal tubule. Immunohistochemistry of formalin-fixed, paraffin-embedded tissue after heat-induced antigen retrieval.

**Requested From:**

Japan

Laboratory Reagent For In Vitro Research Use Only

Not for resale without prior written consent from LifeSpan BioSciences, Inc.

Created on 9/23/2014

© 2014 LifeSpan BioSciences