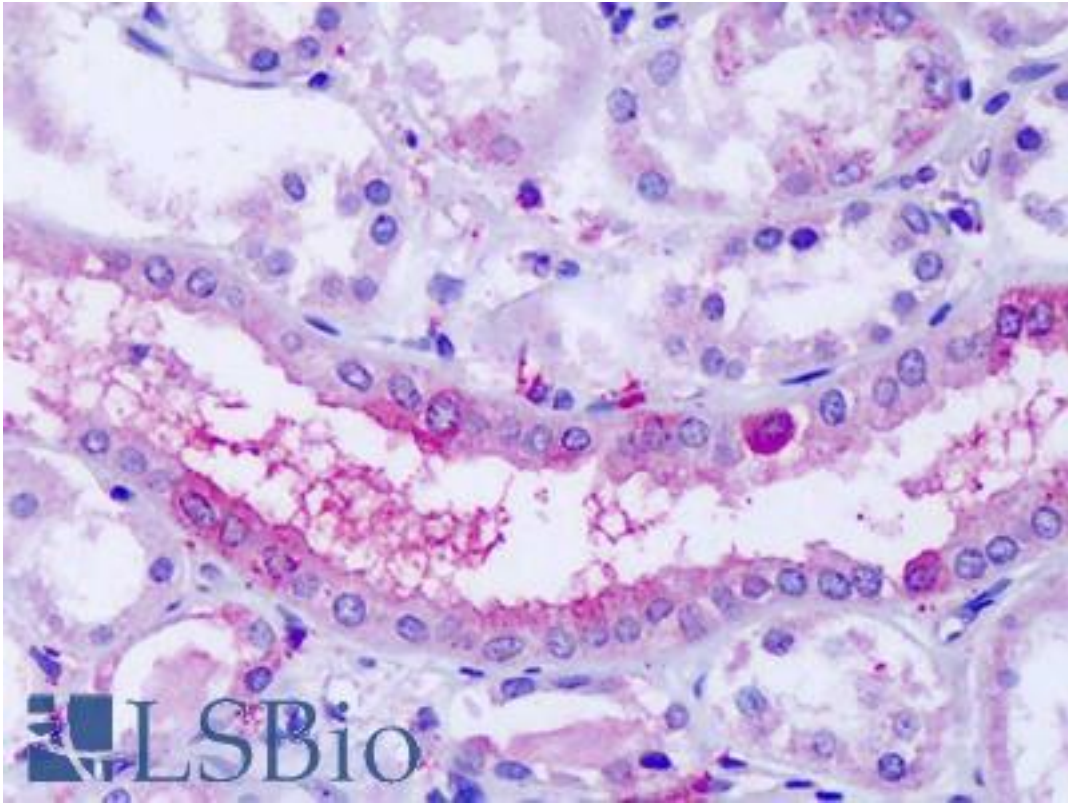


GPR80 / GPR99 / OXGR1 Rabbit anti-Human Polyclonal (Extracellular Domain) Antibody - LS-A1865 - LSBio

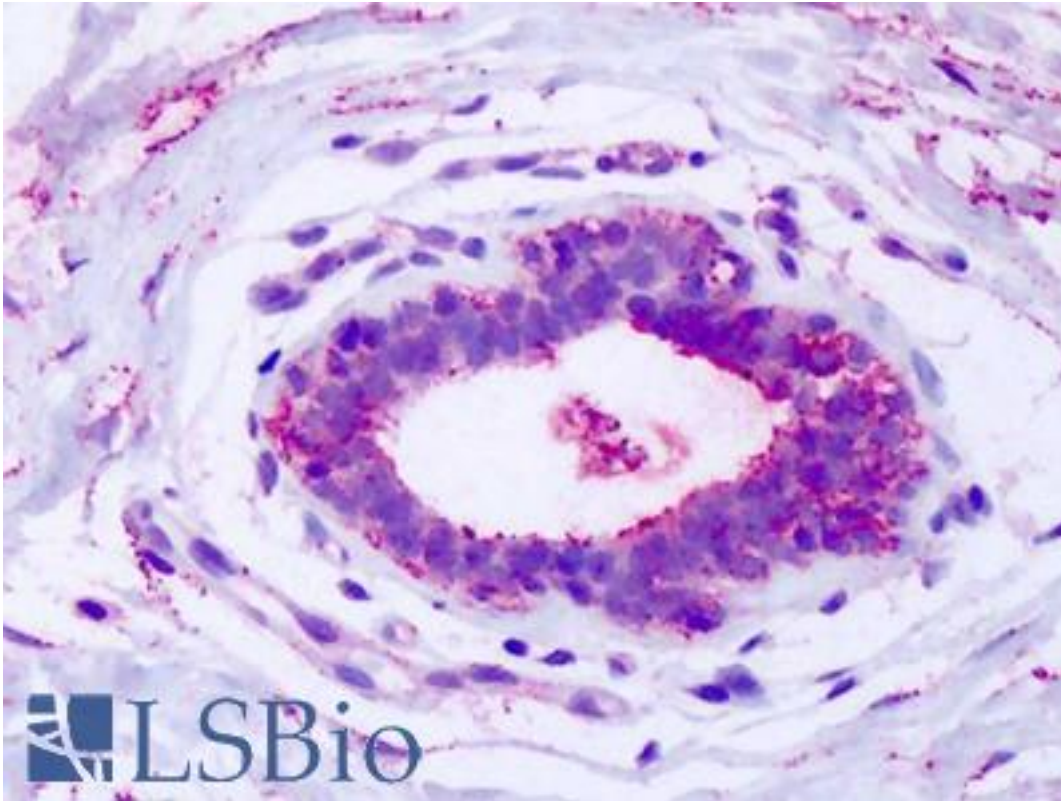
CatalogID:	LS-A1865
Target:	oxoglutarate (alpha-ketoglutarate) receptor 1 (OXGR1)
Synonyms:	OXGR1 Antibody, 2-oxoglutarate receptor 1 Antibody, Alpha-ketoglutarate receptor 1 Antibody, G protein-coupled receptor 80 Antibody, GPR80 Antibody, G-protein coupled receptor 99 Antibody, GPR99 Antibody, p2Y purinoceptor 15 Antibody, p2Y-like nucleotide receptor Antibody, p2RY15 Antibody, Oxoglutarate receptor 1 Antibody, p2Y-like GPCR Antibody, p2Y15 Antibody, G protein-coupled receptor 99 Antibody, G-protein coupled receptor 80 Antibody
Family / Subfamily:	GPCR / Purinergic
Host	OXGR1 antibody was produced in Rabbit
Clonality:	Polyclonal
Immunogen Species:	GPR80 / GPR99 / OXGR1 antibody was raised against Human
Antigen Type:	Synthetic peptide
Immunogen:	GPR80 / GPR99 / OXGR1 antibody was raised against synthetic 17 amino acid peptide from 2nd extracellular domain of human OXGR1. Percent identity with other species by BLAST analysis: Human, Gorilla, Gibbon, Marmoset (100%); Monkey, Mouse, Rat, Rabbit (94%); Dog, Bat, Hamster, Panda, Horse (88%).
Specificity:	Human OXGR1. BLAST analysis of the peptide immunogen showed no homology with other human proteins.
Epitope:	Extracellular Domain
Reactivity:	Human, Gorilla, Gibbon
Predicted Reactivity:	Monkey, Mouse, Rat, Rabbit
Purification:	Immunoaffinity purified
Presentation:	PBS, 0.1% sodium azide.
Recommended Storage:	Long term: -70°C; Short term: +4°C
Usage Summary:	Immunohistochemistry: LS-A1865 was validated for use in immunohistochemistry on a panel of 21 formalin-fixed, paraffin-embedded (FFPE) human tissues after heat induced antigen retrieval in pH 6.0 citrate buffer. After incubation with the primary antibody, slides were incubated with biotinylated secondary antibody, followed by alkaline phosphatase-streptavidin and chromogen. The stained slides were evaluated by a pathologist to confirm staining specificity. The optimal working concentration for LS-A1865 was determined to be 20 ug/ml.
Uses:	IHC - Paraffin (20 µg/ml), ELISA (Optimal dilution to be determined by the researcher)
Size:	50 µg
Concentration:	1 mg/ml

Immunohistochemistry Image:



Anti-OXGR1 antibody LS-A1865 IHC of human kidney. Immunohistochemistry of formalin-fixed, paraffin-embedded tissue after heat-induced antigen retrieval.

Immunohistochemistry Image:



Anti-OXGR1 antibody LS-A1865 IHC of human breast. Immunohistochemistry of formalin-fixed, paraffin-embedded tissue after heat-induced antigen retrieval.

Requested From:

Japan

Laboratory Reagent For In Vitro Research Use Only

Not for resale without prior written consent from LifeSpan BioSciences, Inc.

Created on 9/23/2014

© 2014 LifeSpan BioSciences