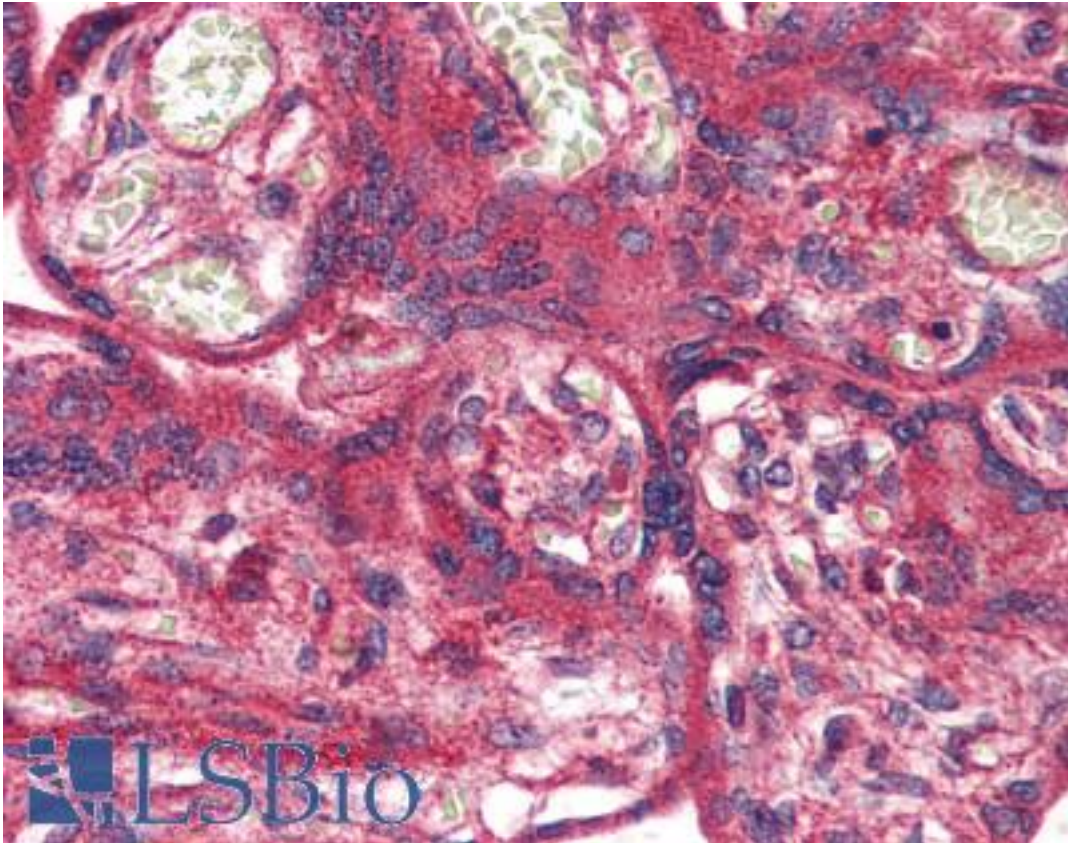


OR51E1 Rabbit anti-Human Polyclonal (Internal) Antibody - LS-A1852 - LSBio

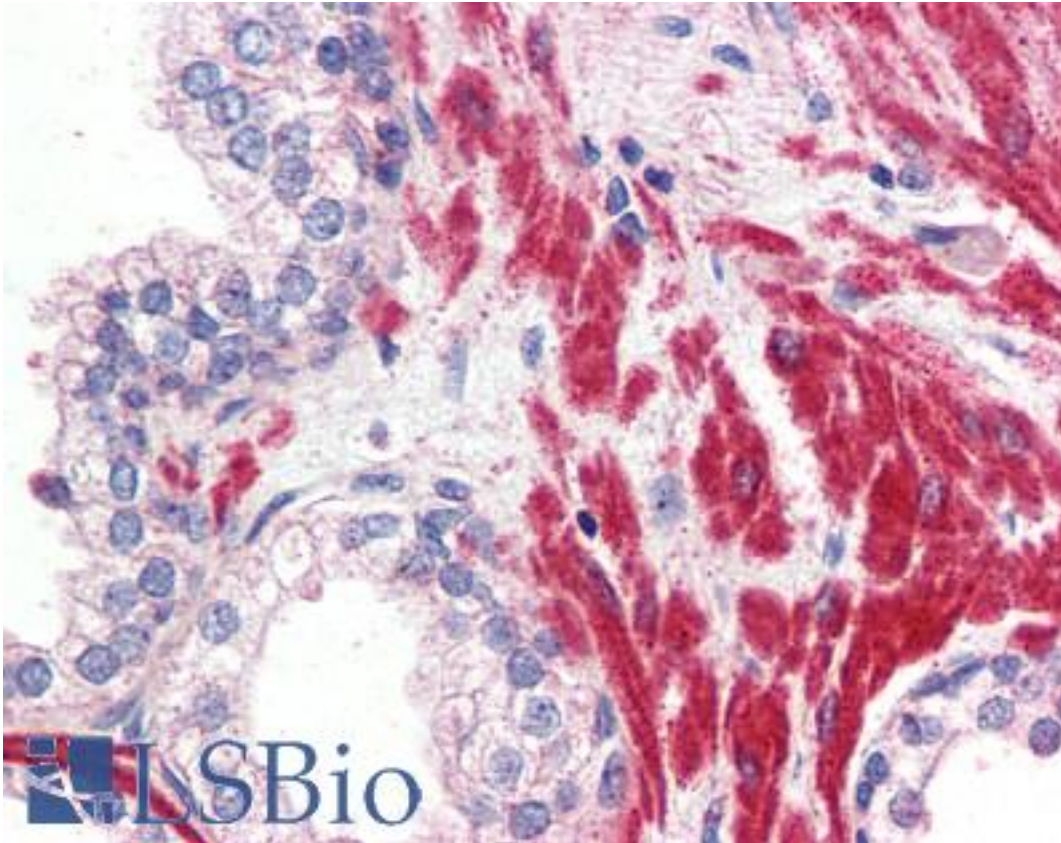
CatalogID:	LS-A1852
Target:	olfactory receptor, family 51, subfamily E, member 1 (OR51E1)
Synonyms:	OR51E1 Antibody, D-GPCR Antibody, Olfactory receptor OR11-15 Antibody, OR51E1P Antibody, OR52A3P Antibody, PSGR2 Antibody, Olfactory receptor 51E1 Antibody, Olfactory receptor 52A3 Antibody, POGR Antibody, G-protein coupled receptor 164 Antibody, GPR136 Antibody, GPR164 Antibody
Family / Subfamily:	GPCR / Orphan-U
Host	OR51E1 antibody was produced in Rabbit
Clonality:	Polyclonal
Immunogen Species:	OR51E1 antibody was raised against Human
Antigen Type:	Synthetic peptide
Immunogen:	OR51E1 antibody was raised against synthetic 16 amino acid peptide from internal region of human OR51E1. Percent identity with other species by BLAST analysis: Human, Gorilla, Gibbon, Monkey, Marmoset, Mouse, Rat, Bovine, Dog, Hamster, Panda, Rabbit, Horse, Pig (100%); Galago, Bat, Elephant (94%); Opossum (88%).
Specificity:	Human OR51E1. BLAST analysis of the peptide immunogen showed no homology with other human proteins, except OR51B5 (69%).
Epitope:	Internal
Reactivity:	Human, Gorilla, Gibbon, Monkey, Mouse, Rat, Bovine, Dog, Hamster, Horse, Pig, Rabbit
Predicted Reactivity:	Bat
Purification:	Immunoaffinity purified
Presentation:	PBS, 0.1% sodium azide.
Recommended Storage:	Long term: -70°C; Short term: +4°C
Usage Summary:	Immunohistochemistry: LS-A1852 was validated for use in immunohistochemistry on a panel of 21 formalin-fixed, paraffin-embedded (FFPE) human tissues after proteinase K antigen retrieval. After incubation with the primary antibody, slides were incubated with biotinylated secondary antibody, followed by alkaline phosphatase-streptavidin and chromogen. The stained slides were evaluated by a pathologist to confirm staining specificity. The optimal working concentration for LS -A1852 was determined to be 10 ug/ml.
Uses:	IHC - Paraffin (10 µg/ml) (Optimal dilution to be determined by the researcher)
Size:	50 µg
Concentration:	1 mg/ml

Immunohistochemistry Image:



Anti-OR51E1 antibody LS-A1852 IHC of human placenta. Immunohistochemistry of formalin-fixed, paraffin-embedded tissue after heat-induced antigen retrieval.

Immunohistochemistry Image:



Anti-OR51E1 antibody LS-A1852 IHC of human prostate. Immunohistochemistry of formalin-fixed, paraffin-embedded tissue after heat-induced antigen retrieval.

Requested From:

Japan

Laboratory Reagent For In Vitro Research Use Only

Not for resale without prior written consent from LifeSpan BioSciences, Inc.

Created on 9/23/2014

© 2014 LifeSpan BioSciences