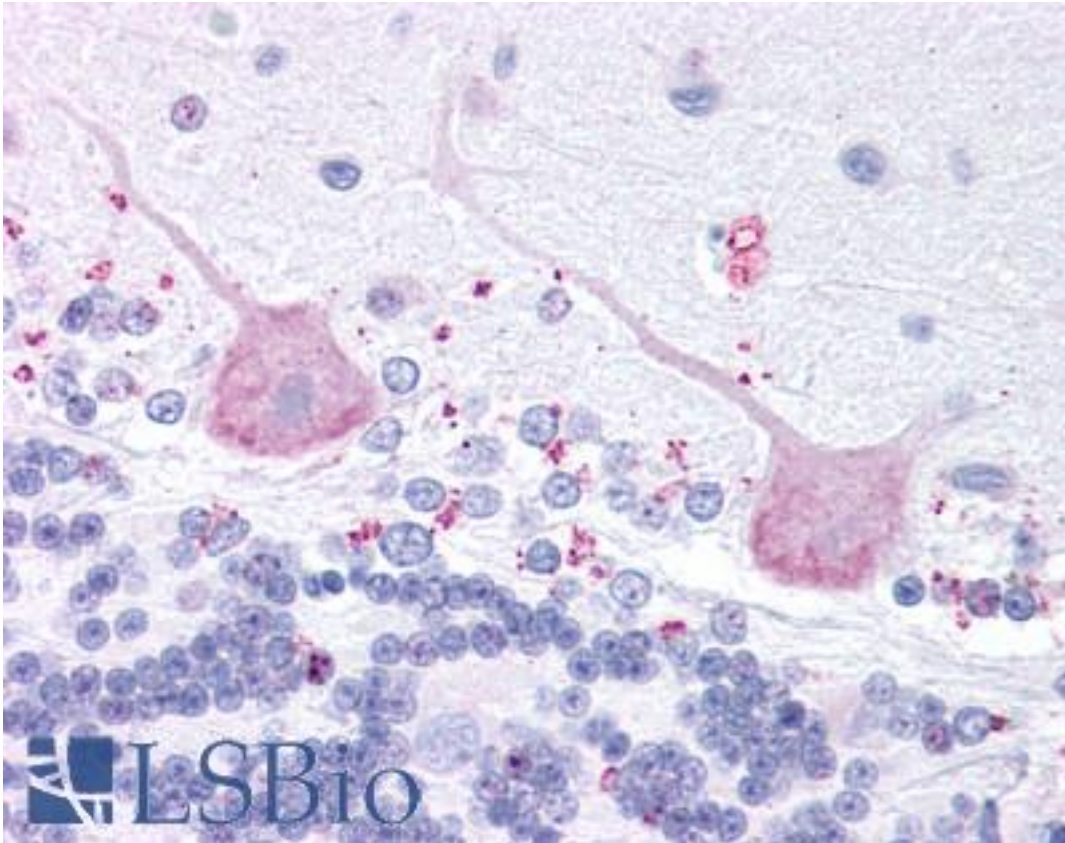


MCHR2 Rabbit anti-Human Polyclonal (C-Terminus) Antibody - LS-A1848 - LSBio

CatalogID:	LS-A1848
Target:	melanin-concentrating hormone receptor 2 (MCHR2)
Synonyms:	MCHR2 Antibody, G protein-coupled receptor slt Antibody, GPRv17 Antibody, GPR145 Antibody, G protein-coupled receptor 145 Antibody, G-protein coupled receptor 145 Antibody, MCH receptor 2 Antibody, MCHR-2 Antibody, MCH-2R Antibody, MCH-R2 Antibody, MCH2 Antibody, Mch2 receptor Antibody, SLT receptor Antibody, MCH2R Antibody, SLT Antibody
Family / Subfamily:	GPCR / Melanin-concentrating hormone receptor
Host	MCHR2 antibody was produced in Rabbit
Clonality:	Polyclonal
Immunogen Species:	MCHR2 antibody was raised against Human
Antigen Type:	Synthetic peptide
Immunogen:	MCHR2 antibody was raised against synthetic 18 amino acid peptide from C-terminal cytoplasmic domain of human MCHR2. Percent identity with other species by BLAST analysis: Human (100%); Gorilla, Gibbon (94%); Monkey, Marmoset (89%); Panda, Pig (83%).
Specificity:	Human MCHR2. BLAST analysis of the peptide immunogen showed no homology with other human proteins.
Epitope:	C-Terminus
Reactivity:	Human
Predicted Reactivity:	Gorilla, Gibbon
Purification:	Immunoaffinity purified
Presentation:	PBS, 0.1% sodium azide.
Recommended Storage:	Long term: -70°C; Short term: +4°C
Usage Summary:	Immunohistochemistry: LS-A1848 was validated for use in immunohistochemistry on a panel of 21 formalin-fixed, paraffin-embedded (FFPE) human tissues after heat induced antigen retrieval in pH 6.0 citrate buffer. After incubation with the primary antibody, slides were incubated with biotinylated secondary antibody, followed by alkaline phosphatase-streptavidin and chromogen. The stained slides were evaluated by a pathologist to confirm staining specificity. The optimal working concentration for LS-A1848 was determined to be 6 ug/ml.
Uses:	IHC - Paraffin (5 - 10 µg/ml) (Optimal dilution to be determined by the researcher)
Size:	50 µg
Concentration:	1 mg/ml

Immunohistochemistry Image:



Anti-MCHR2 antibody LS-A1848 IHC of human brain, cerebellum. Immunohistochemistry of formalin-fixed, paraffin-embedded tissue after heat-induced antigen retrieval.

Requested From:

Japan

Laboratory Reagent For In Vitro Research Use Only

Not for resale without prior written consent from LifeSpan BioSciences, Inc.

Created on 9/23/2014

© 2014 LifeSpan BioSciences