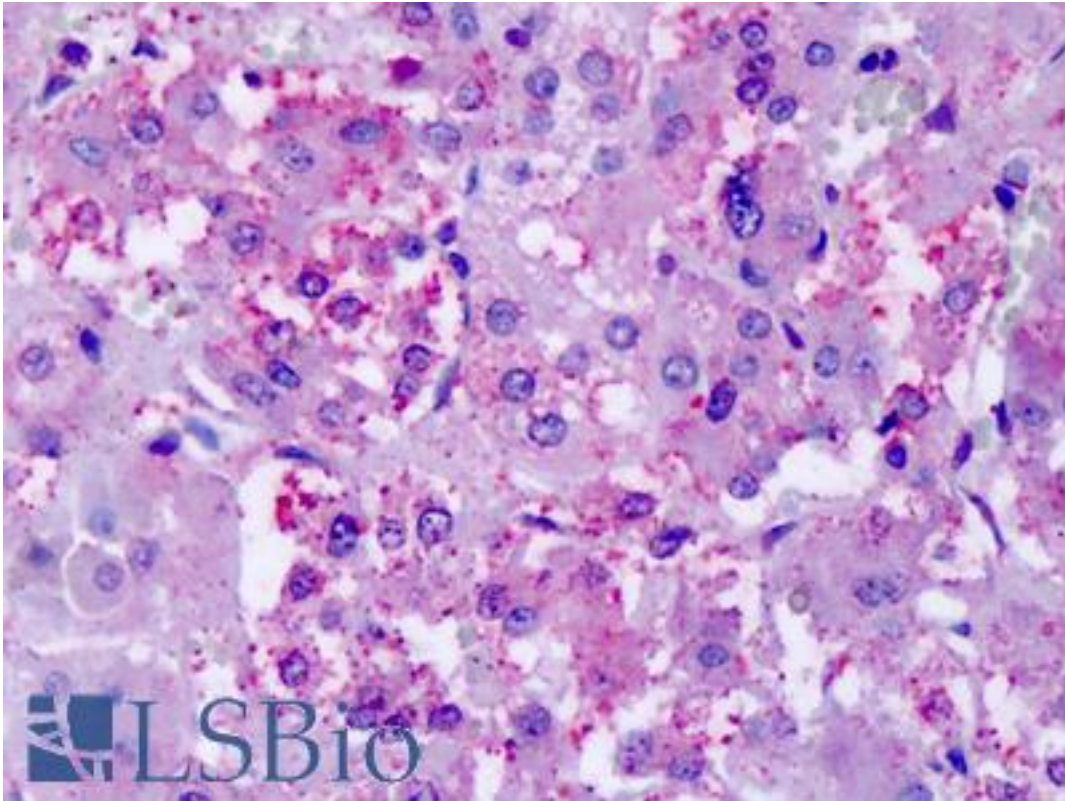


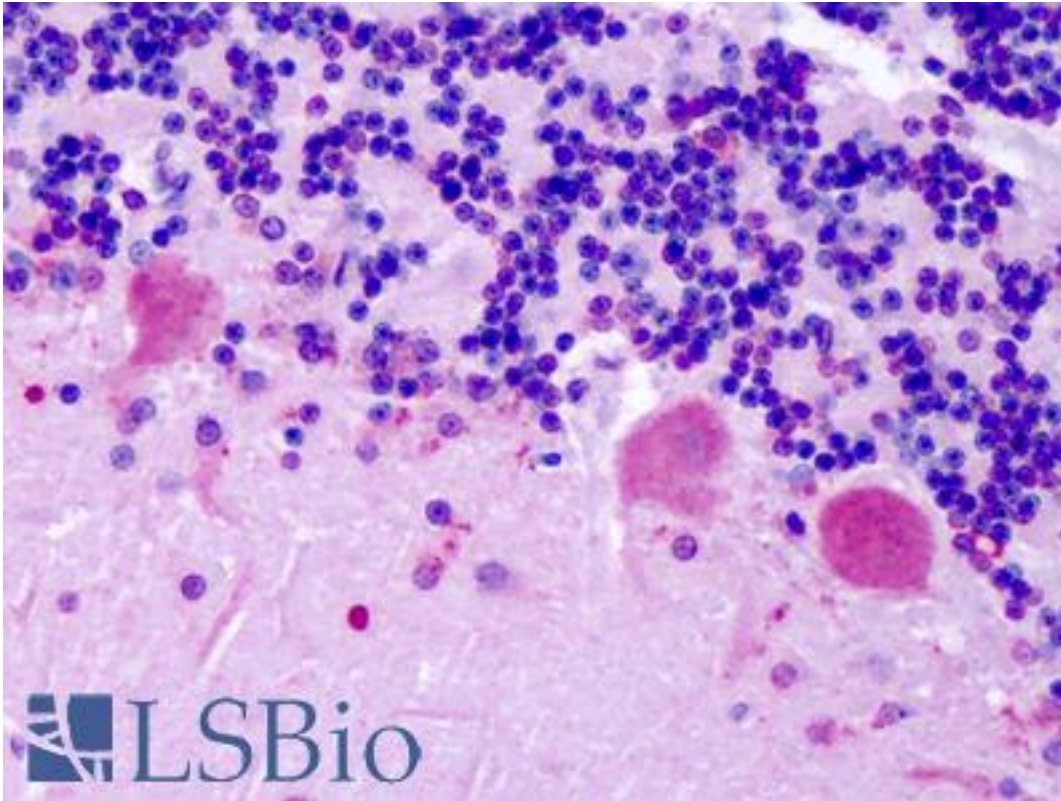
CHRM2 / M2 Rabbit anti-Human Polyclonal (Cytoplasmic Domain) Antibody - LS-A1831 - LSBio	
CatalogID:	LS-A1831
Target:	cholinergic receptor, muscarinic 2 (CHRM2)
Synonyms:	CHRM2 Antibody, 7TM receptor Antibody, HM2 Antibody, M2 muscarinic receptor Antibody, M2-mAChR Antibody, Muscarinic receptor M2 Antibody, Muscarinic M2 receptor Antibody
Family / Subfamily:	GPCR / Acetylcholine
Host	CHRM2 antibody was produced in Rabbit
Clonality:	Polyclonal
Immunogen Species:	CHRM2 / M2 antibody was raised against Human
Antigen Type:	Synthetic peptide
Immunogen:	CHRM2 / M2 antibody was raised against synthetic 20 amino acid peptide from 3rd cytoplasmic domain of human CHRM2. Percent identity with other species by BLAST analysis: Human, Chimpanzee, Gorilla, Orangutan, Gibbon, Marmoset, Sheep, Bovine, Elephant, Panda, Rabbit, Platypus (100%); Mouse, Rat, Bat, Dog, Hamster, Horse, Pig, Opossum, Guinea pig (95%); Turkey, Chicken (80%).
Specificity:	Human CHRM2. BLAST analysis of the peptide immunogen showed no homology with other human proteins.
Epitope:	Cytoplasmic Domain
Reactivity:	Human, Chimpanzee, Gorilla, Orangutan, Gibbon, Monkey, Bovine, Rabbit, Sheep
Predicted Reactivity:	Mouse, Rat, Bat, Dog, Guinea pig, Hamster, Horse, Pig
Purification:	Immunoaffinity purified
Presentation:	PBS, 0.1% sodium azide.
Recommended Storage:	Long term: -70°C; Short term: +4°C
Uses:	IHC - Paraffin (10 µg/ml) (Optimal dilution to be determined by the researcher)
Size:	50 µg
Concentration:	1 mg/ml

Immunohistochemistry Image:



Anti-CHRM2 antibody IHC of human adrenal. Immunohistochemistry of formalin-fixed, paraffin-embedded tissue after heat-induced antigen retrieval. Antibody LS-A1831 dilution 10 ug/ml.

Immunohistochemistry Image:



Anti-CHRM2 antibody IHC of human brain, cerebellum. Immunohistochemistry of formalin-fixed, paraffin-embedded tissue after heat-induced antigen retrieval. Antibody LS-A1831 dilution 10 ug/ml.

Requested From:

Japan

Laboratory Reagent For In Vitro Research Use Only

Not for resale without prior written consent from LifeSpan BioSciences, Inc.

Created on 9/23/2014

© 2014 LifeSpan BioSciences