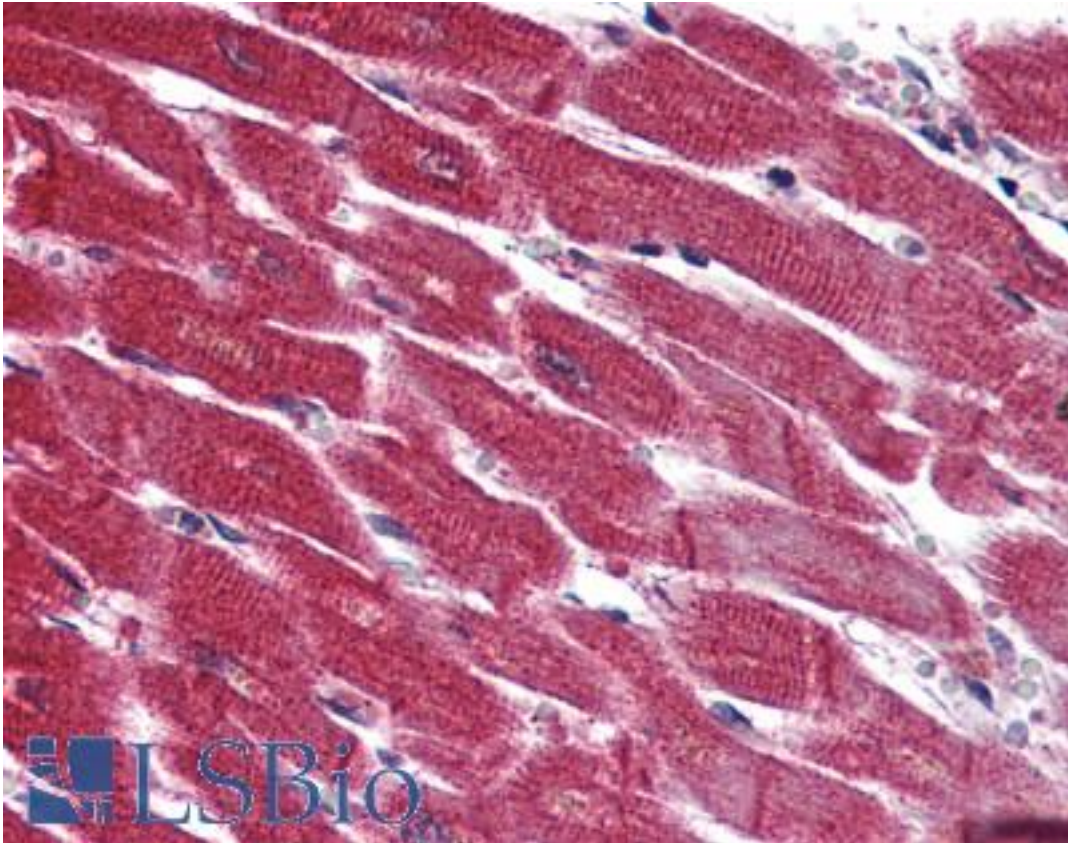


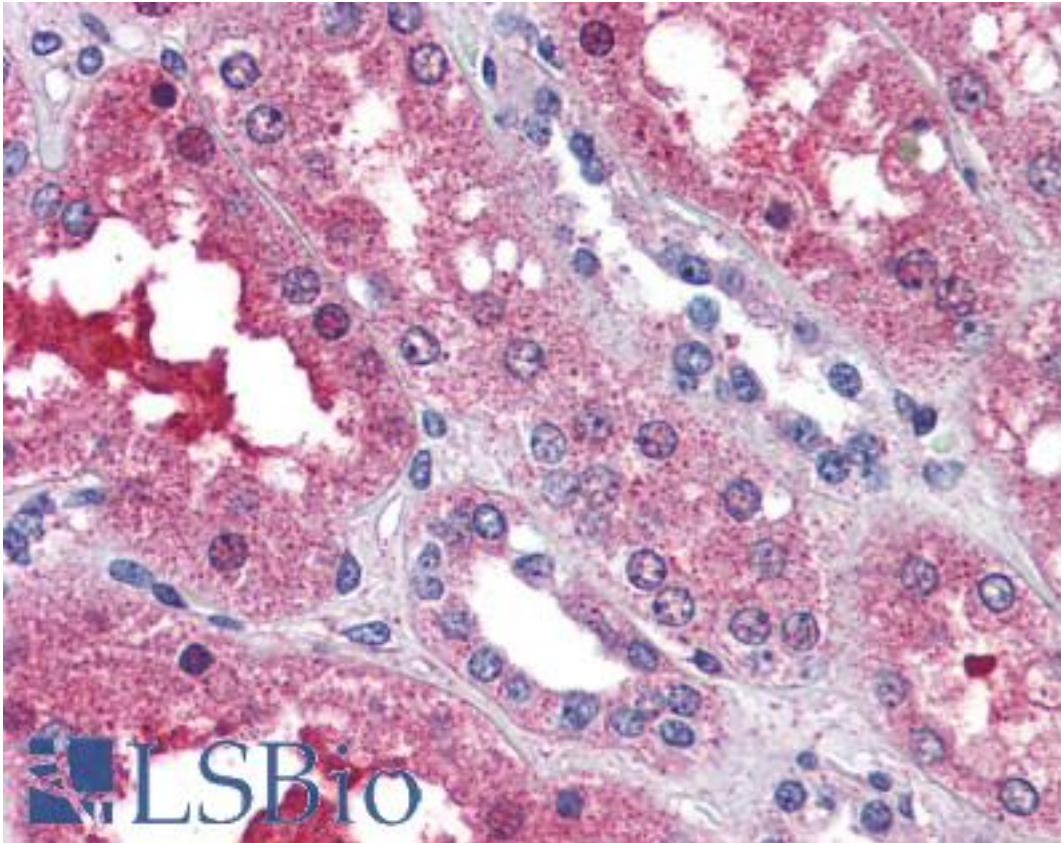
SIPR3 / EDG3 / S1P3 Rabbit anti-Human Polyclonal (N-Terminus) Antibody - LS-A1752 - LSBio	
<b>CatalogID:</b>	LS-A1752
<b>Target:</b>	sphingosine-1-phosphate receptor 3 (S1PR3)
<b>Synonyms:</b>	S1PR3 Antibody, EDG-3 Antibody, EDG3 Antibody, LPB3 Antibody, S1P receptor EDG3 Antibody, S1P3 Antibody, S1P receptor Edg-3 Antibody, S1P receptor 3 Antibody
<b>Family / Subfamily:</b>	GPCR / Lysophospholipid/Lyso sphingolipid
<b>Host</b>	S1PR3 antibody was produced in Rabbit
<b>Clonality:</b>	Polyclonal
<b>Immunogen Species:</b>	SIPR3 / EDG3 / S1P3 antibody was raised against Human
<b>Antigen Type:</b>	Synthetic peptide
<b>Immunogen:</b>	SIPR3 / EDG3 / S1P3 antibody was raised against synthetic 19 amino acid peptide from N-Terminus of human EDG3 / S1P3. Percent identity with other species by BLAST analysis: Human, Gorilla (100%); Gibbon, Monkey, Marmoset (95%).
<b>Specificity:</b>	Human EDG3 / S1P3. BLAST analysis of the peptide immunogen showed no homology with other human proteins, except NAA16 (53%).
<b>Epitope:</b>	N-Terminus
<b>Reactivity:</b>	Human, Gorilla
<b>Predicted Reactivity:</b>	Gibbon, Monkey
<b>Purification:</b>	Immunoaffinity purified
<b>Presentation:</b>	PBS, 0.1% sodium azide.
<b>Recommended Storage:</b>	Long term: -70°C; Short term: +4°C
<b>Usage Summary:</b>	Immunohistochemistry: LS-A1752 was validated for use in immunohistochemistry on a panel of 21 formalin-fixed, paraffin-embedded (FFPE) human tissues after proteinase K antigen retrieval. After incubation with the primary antibody, slides were incubated with biotinylated secondary antibody, followed by alkaline phosphatase-streptavidin and chromogen. The stained slides were evaluated by a pathologist to confirm staining specificity. The optimal working concentration for LS -A1752 was determined to be 5 ug/ml.
<b>Uses:</b>	IHC - Paraffin (5 µg/ml) (Optimal dilution to be determined by the researcher)
<b>Size:</b>	50 µg
<b>Concentration:</b>	1 mg/ml

**Immunohistochemistry Image:**



Anti-EDG3 / S1P3 antibody LS-A1752 IHC of human heart. Immunohistochemistry of formalin-fixed, paraffin-embedded tissue after heat-induced antigen retrieval.

**Immunohistochemistry Image:**



Anti-EDG3 / S1P3 antibody LS-A1752 IHC of human kidney. Immunohistochemistry of formalin-fixed, paraffin-embedded tissue after heat-induced antigen retrieval.

**Requested From:**

Japan

Laboratory Reagent For In Vitro Research Use Only

Not for resale without prior written consent from LifeSpan BioSciences, Inc.

Created on 9/23/2014

© 2014 LifeSpan BioSciences