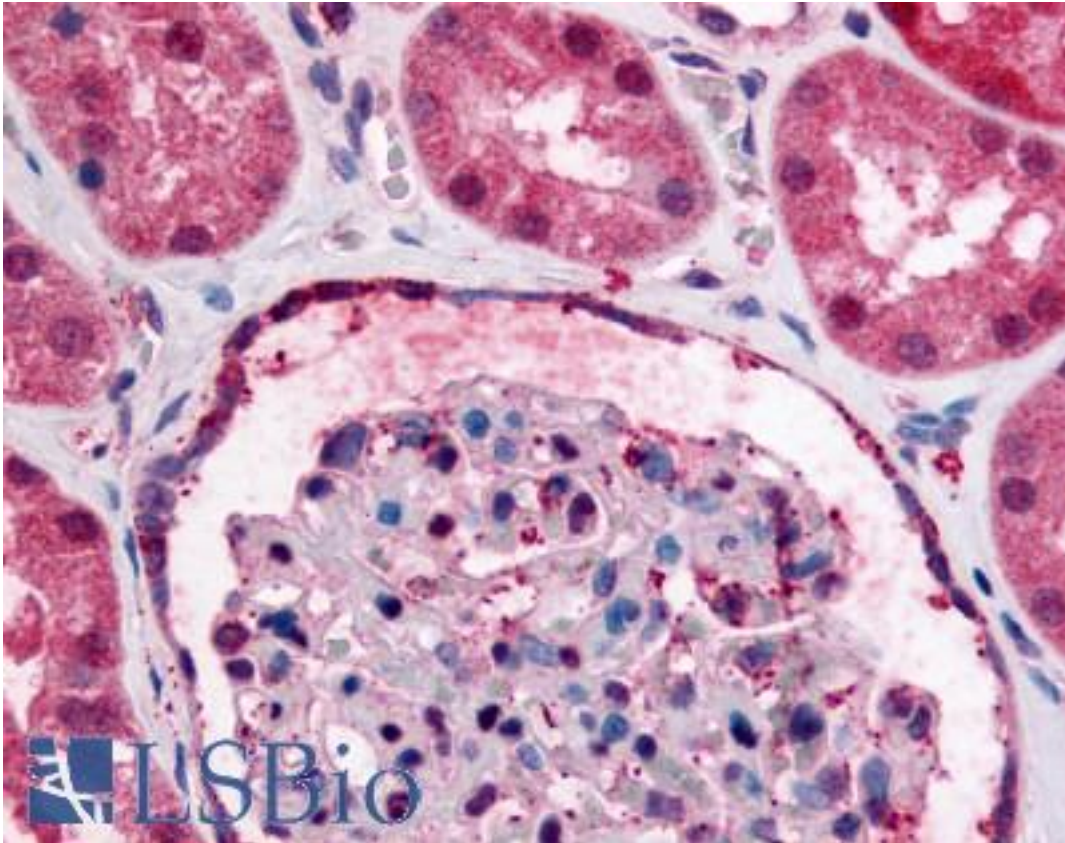


GPR89A Rabbit anti-Human Polyclonal (Internal) Antibody - LS-A1730 - LSBio

CatalogID:	LS-A1730
Target:	G protein-coupled receptor 89A (GPR89A)
Synonyms:	GPR89A Antibody, G protein-coupled receptor 89A Antibody, Golgi pH regulator A Antibody, GPHRA Antibody, GPR89 Antibody, Protein GPR89 Antibody, Protein GPR89A Antibody, SH120 Antibody, UNQ192 Antibody
Family / Subfamily:	GPCR / Orphan-A
Host	GPR89A antibody was produced in Rabbit
Clonality:	Polyclonal
Immunogen Species:	GPR89A antibody was raised against Human
Antigen Type:	Synthetic peptide
Immunogen:	GPR89A antibody was raised against synthetic 17 amino acid peptide from cytoplasmic loop of human GPR89A. Percent identity with other species by BLAST analysis: Human, Gibbon, Monkey, Marmoset, Mouse, Rat, Bovine, Hamster, Horse, Pig, Opossum (100%); Bat, Panda, Chicken, Platypus, Xenopus, Pufferfish, Zebrafish, Stickleback (94%); Dog, Salmon (88%).
Specificity:	Human GPR89A. BLAST analysis of the peptide immunogen showed no homology with other human proteins.
Epitope:	Internal
Reactivity:	Human, Gibbon, Monkey, Mouse, Rat, Bovine, Hamster, Horse, Pig
Predicted Reactivity:	Bat, Chicken, Xenopus, Zebrafish
Purification:	Immunoaffinity purified
Presentation:	PBS, 0.1% sodium azide.
Recommended Storage:	Long term: -70°C; Short term: +4°C
Usage Summary:	Immunohistochemistry: LS-A1730 was validated for use in immunohistochemistry on a panel of 21 formalin-fixed, paraffin-embedded (FFPE) human tissues after heat induced antigen retrieval in pH 6.0 citrate buffer. After incubation with the primary antibody, slides were incubated with biotinylated secondary antibody, followed by alkaline phosphatase-streptavidin and chromogen. The stained slides were evaluated by a pathologist to confirm staining specificity. The optimal working concentration for LS-A1730 was determined to be 5 ug/ml.
Uses:	IHC - Paraffin (5 µg/ml) (Optimal dilution to be determined by the researcher)
Size:	50 µg
Concentration:	1 mg/ml

Immunohistochemistry Image:



Anti-GPR89A antibody LS-A1730 IHC of human kidney. Immunohistochemistry of formalin-fixed, paraffin-embedded tissue after heat-induced antigen retrieval.

Requested From:

Japan

Laboratory Reagent For In Vitro Research Use Only

Not for resale without prior written consent from LifeSpan BioSciences, Inc.

Created on 9/23/2014

© 2014 LifeSpan BioSciences