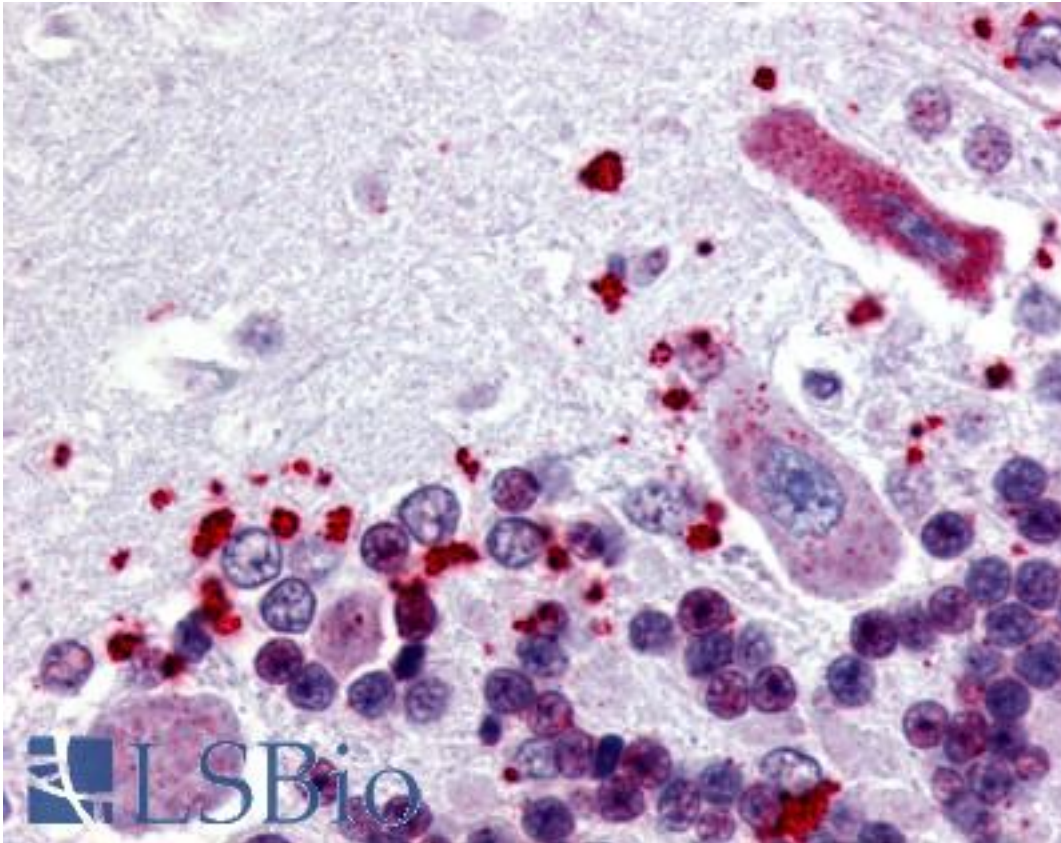


NPBWR1 / GPR7 Rabbit anti-Human Polyclonal (Cytoplasmic Domain) Antibody - LS-A173 - LSBio	
CatalogID:	LS-A173
Target:	neuropeptides B/W receptor 1 (NPBWR1)
Synonyms:	NPBWR1 Antibody, G protein-coupled receptor 7 Antibody, GPR7 Antibody, Neuropeptide B/W receptor 1 Antibody, Neuropeptides B/W receptor 1 Antibody, G-protein coupled receptor 7 Antibody
Family / Subfamily:	GPCR / Neuropeptide
Host	NPBWR1 antibody was produced in Rabbit
Clonality:	Polyclonal
Immunogen Species:	NPBWR1 / GPR7 antibody was raised against Human
Antigen Type:	Synthetic peptide
Immunogen:	NPBWR1 / GPR7 antibody was raised against synthetic 20 amino acid peptide from 3rd cytoplasmic domain of human NPBWR1. Percent identity with other species by BLAST analysis: Human, Gibbon, Marmoset (100%); Gorilla, Monkey (95%); Bovine, Elephant, Panda, Rabbit, Opossum (85%); Mouse, Rat, Horse (80%).
Specificity:	Human NPBWR1. BLAST analysis of the peptide immunogen showed no homology with other human proteins.
Epitope:	Cytoplasmic Domain
Reactivity:	Human, Gibbon
Predicted Reactivity:	Gorilla, Monkey
Purification:	Immunoaffinity purified
Presentation:	PBS, 0.1% sodium azide.
Recommended Storage:	Long term: -70°C; Short term: +4°C
Usage Summary:	Immunohistochemistry: LS-A173 was validated for use in immunohistochemistry on a panel of 21 formalin-fixed, paraffin-embedded (FFPE) human tissues after heat induced antigen retrieval in pH 6.0 citrate buffer. After incubation with the primary antibody, slides were incubated with biotinylated secondary antibody, followed by alkaline phosphatase-streptavidin and chromogen. The stained slides were evaluated by a pathologist to confirm staining specificity. The optimal working concentration for LS-A173 was determined to be 20 ug/ml.
Uses:	IHC - Paraffin (20 µg/ml), ELISA (Optimal dilution to be determined by the researcher)
Size:	50 µg
Concentration:	1 mg/ml

Immunohistochemistry Image:



Anti-NPBWR1 antibody LS-A173 IHC of human brain, cerebellum. Immunohistochemistry of formalin-fixed, paraffin-embedded tissue after heat-induced antigen retrieval.

Requested From:

Japan

Laboratory Reagent For In Vitro Research Use Only

Not for resale without prior written consent from LifeSpan BioSciences, Inc.

Created on 9/23/2014

© 2014 LifeSpan BioSciences