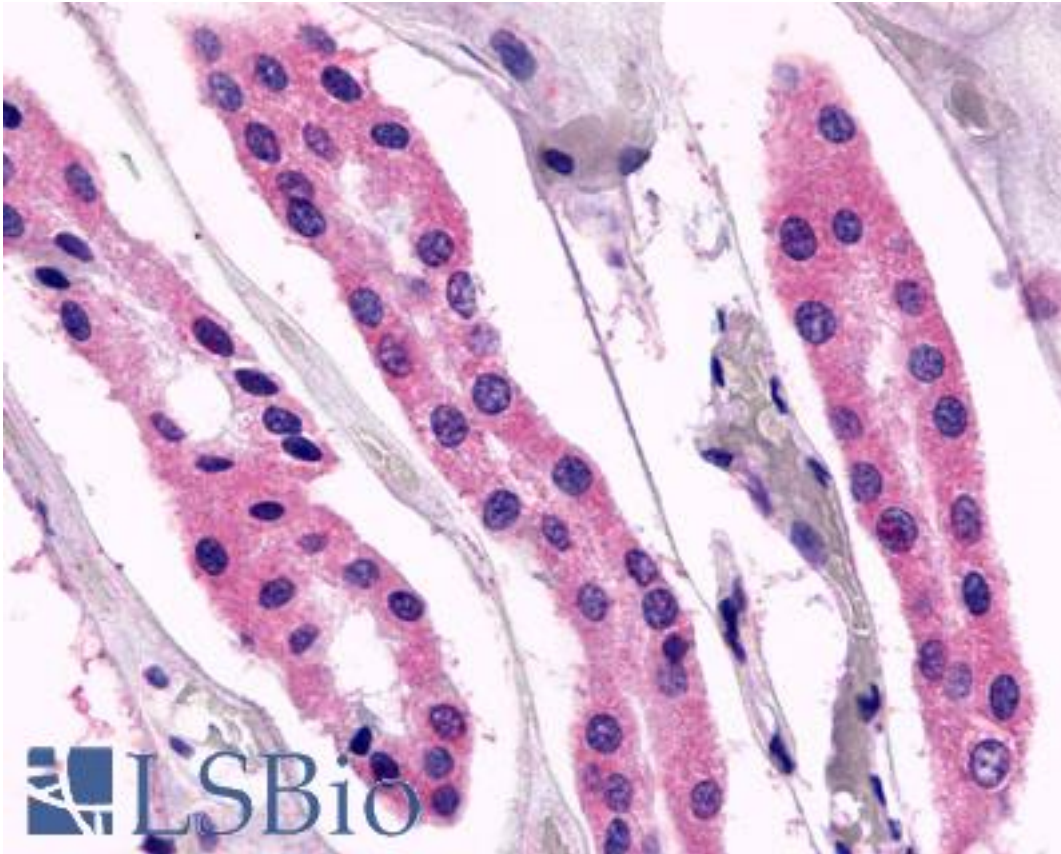


GPR98 / VLGR1 Rabbit anti-Human Polyclonal (N-Terminus) Antibody - LS-A1729 - LSBio	
CatalogID:	LS-A1729
Target:	G protein-coupled receptor 98 (GPR98)
Synonyms:	GPR98 Antibody, FEB4 Antibody, KIAA0686 Antibody, G-protein coupled receptor 98 Antibody, MASS1 Antibody, VLGR1b Antibody, Usher syndrome type-2C protein Antibody, USH2B Antibody, USH2C Antibody, G protein-coupled receptor 98 Antibody, KIAA1943 Antibody, VLGR1 Antibody
Family / Subfamily:	GPCR / Orphan-A
Host	GPR98 antibody was produced in Rabbit
Clonality:	Polyclonal
Immunogen Species:	GPR98 / VLGR1 antibody was raised against Human
Antigen Type:	Synthetic peptide
Immunogen:	GPR98 / VLGR1 antibody was raised against synthetic 19 amino acid peptide from N-terminal extracellular domain of human GPR98. Percent identity with other species by BLAST analysis: Human, Gorilla, Gibbon, Marmoset, Horse (100%); Monkey, Bat, Elephant (95%); Hamster (89%); Mouse (84%).
Specificity:	Human GPR98. BLAST analysis of the peptide immunogen showed no homology with other human proteins.
Epitope:	N-Terminus
Reactivity:	Human, Gorilla, Gibbon, Horse
Predicted Reactivity:	Monkey, Bat
Purification:	Immunoaffinity purified
Presentation:	PBS, 0.1% sodium azide.
Recommended Storage:	Long term: -70°C; Short term: +4°C
Uses:	IHC - Paraffin (10 - 26 µg/ml), Western blot (Optimal dilution to be determined by the researcher)
Size:	50 µg
Concentration:	1 mg/ml

Immunohistochemistry Image:



Anti-GPR98 antibody LS-A1729 IHC of human kidney, renal tubules. Immunohistochemistry of formalin-fixed, paraffin-embedded tissue after heat-induced antigen retrieval.

Requested From:

Japan

Laboratory Reagent For In Vitro Research Use Only

Not for resale without prior written consent from LifeSpan BioSciences, Inc.

Created on 9/23/2014

© 2014 LifeSpan BioSciences