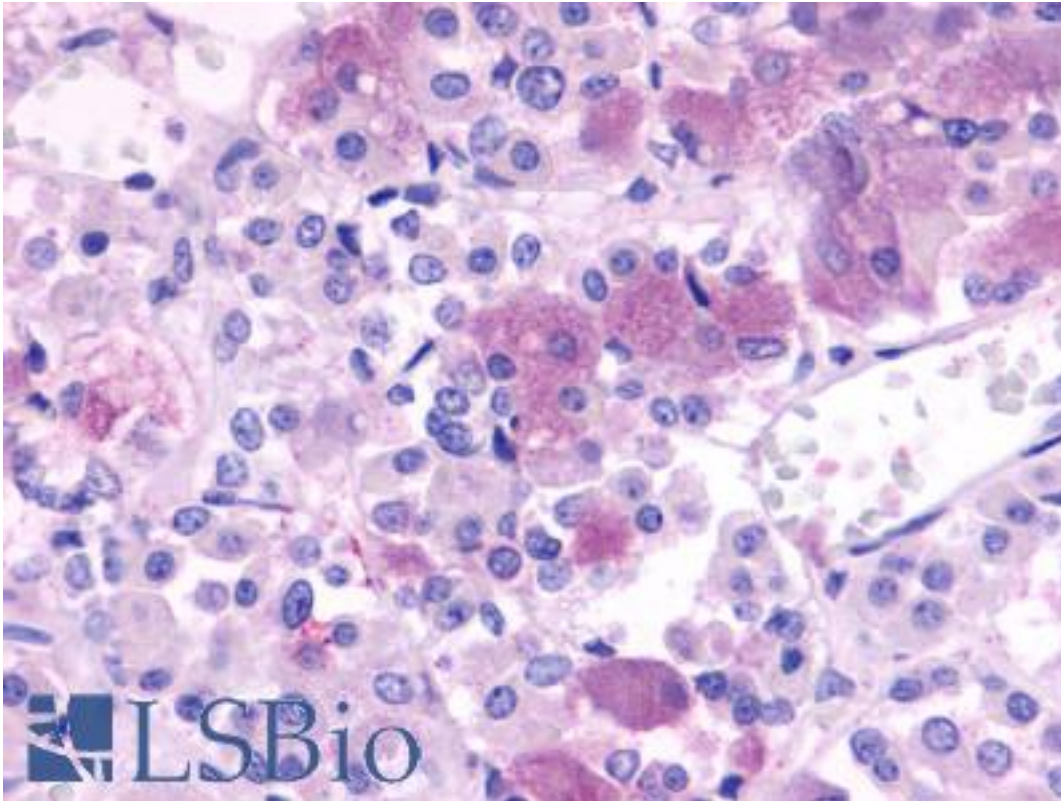


NPBWR1 / GPR7 Rabbit anti-Human Polyclonal (Extracellular Domain) Antibody - LS-A172 - LSBio	
CatalogID:	LS-A172
Target:	neuropeptides B/W receptor 1 (NPBWR1)
Synonyms:	NPBWR1 Antibody, G protein-coupled receptor 7 Antibody, GPR7 Antibody, Neuropeptide B/W receptor 1 Antibody, Neuropeptides B/W receptor 1 Antibody, G-protein coupled receptor 7 Antibody
Family / Subfamily:	GPCR / Neuropeptide
Host	NPBWR1 antibody was produced in Rabbit
Clonality:	Polyclonal
Immunogen Species:	NPBWR1 / GPR7 antibody was raised against Human
Antigen Type:	Synthetic peptide
Immunogen:	NPBWR1 / GPR7 antibody was raised against synthetic 19 amino acid peptide from 2nd extracellular domain of human NPBWR1. Percent identity with other species by BLAST analysis: Human, Gorilla, Gibbon, Monkey, Elephant, Panda (100%); Marmoset, Mouse, Rat, Bovine, Horse (95%); Rabbit (84%).
Specificity:	Human NPBWR1. BLAST analysis of the peptide immunogen showed no homology with other human proteins.
Epitope:	Extracellular Domain
Reactivity:	Human, Gorilla, Gibbon
Predicted Reactivity:	Monkey, Mouse, Rat, Bovine, Horse
Purification:	Immunoaffinity purified
Presentation:	PBS, 0.1% sodium azide.
Recommended Storage:	Long term: -70°C; Short term: +4°C
Uses:	IHC - Paraffin (6 - 12 µg/ml) (Optimal dilution to be determined by the researcher)
Size:	50 µg
Concentration:	1 mg/ml

Immunohistochemistry Image:



Anti-NPBWR1 antibody LS-A172 IHC of human brain, pituitary. Immunohistochemistry of formalin-fixed, paraffin-embedded tissue after heat-induced antigen retrieval.

Requested From:

Japan

Laboratory Reagent For In Vitro Research Use Only

Not for resale without prior written consent from LifeSpan BioSciences, Inc.

Created on 9/23/2014

© 2014 LifeSpan BioSciences