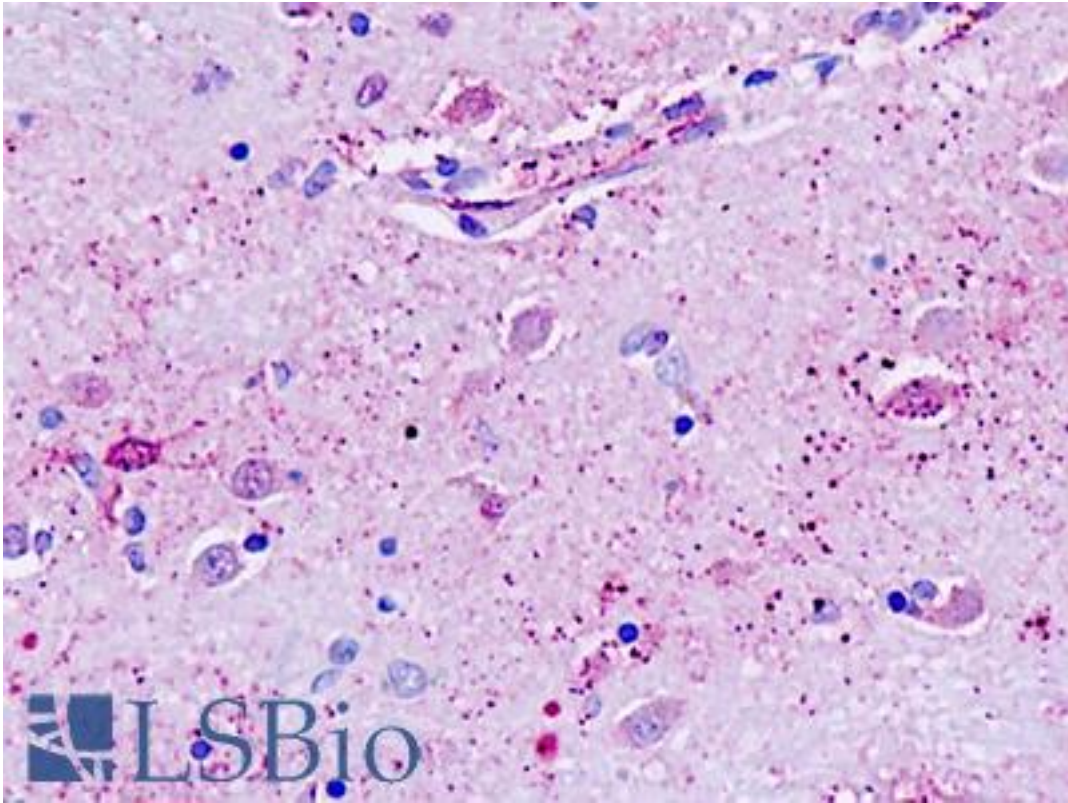


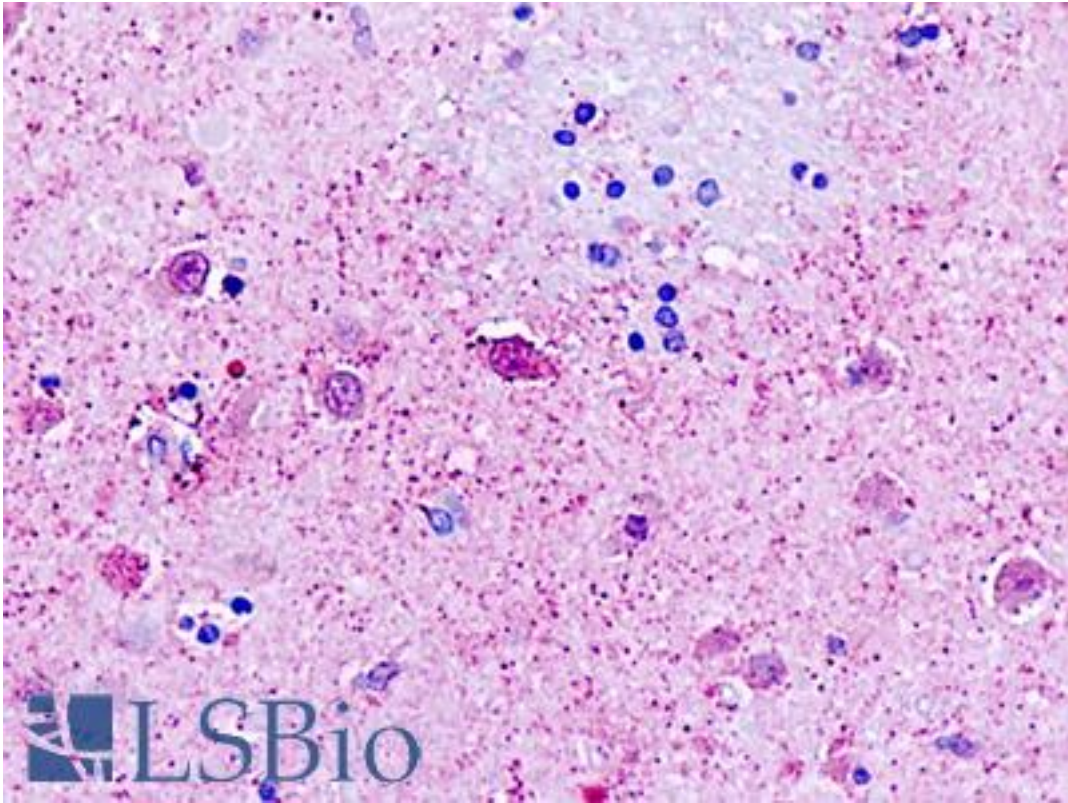
GPR162 Rabbit anti-Human Polyclonal (Transmembrane Domain) Antibody - LS-A1697 - LSBio	
<b>CatalogID:</b>	LS-A1697
<b>Target:</b>	G protein-coupled receptor 162 (GPR162)
<b>Synonyms:</b>	GPR162 Antibody, A-2 Antibody, Gene rich cluster, A Antibody, G protein-coupled receptor 162 Antibody, GRCA Antibody
<b>Family / Subfamily:</b>	GPCR / Orphan-U
<b>Host</b>	GPR162 antibody was produced in Rabbit
<b>Clonality:</b>	Polyclonal
<b>Immunogen Species:</b>	GPR162 antibody was raised against Human
<b>Antigen Type:</b>	Synthetic peptide
<b>Immunogen:</b>	GPR162 antibody was raised against synthetic 19 amino acid peptide from 6th transmembrane domain of human GPR162. Percent identity with other species by BLAST analysis: Human, Monkey (100%); Gibbon, Rat, Dog, Pig (95%); Mouse, Bovine, Hamster, Panda, Horse (89%); Bat, Elephant (84%).
<b>Specificity:</b>	Human GPR162. BLAST analysis of the peptide immunogen showed no homology with other human proteins.
<b>Epitope:</b>	Transmembrane Domain
<b>Reactivity:</b>	Human, Monkey
<b>Predicted Reactivity:</b>	Gibbon, Rat, Dog, Pig
<b>Purification:</b>	Immunoaffinity purified
<b>Presentation:</b>	PBS, 0.1% sodium azide.
<b>Recommended Storage:</b>	Long term: -70°C; Short term: +4°C
<b>Uses:</b>	IHC - Paraffin (6 µg/ml) (Optimal dilution to be determined by the researcher)
<b>Size:</b>	50 µg
<b>Concentration:</b>	1 mg/ml

**Immunohistochemistry Image:**



Human, Brain, neurons: Formalin-Fixed Paraffin-Embedded (FFPE)

**Immunohistochemistry Image:**



Human, Brain, neurons: Formalin-Fixed Paraffin-Embedded (FFPE)

**Requested From:**

Japan

Laboratory Reagent For In Vitro Research Use Only

Not for resale without prior written consent from LifeSpan BioSciences, Inc.

Created on 9/23/2014

© 2014 LifeSpan BioSciences