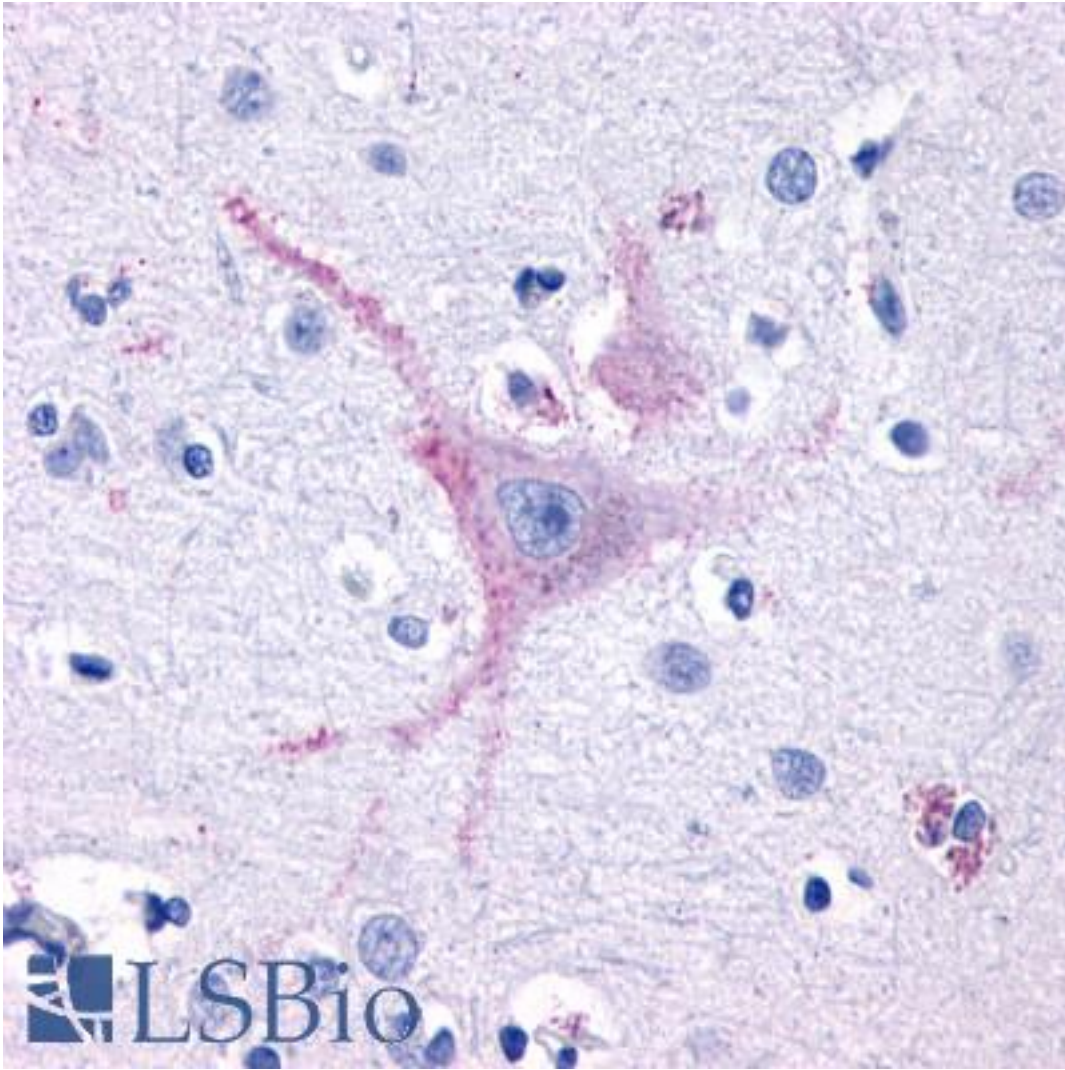


| GPR32 Rabbit anti-Human Polyclonal (Extracellular Domain) Antibody - LS-A1678 - LSBio |  |
|---|--|
| <b>CatalogID:</b>   | LS-A1678   |
| <b>Target:</b>  | G protein-coupled receptor 32 (GPR32)  |
| <b>Synonyms:</b>  | GPR32 Antibody, G protein-coupled receptor 32 Antibody, Resolvin D1 receptor Antibody, RVDR1 Antibody  |
| <b>Family / Subfamily:</b>  | GPCR / Orphan-A  |
| <b>Host</b>   | GPR32 antibody was produced in Rabbit  |
| <b>Clonality:</b>   | Polyclonal   |
| <b>Immunogen Species:</b>   | GPR32 antibody was raised against Human  |
| <b>Antigen Type:</b>  | Synthetic peptide  |
| <b>Immunogen:</b>   | GPR32 antibody was raised against synthetic 19 amino acid peptide from 2nd extracellular domain of human GPR32. Percent identity with other species by BLAST analysis: Human (100%). |
| <b>Specificity:</b>   | Human GPR32. BLAST analysis of the peptide immunogen showed no homology with other human proteins.   |
| <b>Epitope:</b>   | Extracellular Domain   |
| <b>Reactivity:</b>  | Human  |
| <b>Purification:</b>  | Immunoaffinity purified  |
| <b>Presentation:</b>  | PBS, 0.1% sodium azide.  |
| <b>Recommended Storage:</b>   | Long term: -70°C; Short term: +4°C   |
| <b>Uses:</b>  | IHC - Paraffin (11 µg/ml) (Optimal dilution to be determined by the researcher)  |
| <b>Size:</b>  | 50 µg  |
| <b>Concentration:</b>   | 1 mg/ml  |

**Immunohistochemistry Image:**



Anti-GPR32 antibody LS-A1678 IHC of human brain, cortex. Immunohistochemistry of formalin-fixed, paraffin-embedded tissue after heat-induced antigen retrieval.

**Requested From:**

Japan

Laboratory Reagent For In Vitro Research Use Only

Not for resale without prior written consent from LifeSpan BioSciences, Inc.

Created on 9/23/2014

© 2014 LifeSpan BioSciences