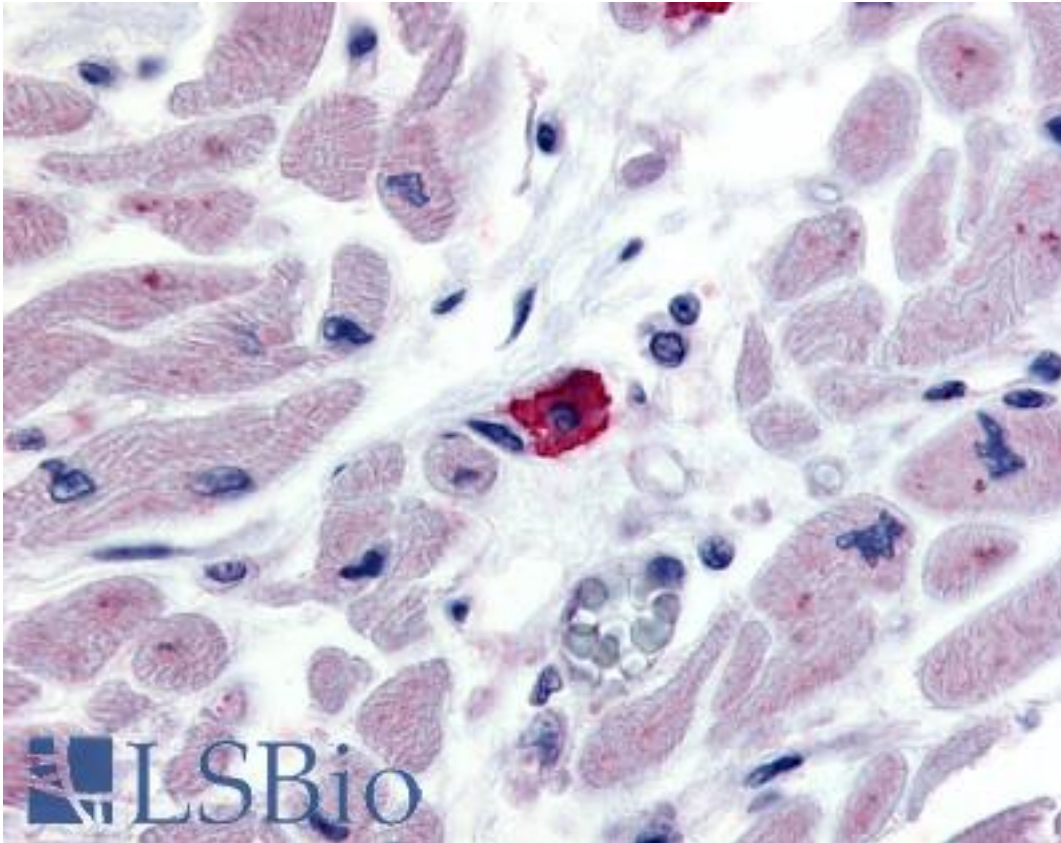


EMR3 Rabbit anti-Human Polyclonal (N-Terminus) Antibody - LS-A1666 - LSBio

CatalogID:	LS-A1666
Target:	egf-like module containing, mucin-like, hormone receptor-like 3 (EMR3)
Synonyms:	EMR3 Antibody, EGF-like module receptor 3 Antibody
Family / Subfamily:	GPCR / Orphan-B
Host	EMR3 antibody was produced in Rabbit
Clonality:	Polyclonal
Immunogen Species:	EMR3 antibody was raised against Human
Antigen Type:	Synthetic peptide
Immunogen:	EMR3 antibody was raised against synthetic 18 amino acid peptide from N-terminal extracellular domain of human EMR3. Percent identity with other species by BLAST analysis: Human (100%); Gibbon (94%); Gorilla (89%); Marmoset (83%).
Specificity:	Human EMR3. BLAST analysis of the peptide immunogen showed no homology with other human proteins.
Epitope:	N-Terminus
Reactivity:	Human
Predicted Reactivity:	Gibbon
Purification:	Immunoaffinity purified
Presentation:	PBS, 0.1% sodium azide.
Recommended Storage:	Long term: -70°C; Short term: +4°C
Uses:	IHC - Paraffin (10 µg/ml) (Optimal dilution to be determined by the researcher)
Size:	50 µg
Concentration:	1 mg/ml

Immunohistochemistry Image:



Anti-EMR3 antibody LS-A1666 IHC of human macrophage. Immunohistochemistry of formalin-fixed, paraffin-embedded tissue after heat-induced antigen retrieval.

Requested From:

Japan

Laboratory Reagent For In Vitro Research Use Only

Not for resale without prior written consent from LifeSpan BioSciences, Inc.

Created on 9/23/2014

© 2014 LifeSpan BioSciences