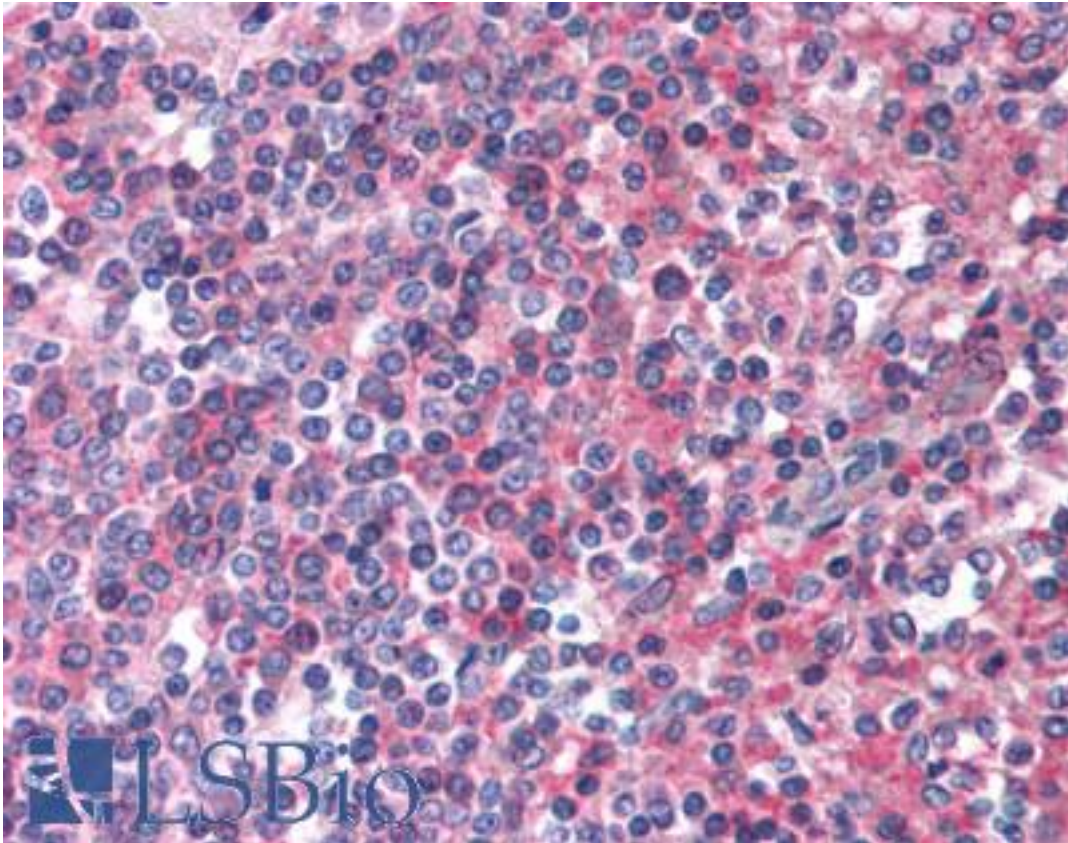


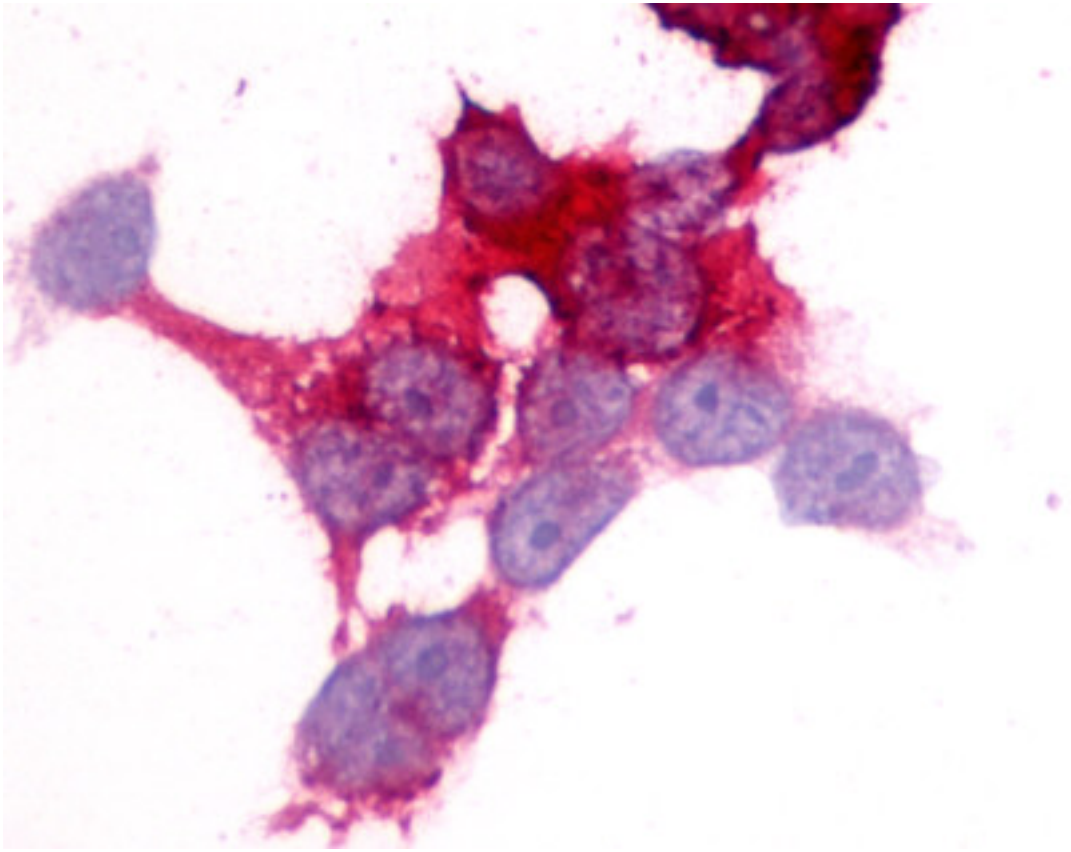
EMR2 Rabbit anti-Human Polyclonal (N-Terminus) Antibody - LS-A1663 - LSBio

CatalogID:	LS-A1663
Target:	egf-like module containing, mucin-like, hormone receptor-like 2 (EMR2)
Synonyms:	EMR2 Antibody, CD312 antigen Antibody, EGF-like module receptor 2 Antibody, CD312 Antibody
Family / Subfamily:	GPCR / Orphan-B
Host	EMR2 antibody was produced in Rabbit
Clonality:	Polyclonal
Immunogen Species:	EMR2 antibody was raised against Human
Antigen Type:	Synthetic peptide
Immunogen:	EMR2 antibody was raised against synthetic 20 amino acid peptide from N-terminal extracellular domain of human EMR2. Percent identity with other species by BLAST analysis: Human (100%); Gorilla (90%).
Specificity:	Human EMR2. BLAST analysis of the peptide immunogen showed no homology with other human proteins, except MYO18B (45%), FLJ13231 (40%).
Epitope:	N-Terminus
Reactivity:	Human
Predicted Reactivity:	Gorilla
Purification:	Immunoaffinity purified
Presentation:	PBS, 0.1% sodium azide.
Recommended Storage:	Long term: -70°C; Short term: +4°C
Uses:	IHC - Paraffin (7.5 - 15 µg/ml), ICC, ELISA (Optimal dilution to be determined by the researcher)
Size:	50 µg
Concentration:	1 mg/ml

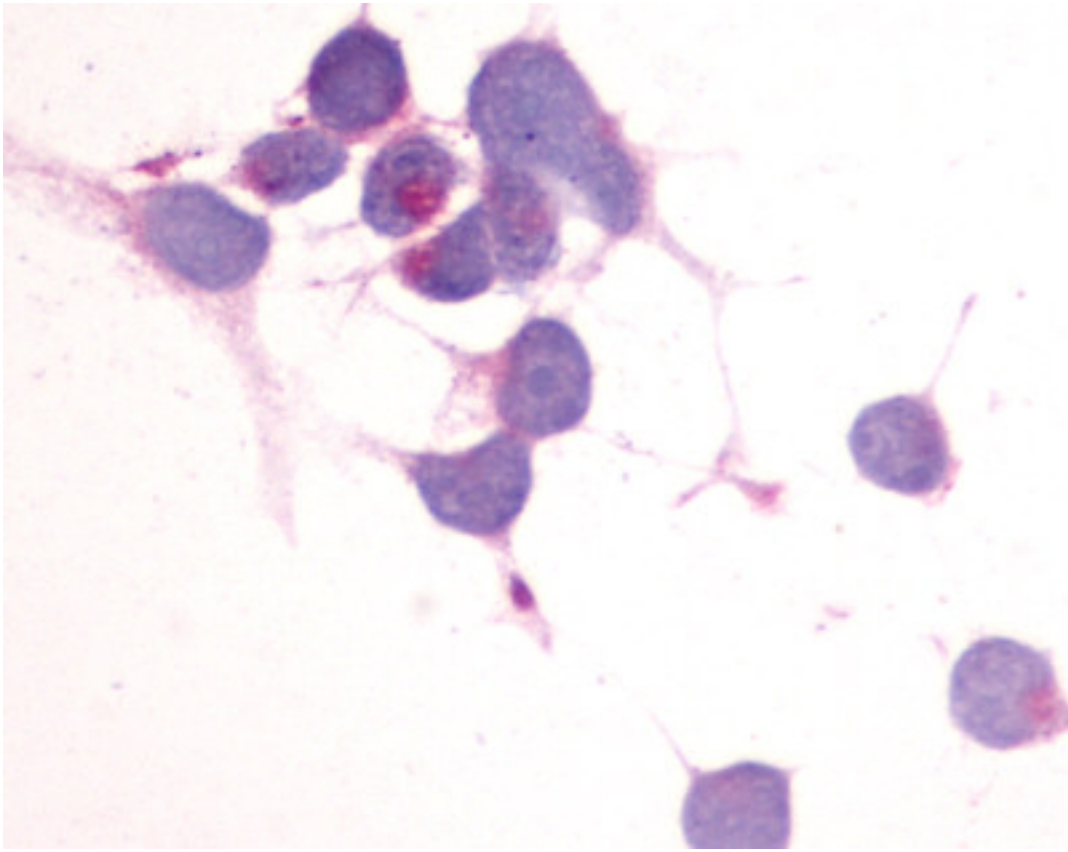
Immunohistochemistry Image:



Anti-EMR2 antibody LS-A1663 IHC of human spleen. Immunohistochemistry of formalin-fixed, paraffin-embedded tissue after heat-induced antigen retrieval.



Cells expressing vector only - immunostained with target antibody



Cells expressing vector only - immunostained with target antibody

Requested From:

Japan

Laboratory Reagent For In Vitro Research Use Only

Not for resale without prior written consent from LifeSpan BioSciences, Inc.

Created on 9/23/2014

© 2014 LifeSpan BioSciences