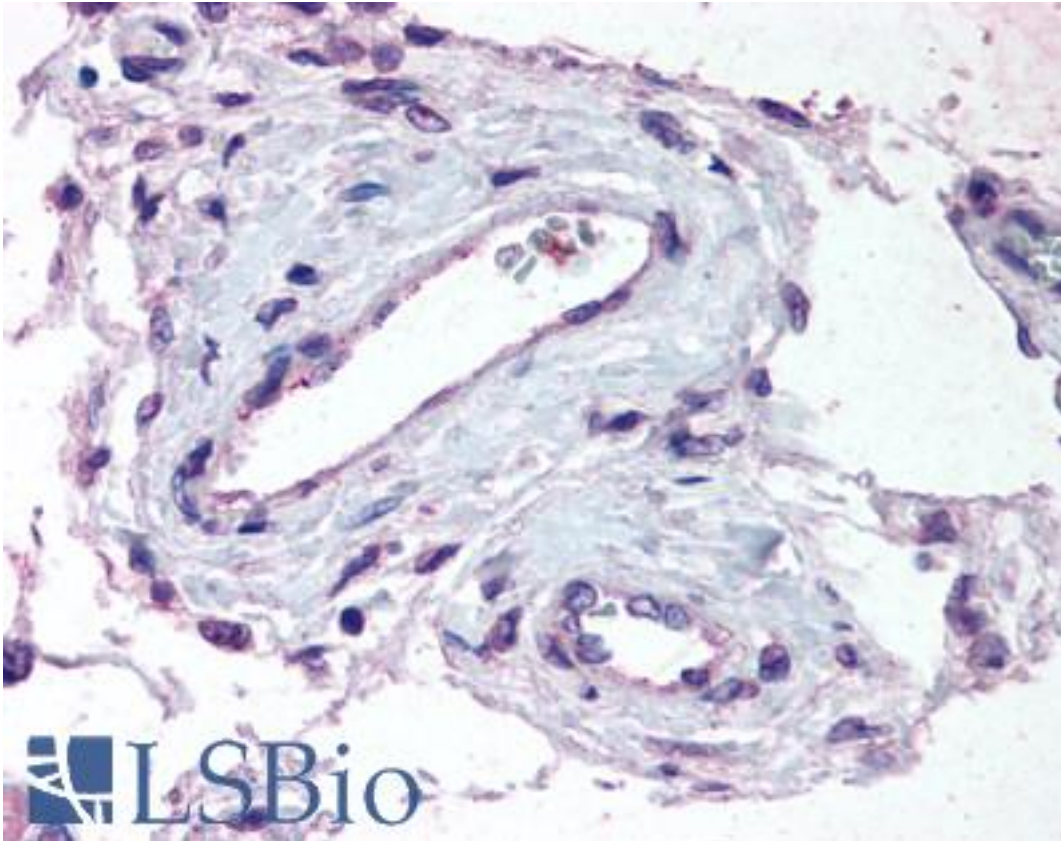


### ADAMTS1 Rabbit anti-Human Polyclonal (Internal) Antibody - LS-A1642 - LSBio

<b>CatalogID:</b>	LS-A1642
<b>Target:</b>	ADAM metallopeptidase with thrombospondin type 1 motif, 1 (ADAMTS1)
<b>Synonyms:</b>	ADAMTS1 Antibody, ADAM-TS Antibody, ADAMTS-1 Antibody, ADAM-TS 1 Antibody, C3-C5 Antibody, ADAM-TS1 Antibody, METH-1 Antibody, METH1 Antibody, KIAA1346 Antibody
<b>Family / Subfamily:</b>	Protease / Metallopeptidase M12B
<b>Host</b>	ADAMTS1 antibody was produced in Rabbit
<b>Clonality:</b>	Polyclonal
<b>Immunogen Species:</b>	ADAMTS1 antibody was raised against Human
<b>Antigen Type:</b>	Synthetic peptide
<b>Immunogen:</b>	ADAMTS1 antibody was raised against synthetic 18 amino acid peptide from internal region of human ADAMTS1. Percent identity with other species by BLAST analysis: Human, Gorilla, Orangutan, Gibbon, Monkey, Marmoset, Rabbit, Horse, Pig (100%); Bat, Bovine, Panda, Xenopus (94%); Mouse, Dog, Hamster, Elephant, Opossum (89%); Rat, Sheep, Turkey, Chicken (83%).
<b>Specificity:</b>	Human ADAMTS1. BLAST analysis of the peptide immunogen showed no homology with other human proteins, except ADAMTS8 (61%).
<b>Epitope:</b>	Internal
<b>Reactivity:</b>	Human, Gorilla, Orangutan, Gibbon, Monkey, Horse, Pig, Rabbit
<b>Predicted Reactivity:</b>	Bat, Bovine, Xenopus
<b>Purification:</b>	Immunoaffinity purified
<b>Presentation:</b>	PBS, 0.1% sodium azide.
<b>Recommended Storage:</b>	Store at 4°C for short term applications. For long term storage, aliquot and store at -20°C.
<b>Usage Summary:</b>	Immunohistochemistry: LS-A1642 was validated for use in immunohistochemistry on a panel of 21 formalin-fixed, paraffin-embedded (FFPE) human tissues after heat induced antigen retrieval in pH 6.0 citrate buffer. After incubation with the primary antibody, slides were incubated with biotinylated secondary antibody, followed by alkaline phosphatase-streptavidin and chromogen. The stained slides were evaluated by a pathologist to confirm staining specificity. The optimal working concentration for LS-A1642 was determined to be 1.3 µg/ml.
<b>Uses:</b>	IHC - Paraffin (1.3 µg/ml) (Optimal dilution to be determined by the researcher)
<b>Size:</b>	50 µg
<b>Concentration:</b>	1 mg/ml

**Immunohistochemistry Image:**



Anti-ADAMTS1 antibody LS-A1642 IHC of human testis, vessels. Immunohistochemistry of formalin-fixed, paraffin-embedded tissue after heat-induced antigen retrieval.

**Requested From:**

Japan

Laboratory Reagent For In Vitro Research Use Only

Not for resale without prior written consent from LifeSpan BioSciences, Inc.

Created on 9/23/2014

© 2014 LifeSpan BioSciences