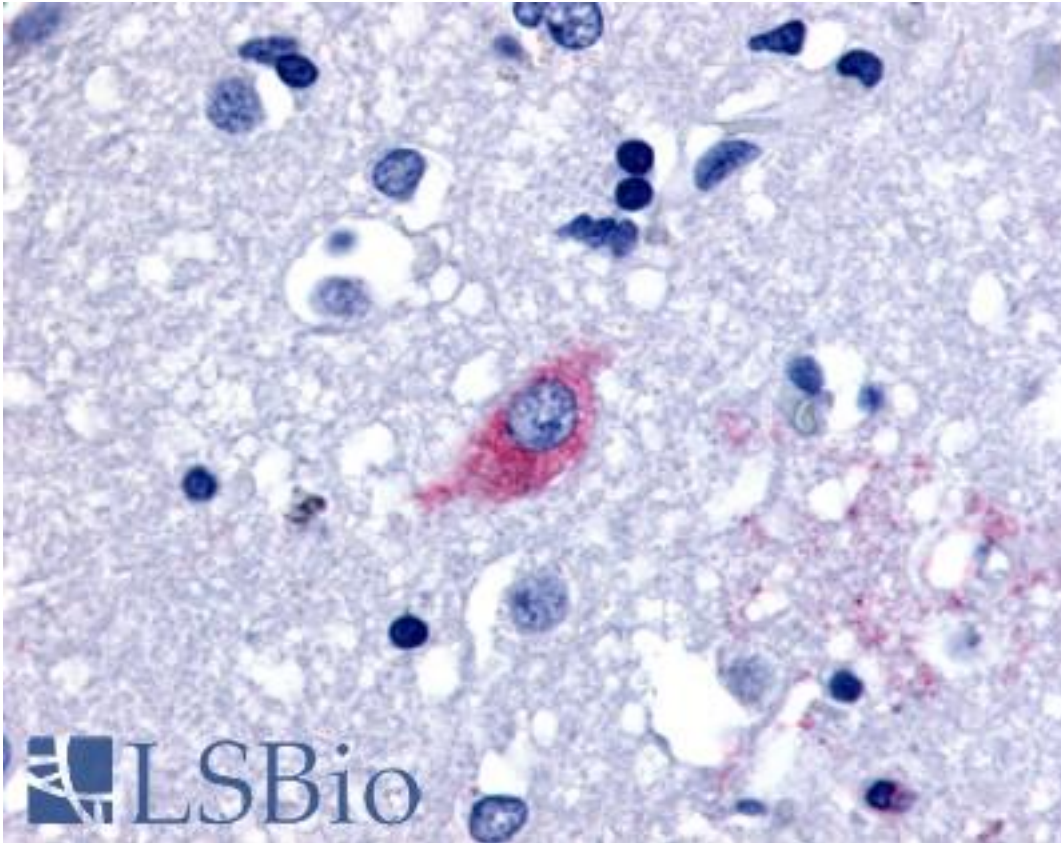


GPR48 / LGR4 Rabbit anti-Human Polyclonal (Cytoplasmic Domain) Antibody - LS-A1633 - LSBio	
<b>CatalogID:</b>	LS-A1633
<b>Target:</b>	leucine-rich repeat containing G protein-coupled receptor 4 (LGR4)
<b>Synonyms:</b>	LGR4 Antibody, G-protein coupled receptor 48 Antibody, G protein-coupled receptor 48 Antibody, GPR48 Antibody
<b>Family / Subfamily:</b>	GPCR / Orphan-A
<b>Host</b>	LGR4 antibody was produced in Rabbit
<b>Clonality:</b>	Polyclonal
<b>Immunogen Species:</b>	GPR48 / LGR4 antibody was raised against Human
<b>Antigen Type:</b>	Synthetic peptide
<b>Immunogen:</b>	GPR48 / LGR4 antibody was raised against synthetic 19 amino acid peptide from 2nd cytoplasmic domain of human LGR4. Percent identity with other species by BLAST analysis: Human, Gorilla, Orangutan, Panda (100%); Monkey, Rabbit, Pig (95%); Gibbon, Dog, Bovine (89%); Marmoset, Bat (84%).
<b>Specificity:</b>	Human LGR4. BLAST analysis of the peptide immunogen showed no homology with other human proteins.
<b>Epitope:</b>	Cytoplasmic Domain
<b>Reactivity:</b>	Human, Gorilla, Orangutan
<b>Predicted Reactivity:</b>	Monkey, Pig, Rabbit
<b>Purification:</b>	Immunoaffinity purified
<b>Presentation:</b>	PBS, 0.1% sodium azide.
<b>Recommended Storage:</b>	Long term: -70°C; Short term: +4°C
<b>Uses:</b>	IHC - Paraffin (4 - 10 µg/ml) (Optimal dilution to be determined by the researcher)
<b>Size:</b>	50 µg
<b>Concentration:</b>	1 mg/ml

**Immunohistochemistry Image:**



Anti-LGR4 antibody LS-A1633 IHC of human brain, neurons and glia. Immunohistochemistry of formalin-fixed, paraffin-embedded tissue after heat-induced antigen retrieval.

**Requested From:**

Japan

Laboratory Reagent For In Vitro Research Use Only

Not for resale without prior written consent from LifeSpan BioSciences, Inc.

Created on 9/23/2014

© 2014 LifeSpan BioSciences